



gvSIG Mobile



gvSIG Mobile is a Geographic Information System (GIS) aimed at mobile devices, ideal for projects that capture and update data in the field. It's known for having a user-friendly interface, being able to access the most common formats and a wide range of GIS and GPS tools which are ideal for working with geographic information.

So far, gvSIG Mobile is a **Geographic Information System**, as well as a **Spatial Data Infrastructures client for mobile devices**.

Features: Access to vector (SHP, GML, KML, GPX) and raster formats (ECW, JPEG, PNG, GIF); Access to remote services (OGC WMS); Display; Query; Selection; Search; GPS; Graphic and Alphanumeric editing; Vector representation; Tables; Data portability and data integration with gvSIG Desktop.

Main characteristics

- Development language: **Java**
- Available for platforms supporting Java ME (J2ME - CDC): Windows Mobile 5.0 and 6.0
- OGC Standards
- Free license (GNU/GPL).
- Modular, scalable, powerful.
- Simple interface: **user friendly**.
- Available in more than 10 languages.



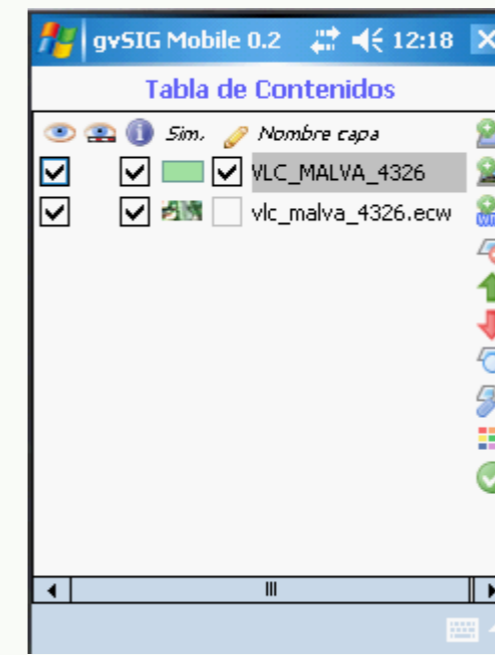
Navigation



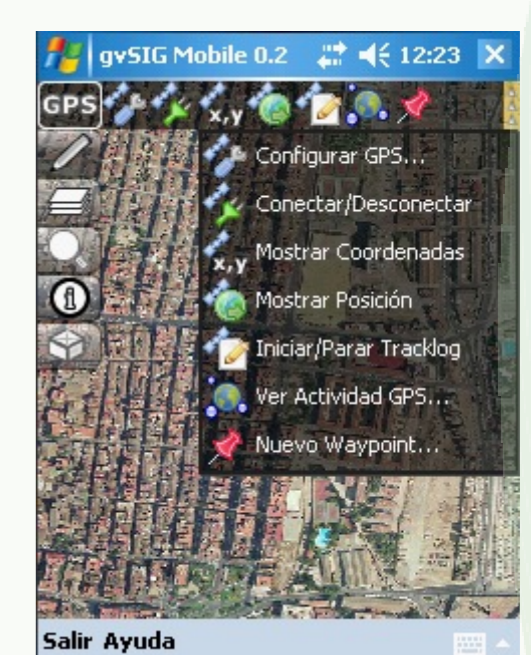
Query Data



Add Data



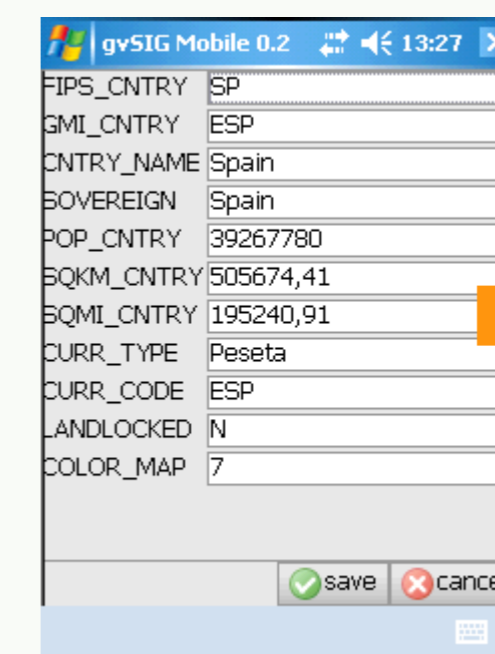
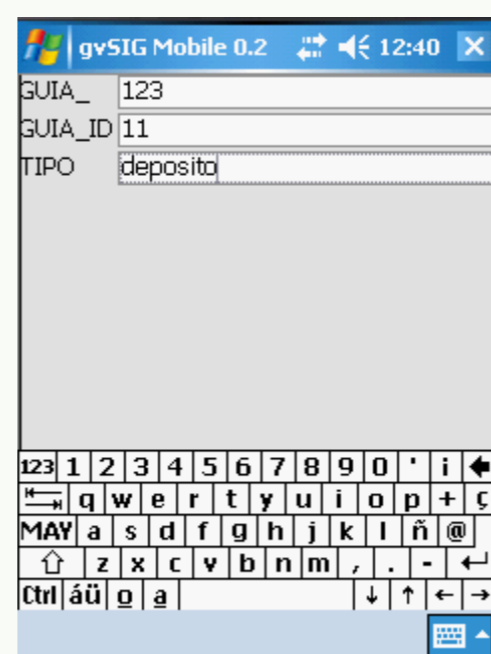
Layer management



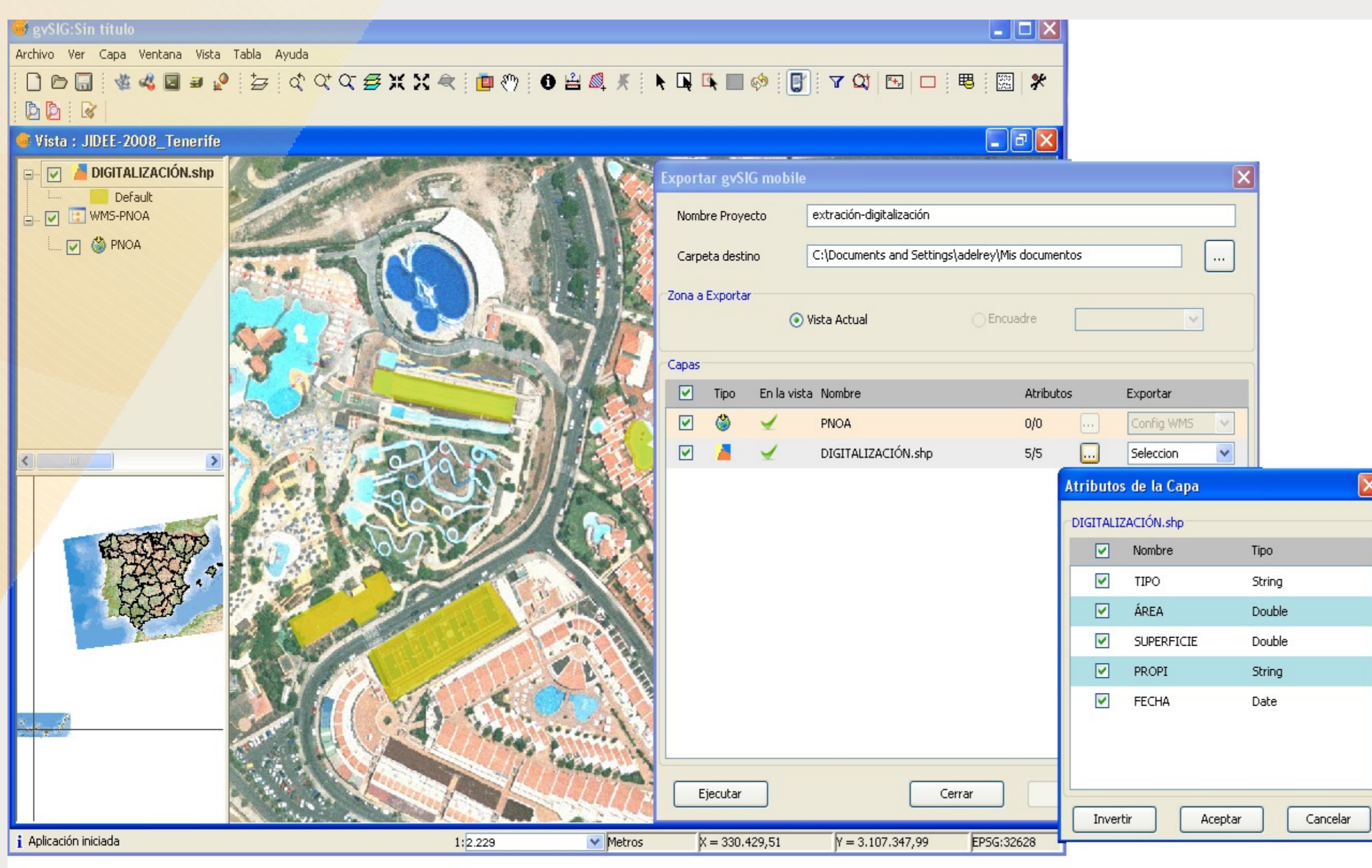
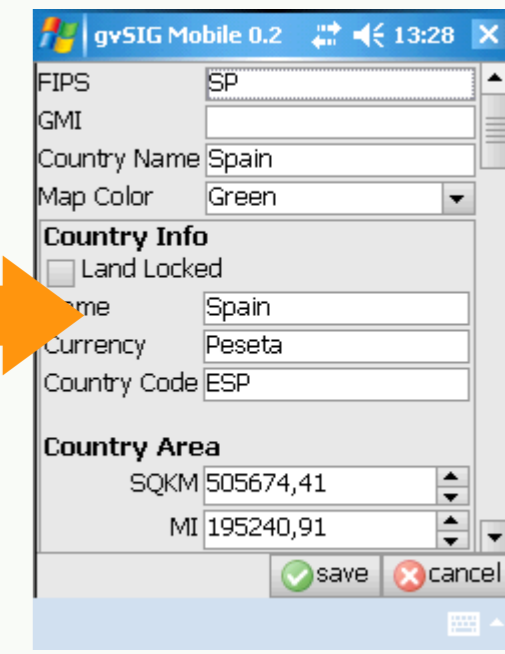
GPS Support



Editing of data



Use of custom forms



Data integration: gvSIG extension to export data to the PDA



GML, KML and GPX formats support

Range value thematics maps

gvSIG Mobile 1.0

- OGC Services: **WFS**
- Thematic symbology: **range and unique values**
- Labelling
- Advanced editing of **vector data**
- Table **structure modifications**
- Advanced GPS Location
- LandMarkStores **Management**
- OSGi **extensibility**