



The role of free software thick clients in SDI: Case of gvSIG

Michael Gould, *Carlos Granell, Miguel Angel Esbrí -- Univ Jaume I, Castellón, Spain*
Gabriel Carrión -- Generalitat Valenciana



www.gvsig.gva.es



Take-home messages

- Thick clients link GIS and SDI communities
- Development following free software methodology increases user community participation
- Experiment building SDI from user base, rather than top-down from data provider
- gvSIG version 1.0(alpha) available: try it!





Thin versus thick clients

THIN

- + Only web browser needed
- Sometimes OS issues
- Limited functionality
- + Normally simple to use
- + Access to web services
- Dependence on web services (QoS)

THICK

- Need to download/install software
- + Greater functionality: GIS and SDI access (local+remote data)
- Learning curve
- + Access to, but less dependence on services
- + Community has wider interest in development



GENERALITAT
VALENCIANA

www.gvsig.gva.es

gvSIG - Mozilla Firefox

Archivo Editar Ver Ir Marcadores Herramientas Ayuda

http://www.gvsig.gva.es/index.php?id=gvsig&L=2

Comenzar con Firefox Últimas noticias

Conselleria d'Infraestructures i Transport

Sunday, 18 de June de 2006

Castellano Valencià Search

Correo Contact Us Web map

gvSIG

- Greetings from the Conseller
- What is gvSIG?
- Get to know the project
- Downloads
- Documentation
- Contact area
- FAQs
- Newsletter
- Interesting Links
- Glossary
- gvPONTIS: Migration to open software project

Highlights

Greetings from the Conseller
Welcome to the brand Conselleria d'Infraestructures i Transport web page...

SERVICES

- Articles and reports
- Collaborators
- Download gvSIG
- I gvSIG conferences
- Manuals
- Version notes
- Previous requirements

Visits:
0470462
(since 3/8/2004)

News

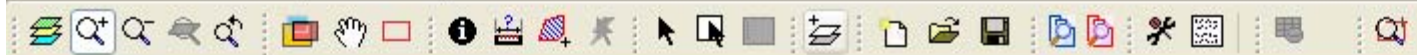
Tuesday, 30 May 2006
New 1-0-alpha release now available
Edition, Geoprocessing and Georeferencing arrive at gvSIG. The gvSIG project publishes an "alpha" re...
[more information](#)

OCULAR

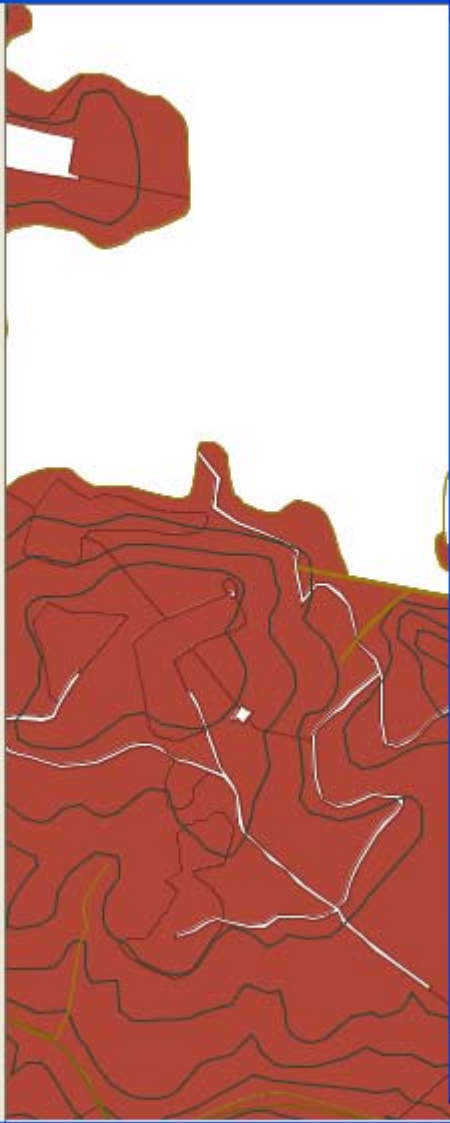
OGC™ OPEN GEOSPATIAL CONSORTIUM

CEMIDALITAT VALENCIANA

Terminado



- 61614lim_admin.shp
- Default
- 61614hidrog_pun.shp
- 61614hidrog_lin.shp
- 61614curvas_nivel.shp
- 61614cultivos.shp



Añadir capa

Fichero JDBC WMS WCS

Información Capas Estilos Dimensiones Formatos

Información del servicio

Servidor	http://orto.cth.gva.es/wmsconnector/com.esri.wms.Esrimap/wms_patricova
Tipo de servidor	WMS 1.1.1
Título	-
Sumario	Conselleria de Territori i Habitatge, GVA - Servici WMS: wms_patricova

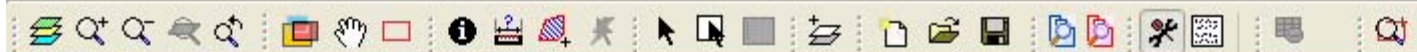
Propiedades

Formato	Ninguno seleccionado
SRS	Ninguno seleccionado

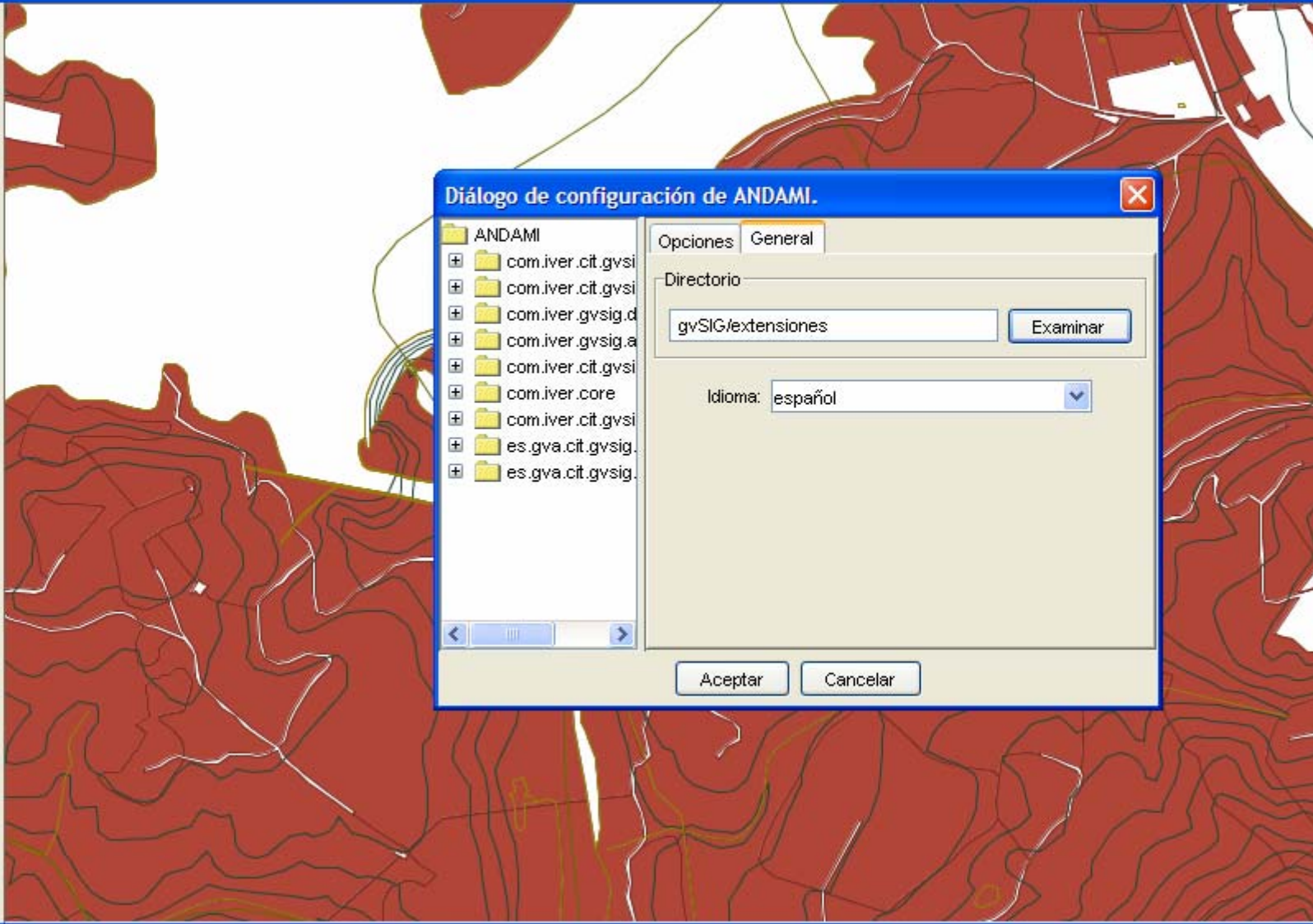
Tipo de servidor: **WMS 1.1.1**

Anterior **Siguiente**

Aceptar Cancelar



- 61614lim_admin.shp
 - Default
- 61614hidrog_pun.sh
- 61614hidrog_lin.shp
- 61614curvas_nivel.s
- 61614cultivos.shp



Diálogo de configuración de ANDAMI.

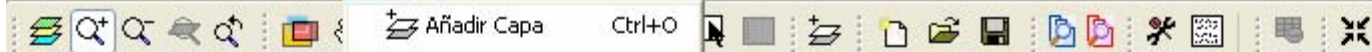
Opciones General

Directorio

gvSIG/extensiones Examinar

Idioma: español

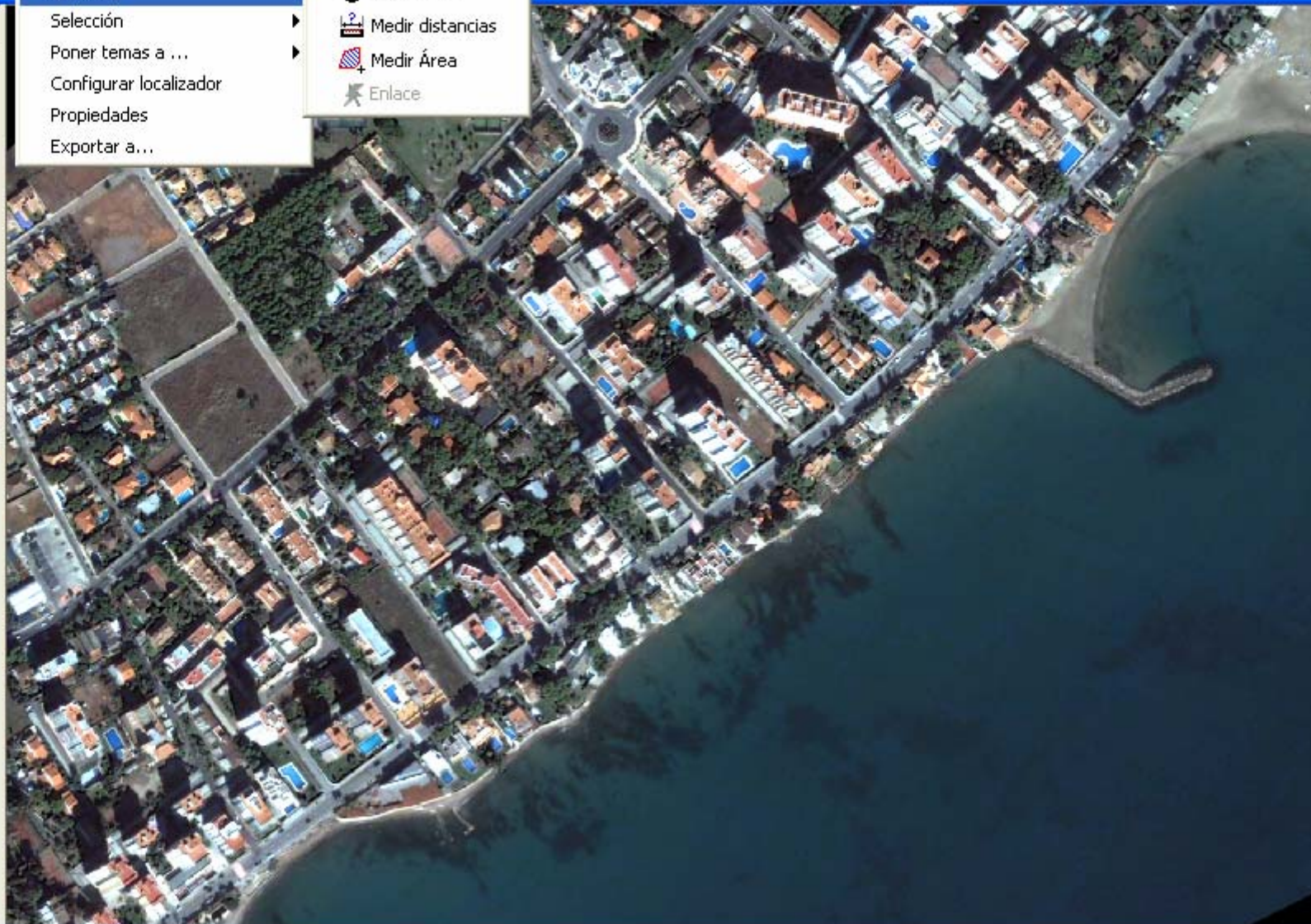
Aceptar Cancelar



- qb_h61666.tif
- capaWMS

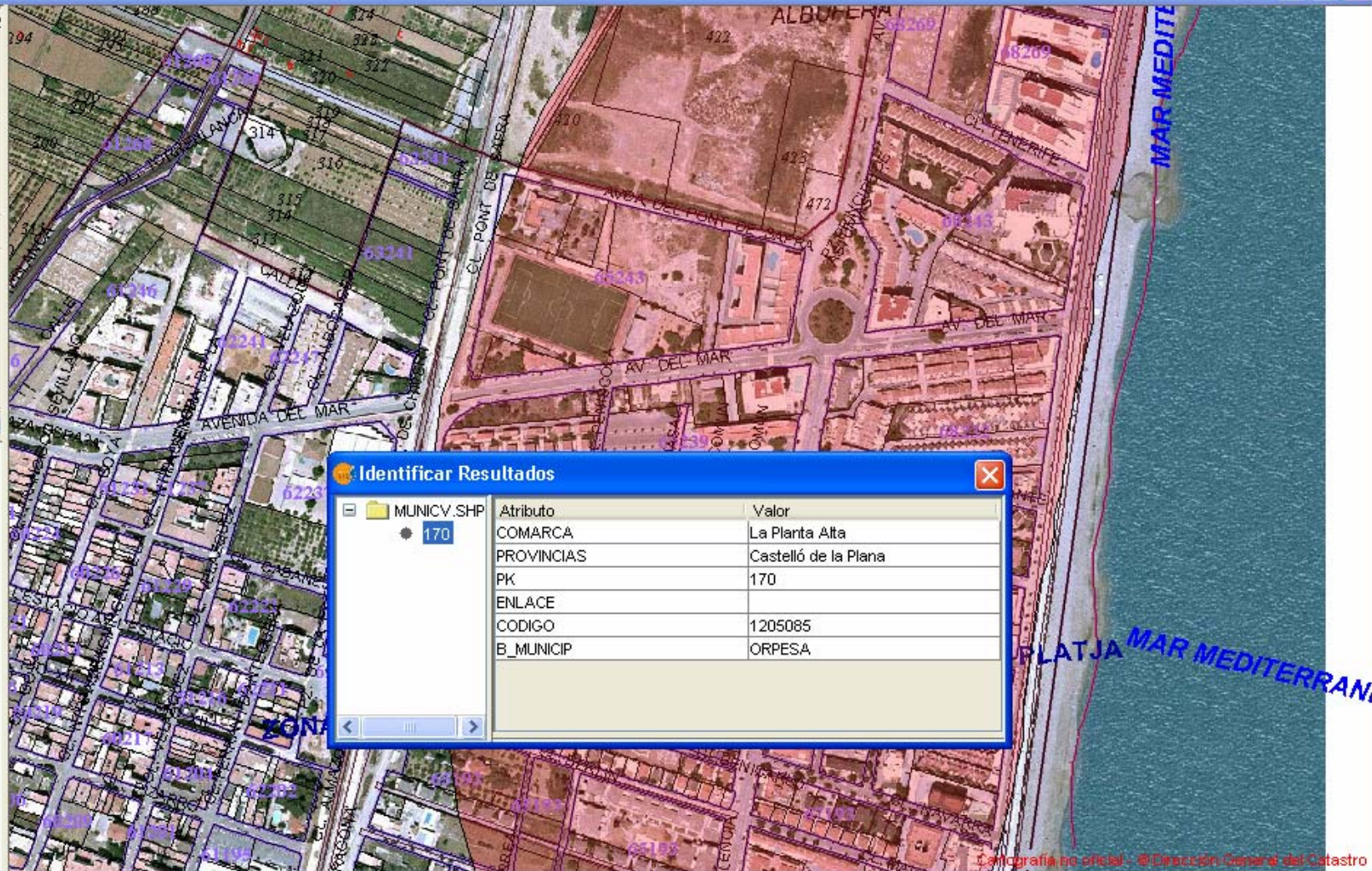
- Añadir Capa Ctrl+O
- Navegación
- Consulta
- Selección
- Poner temas a ...
- Configurar localizador
- Propiedades
- Exportar a...

- Información
- Medir distancias
- Medir Área
- Enlace





- riesgo_inundacion_2
 - Default
- Catastro
- comunicaciones.shp
- o5-61684.ecw
- o5-61683.ecw
- MUNICV.SHP**



Identificar Resultados

Atributo	Valor
COMARCA	La Planta Alta
PROVINCIAS	Castelló de la Plana
PK	170
ENLACE	
CODIGO	1205085
B_MUNICIP	ORPESA



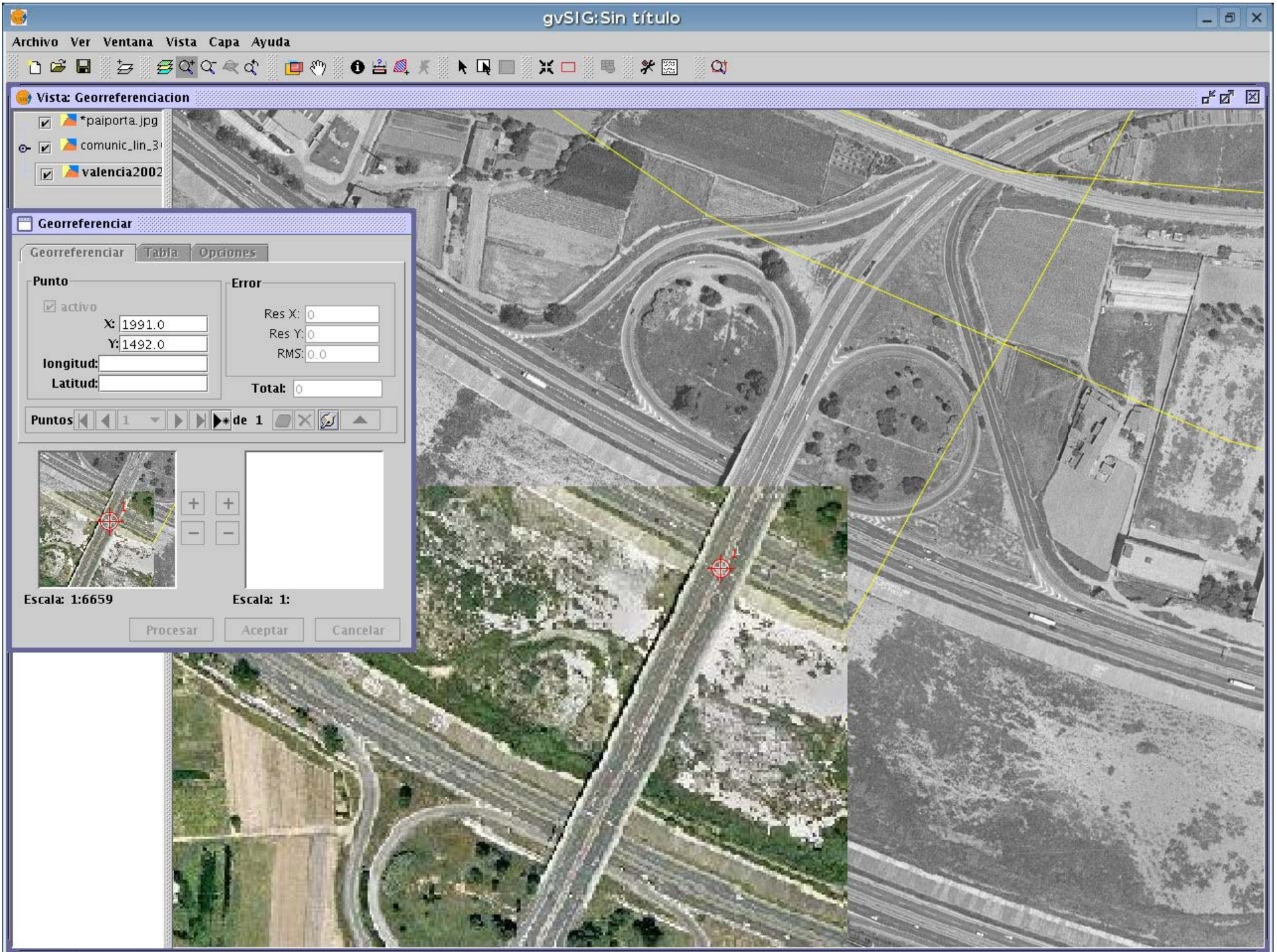
New functionality, ver 1.0 alpha

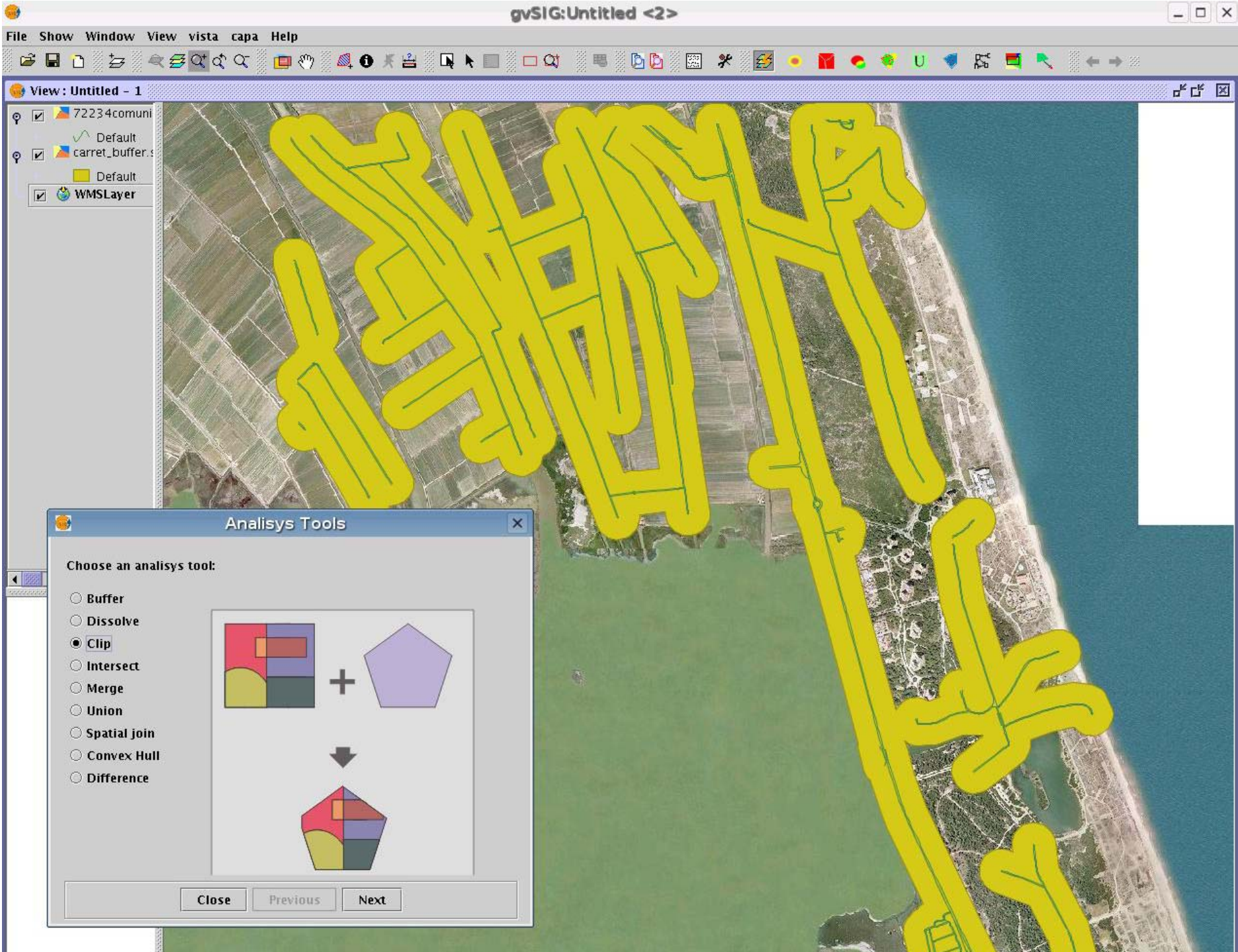
- CAD (editing) functionality; create shp, postgis, DXF layers
- Geoprocessing: dissolve, join, merge, clip,...
- Imagery: georeferencing, transparency,...
- WMS Context file support
- WFS access added!
- Improved catalogue and gazetteer access

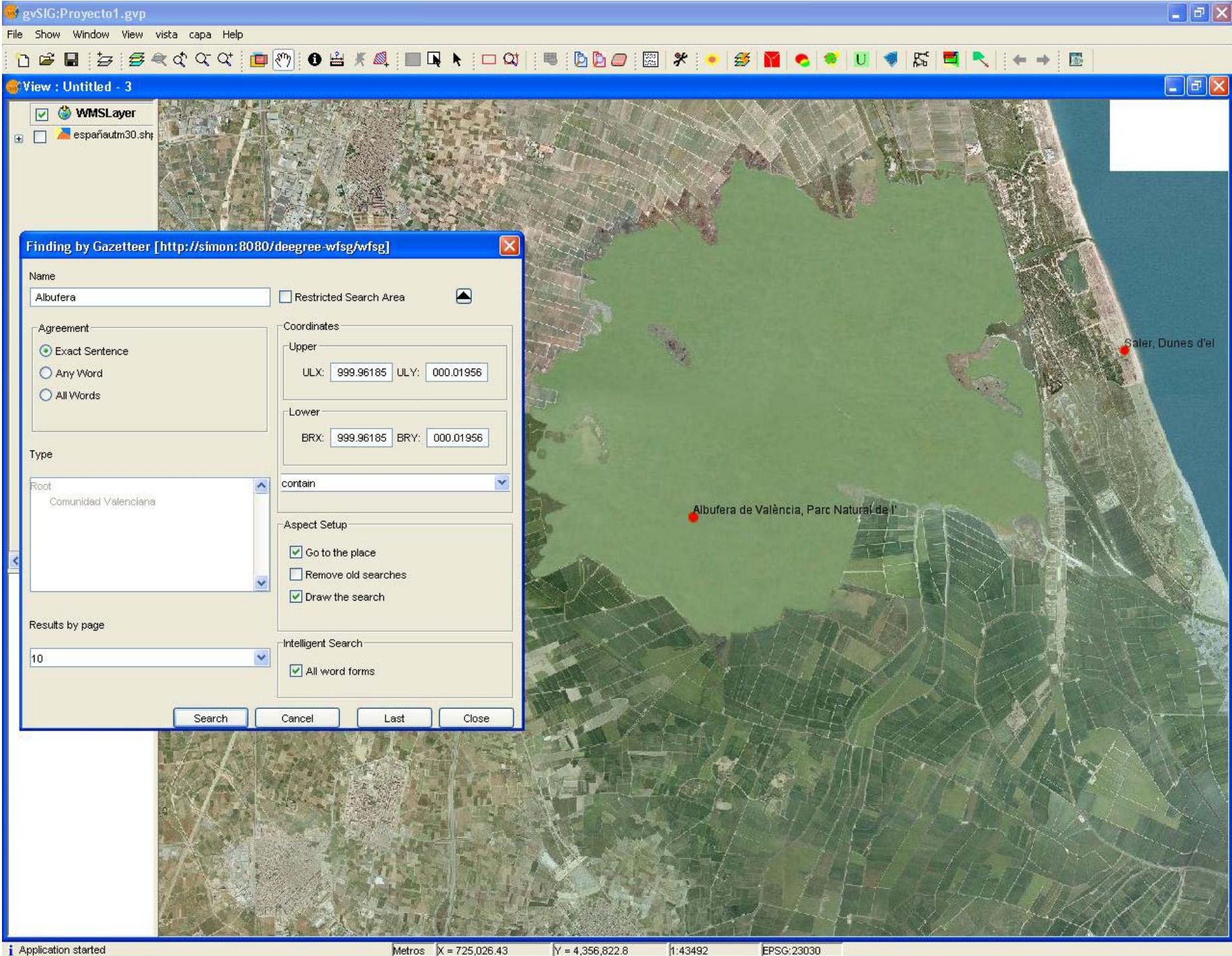


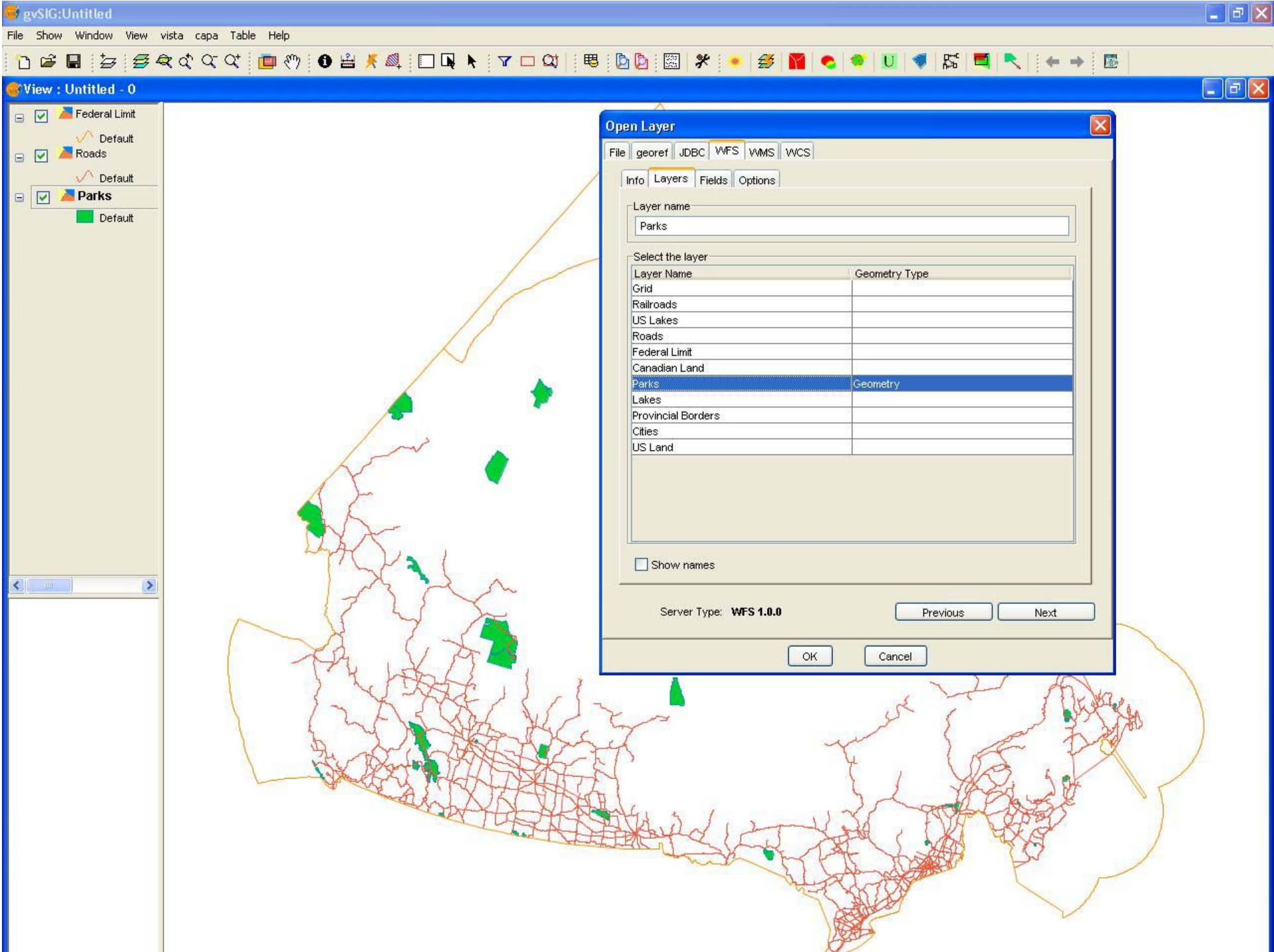
GENERALITAT
VALENCIANA

www.gvsig.gva.es









gvSIG:Untitled <2>

File Show Window View vista capa Table Help

View: Untitled - 1

- santuarios
- 72234comuni
- carret_buffer...
- WMSLayer

Geodata Search [mapas.euitto.upm.es:2100]

Title: santuario Restricted Search Area

Agreement:
 Exact Sentence
 Any Word
 All Words

Coordinates:
Upper: ULX: -9.44013 ULY: 44.17032
Lower: BRX: 10.21555 BRY: 8.25602

Abstract:

KeyWords:

Category: any

Scale: any

Provider:

contain

Last Update:
From:
To:

Search Cancel Last Close

Search Results

Last Results: 1 of 749 Next

[Santuario Romano Católico:Santuario-Iglesia Cristo de Candás de Candás: Asturias: ASTURIAS: \(España\)](#)

Abstract: Cristo de Candás Aparecido en: 1530. Con arquitectura: La imagen fue colocada en una ermita dedicada al apóstol Santiago, pero un siglo mas tarde pasó a la citada iglesia parroquial y fue instalada en un camerino construido a tales efectos entre 1660 y 1670. Se accede al mismo por una moderna escalera de mármol, además de las dos antiguas de caracol construidas en el primer tercio del siglo XVIII, época a la que también pertenece el retablo barroco en que está entronizada la imagen.. Con imágenes: La imagen, réplica de la primitiva que fue destruida en la guerra civil de 1936, es obra moderna..

NO PICTURE

Descript... Add Lay... Close



Multilingual

gvSIG 0.6 - Downloading the program - Mozilla Firefox

Archivo Editar Ver Ir Marcadores Herramientas Ayuda

http://www.gvsig.gva.es/index.php?id=1321&L=2

Comenzar con Firefox Últimas noticias

DOWNLOADING THE PROGRAM

Executable files		
Update	Binaries	Note
0.6.1 (16-05-2006)	ZIP (5.5 MB)	Requires gvSIG 0.6 already installed in the system
Stable version		
Binaries		Manual
0.6 (29-03-2006)	ZIP (28.8 MB) TAR.GZ (28.2 MB)	PDF (2.2 MB) PDF (2.1MB)
Unstables versions		
Binaries		New feature's guide
0.6 rc2 (28-02-2006)	ZIP (32 MB) TAR.GZ (31.5 MB)	PDF (2.2 MB)
0.6 rc1 (14-02-2006)	ZIP (32.5 MB) TAR.GZ (32 MB)	
Source		
Version	Code	Doc. of the development
0.6 (29-03-2006)	gvSIG-0_6-src.zip (32.2 MB) gvSIG-0_6-jni-src.zip (13.1 MB)	
Unstables versions		
Code		Doc. of the development
0.6 rc2 (28-02-2006)	gvSIG-0_6-rc2-src.zip (37 MB)	
0.6 rc1 (14-02-2006)	gvSIG-0_6-rc1-src.zip (39 MB)	

Terminado



User needs

- Infrastructure and Transport agency conducted study of 200+ users
- Most needed about 20% of current proprietary GIS/CAD functionality
 - At same time, huge annual licensing costs, little control over software releases and functionality
 - Experiment: move to user-defined FOSS solutions





Migration to FOSS

- Part of wider migration project, including operating systems, office automation, databases, GIS+CAD
- 2004: 100 users of proprietary GIS+CAD
- 2006: 200 users gvSIG
 - Phase 1: basic GIS functionality
 - Phase 2: basic CAD
 - Unexpected benefit: GIS→SDI client
 - SDI unknown concept initially!





gvSIG project

- 2004 public tender (working prototypes C++ and Java!) International standards-based.
- Local SME (Iver) won contract, for main development
- Contracting agency (CIT), Univ Jaume I, participants in design and execution
- Since then many other contributors, contracted and voluntary (including 5+ countries outside Spain)



www.gvsig.gva.es



gvSIG project (2)

- gvSIG community created
- Bottom-up participation of users, asking for improvements and also making improvements themselves
- On-line forums, lists (Spanish and international)
- 1st user's meeting: 250+ attendees
- 2nd (Nov 2006): 500 expected

you are invited!



www.gvsig.gva.es



About FOSS

- Not a magic bullet!
- Free <> without cost
- Very interesting economic implications
 - Local developers (recycling investment)
 - Global contributors (onion layers model)
 - Small businesses involved
 - Learn by doing: more and more developers, not only users





FOSS process → SDI

- SDI = sharing, collaborating
- FOSS process = sharing, collaborating
- SDI = local to global
- FOSS process = local to global
- Users involved in planning and developing their own solutions
- Bottom-up SDI



GENERALITAT
VALENCIANA

www.gvsig.gva.es



SDI: highways *and* cars

- gvSIG an interesting “car” design project
 - Users directly involved
 - Thick client provides best of both worlds: local processing and access to (web) services
- Growing presence of cars and drivers, stimulates sharing of more and more reference geodata





Take-home messages

- Thick clients link GIS and SDI communities
- Development following free software methodology increases user community participation
- Experiment building SDI from user base, rather than top-down from data provider
- gvSIG version 1.0(alpha) available: try it!





THANK YOU FOR YOUR ATTENTION

- Try gvSIG: www.gvsig.gva.es
- Personal contacts:
 - Gabriel Carrión, Generalitat (father) carrion_gab@gva.es
 - M Gould, Univ Jaume I (uncle) gould@uji.es



www.gvsig.gva.es