



Standards in action

Salvador Bayarri

IVER. Spain

Mike Gould

University Jaume I. Spain

Gabriel Carrión Rico

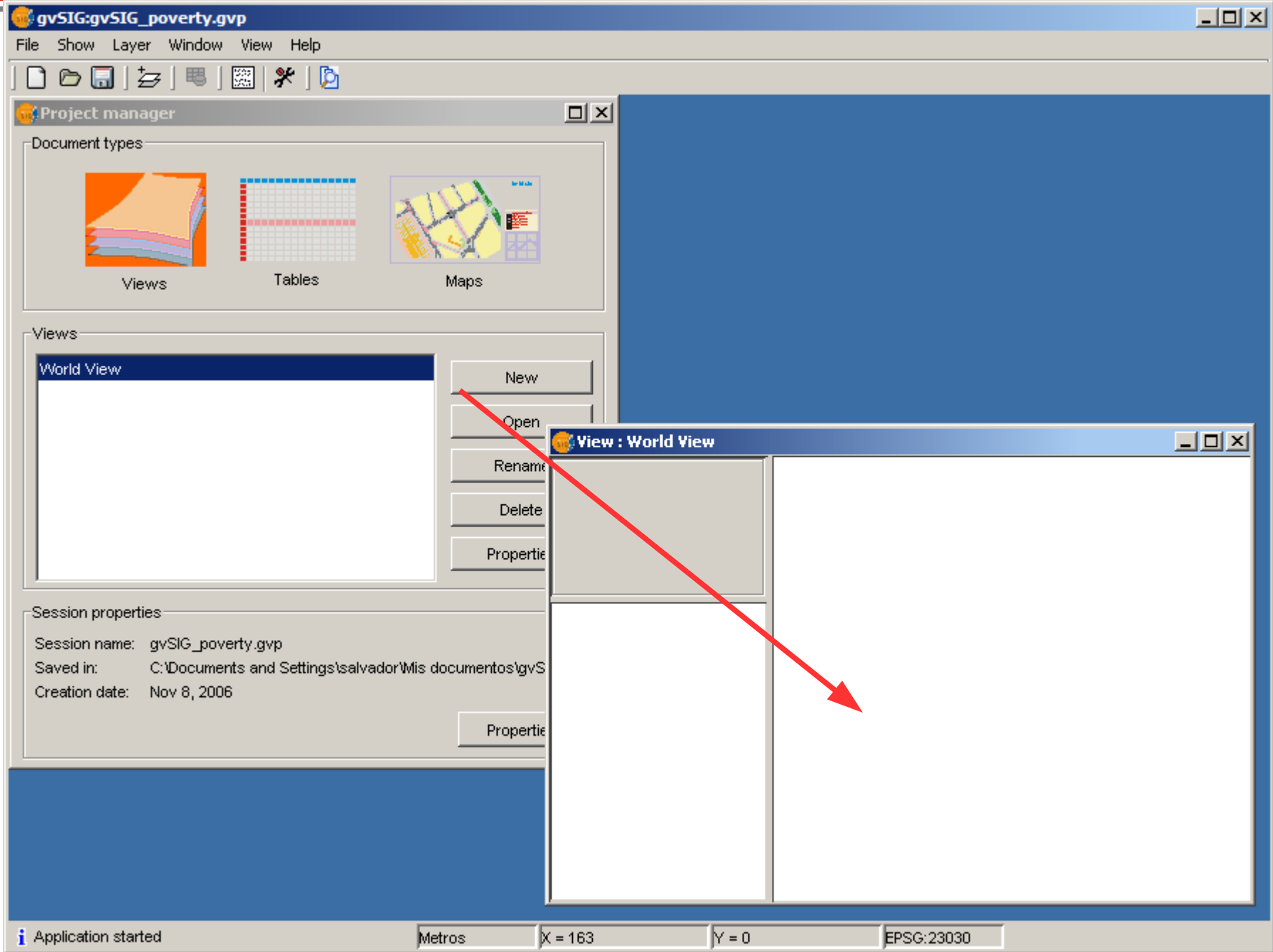
CIT. Generalitat Valenciana. Spain

Exercise in action against poverty

- Evaluate needs to improve situation in critical indicators
- Analysis to prepare proposal of action
- Determine suitable geographical locations
- Presentation of results (map)

Evaluation of critical indicators (1)

- Create gvSIG View



Evaluation of critical indicators (2)

- Search FAO GeoNetwork Catalog for World Food Program report data on poverty and hunger

Geodata Search - Connection

Fill the catalog server address
193.43.36.137:2100

Database name

Server Answer

Version:

Protocols
 Z39.50
 SRU/SRW
 CS-W

Connect Search

Geodata search [193.43.36.137:2100]

Service
Data

Title
WFP Poverty

Restrict search area

Agreement
 Exact sentence
 Any word
 Every word

Abstract

KeyWords

Category
Any

Scale
any

Provider

Coordinates
Upper
ULX: ULY:

Lower
BRX: BRY:

contain

Last update
From
To

Search Cancel Last Close

Search results

Last Results: 1 of 2 Next

[Poverty and Hunger Index \(PHI\) in WFP countries](#)

Abstract: WFP, Food for Education and its diverse set of food based interventions play a particular role in increasing school enrolment and attendance while decreasing gender disparity and drop out rates. The Global Atlas tool is an outcome of a joint initiative between the units of VAM and School Feeding which tries to improve the targeting process and help identify areas where Food for Education can be most effective. Part of this tool are a multi-thematic geo-referenced database and maps. The map shows the poverty and hunger index (PHI) in countries where WFP operates. The PHI is a composite indicator that measures countries' average achievements in reducing poverty and hunger

NO PICTURE

Description Add Layer Close

Metadata Tree

- Metadata
 - mdFileID 5609fdd0-e0ec-11da-83cc-0
 - mdLang
 - languageCode
 - mdChar
 - CharSetCd
 - mdContact
 - rpIndName Tobias Flaemig
 - rpOrgName WFP - VAM
 - rpPosName Programme Officer
 - rpCntInfo
 - cntPhone
 - voiceNum (+39) 066 513 2292
 - faxNum (+39) 066 513 2817
 - cntAddress
 - delPoint Via C. G. Viola 68
 - city Rome
 - adminArea Parco De' Medici
 - postCode 00148
 - country Italy
 - eMailAdd vamsie@wfp.org
 - eMailAdd tobias.flaemig@wfp.org
 - eMailAdd paola.desalvo@wfp.org
 - role
 - RoleCd
 - mdDateSt 2006-05-23T16:54:06
 - mdStanName ISO 19115
 - mdStanVer FDIS
 - distInfo
 - distTypeCn

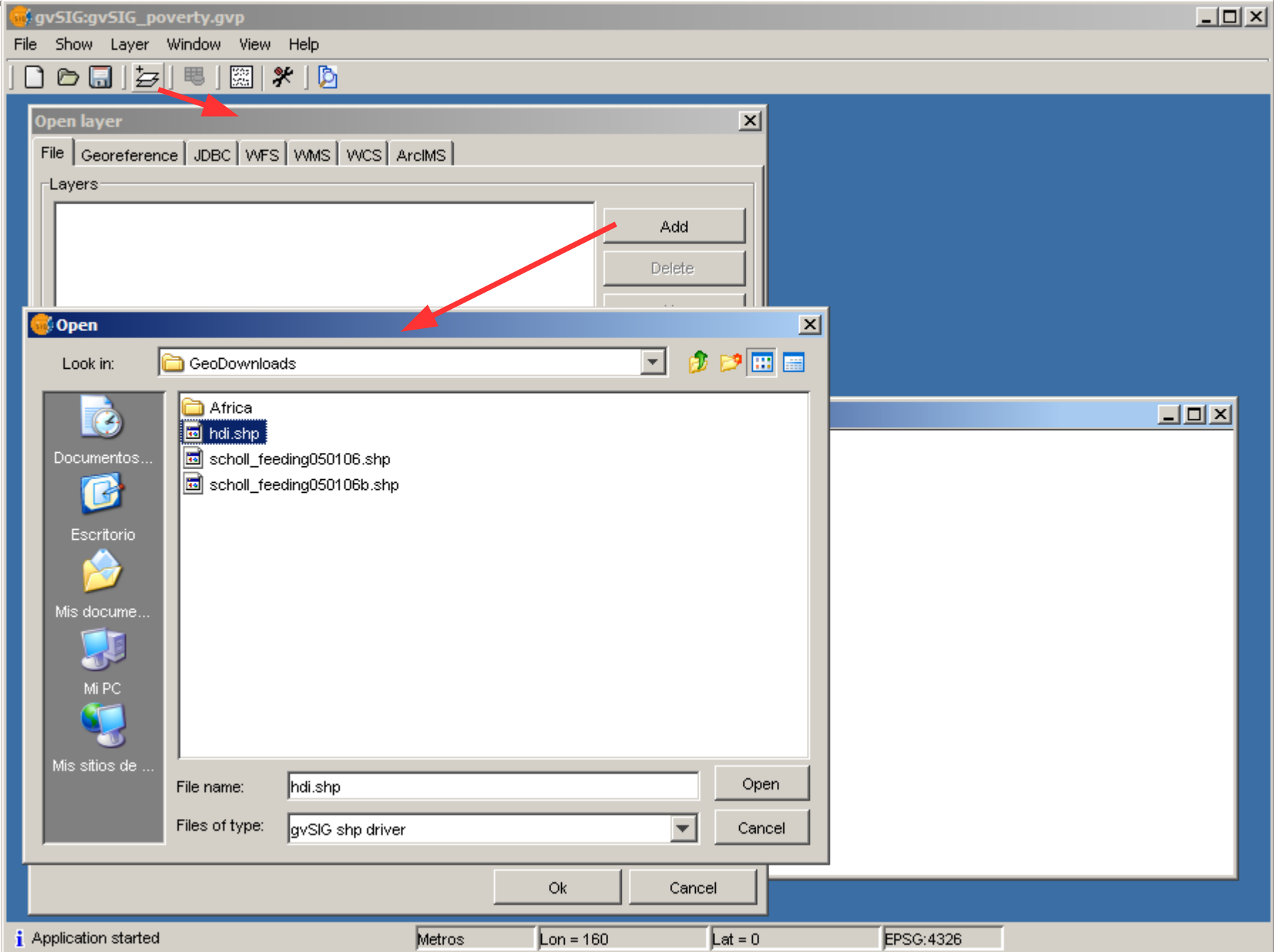
Available Resources

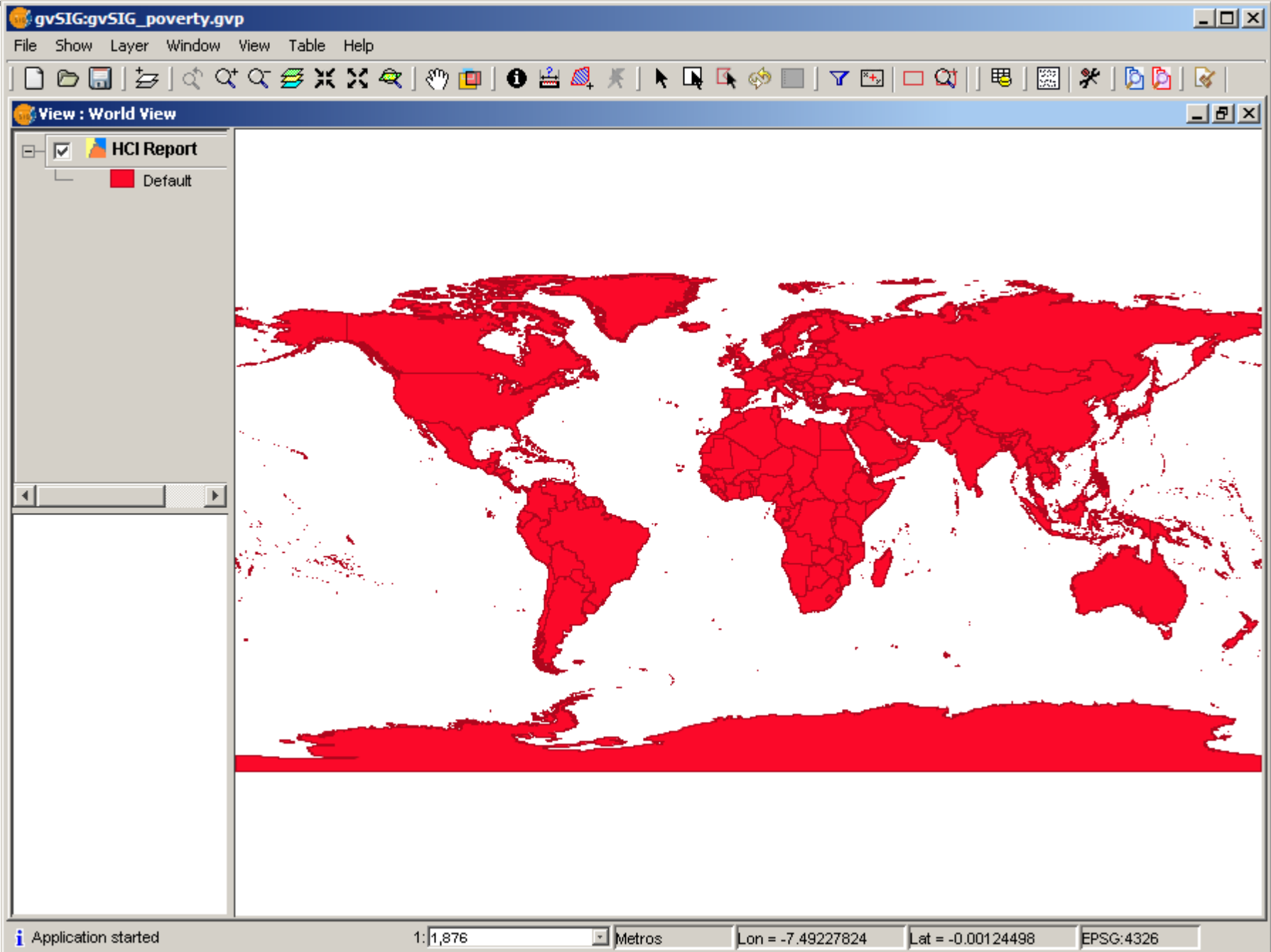
Type	Link	Show
WWW.DOWNLOAD-1.0-...	http://vam.wfp.org:80/geonetwork/srv/en/resources.get?id=544...	Download
WWW.LINK-1.0-http-link	http://vam.wfp.org:80/geonetwork/srv/en/resources.get?id=5423&f...	Web Site
WWW.DOWNLOAD-1.0-...	http://vam.wfp.org:80/geonetwork/srv/en/resources.get?id=544...	Download

Close

Evaluation of critical indicators (3)

- Add downloaded WFP report data
- Use indicator analysis to choose scope





gvSIG:gvSIG_poverty.gvp

File Show Layer Window View Table Help

View : World View

HCI Report
 Default

Table : Table of attributes: HCI Report

BASED_OUT	SF_COUNTRI	PHASED_O_1	SF_PRIORIT	HDI	LIFE_EXPECT	Z_GAP_BETW	GAP_BETWEE	TOTAL_WFP_	TOTAL_WFP1	TOTAL_1
1.0	0.0	0.0	1.0	0.0	46.0	54.0	3325000.0	2772000.0	231321.0	679808.0
0.0	0.0	0.0	0.0	-9999.0	-9999.0	-9999.0	-9999.0	-9999.0	-9999.0	-9999.0
0.0	0.0	0.0	0.0	72.0	73.7	67.0	31000.0	6000.0	0.0	0.0
2.0	0.0	0.0	0.0	103.0	71.0	86.0	319000.0	28000.0	0.0	0.0
0.0	0.0	0.0	0.0	-9999.0	-9999.0	-9999.0	-9999.0	-9999.0	-9999.0	-9999.0
0.0	0.0	0.0	0.0	-9999.0	-9999.0	-9999.0	-9999.0	-9999.0	-9999.0	-9999.0
0.0	0.0	0.0	0.0	-9999.0	-9999.0	-9999.0	-9999.0	-9999.0	-9999.0	-9999.0
0.0	0.0	0.0	0.0	-9999.0	-9999.0	-9999.0	-9999.0	-9999.0	-9999.0	-9999.0
1.0	0.0	1.0	1.0	160.0	40.7	95.0	2134000.0	105000.0	17641.0	19548.0
0.0	0.0	0.0	0.0	-9999.0	-9999.0	-9999.0	-9999.0	-9999.0	-9999.0	-9999.0
0.0	0.0	0.0	0.0	-9999.0	-9999.0	-9999.0	-9999.0	-9999.0	-9999.0	-9999.0
0.0	0.0	0.0	0.0	-9999.0	-9999.0	-9999.0	-9999.0	-9999.0	-9999.0	-9999.0
3.0	1996.0	-9999.0	-9999.0	-9999.0	-9999.0	-9999.0	-9999.0	-9999.0	-9999.0	-9999.0
0.0	0.0	0.0	0.0	-9999.0	-9999.0	-9999.0	-9999.0	-9999.0	-9999.0	-9999.0
2.0	0.0	0.0	0.0	83.0	71.4	89.0	194000.0	19000.0	15626.0	15749.0
0.0	0.0	0.0	0.0	-9999.0	-9999.0	-9999.0	-9999.0	-9999.0	-9999.0	-9999.0
0.0	0.0	0.0	0.0	-9999.0	-9999.0	-9999.0	-9999.0	-9999.0	-9999.0	-9999.0
0.0	0.0	0.0	0.0	-9999.0	-9999.0	-9999.0	-9999.0	-9999.0	-9999.0	-9999.0
0.0	0.0	0.0	0.0	-9999.0	-9999.0	-9999.0	-9999.0	-9999.0	-9999.0	-9999.0
0.0	0.0	0.0	0.0	-9999.0	-9999.0	-9999.0	-9999.0	-9999.0	-9999.0	-9999.0
0.0	0.0	0.0	0.0	-9999.0	-9999.0	-9999.0	-9999.0	-9999.0	-9999.0	-9999.0
2.0	0.0	0.0	0.0	101.0	66.9	47.0	122000.0	40000.0	2489.0	2762.0
0.0	0.0	0.0	0.0	-9999.0	-9999.0	-9999.0	-9999.0	-9999.0	-9999.0	-9999.0
0.0	0.0	0.0	0.0	-9999.0	-9999.0	-9999.0	-9999.0	-9999.0	-9999.0	-9999.0
0.0	0.0	0.0	0.0	-9999.0	-9999.0	-9999.0	-9999.0	-9999.0	-9999.0	-9999.0
1.0	0.0	1.0	1.0	139.0	62.6	76.0	8834000.0	602000.0	306530.0	305613.0
3.0	1993.0	-9999.0	-9999.0	-9999.0	-9999.0	-9999.0	-9999.0	-9999.0	-9999.0	-9999.0
0.0	0.0	0.0	0.0	-9999.0	-9999.0	-9999.0	-9999.0	-9999.0	-9999.0	-9999.0
0.0	0.0	0.0	0.0	-9999.0	-9999.0	-9999.0	-9999.0	-9999.0	-9999.0	-9999.0

0 / 272 Total of selected records.

i Application started Metros Lon = -7.49061204 Lat = -0.0009993 EPSG:4326



gvSIG:gvSIG_poverty.gvp

File Show Window View Help

View : World View

HCI Report
 Default

Layer properties

General Symbols

Legend: HCI Report (Unique symbols) Default legend

Unique symbols
 Unique values
 Intervals
 Labelling

Show the layers features using a range of color according to values of a attribute field.

Classification field: HDI

Interval type: Natural intervals Other values

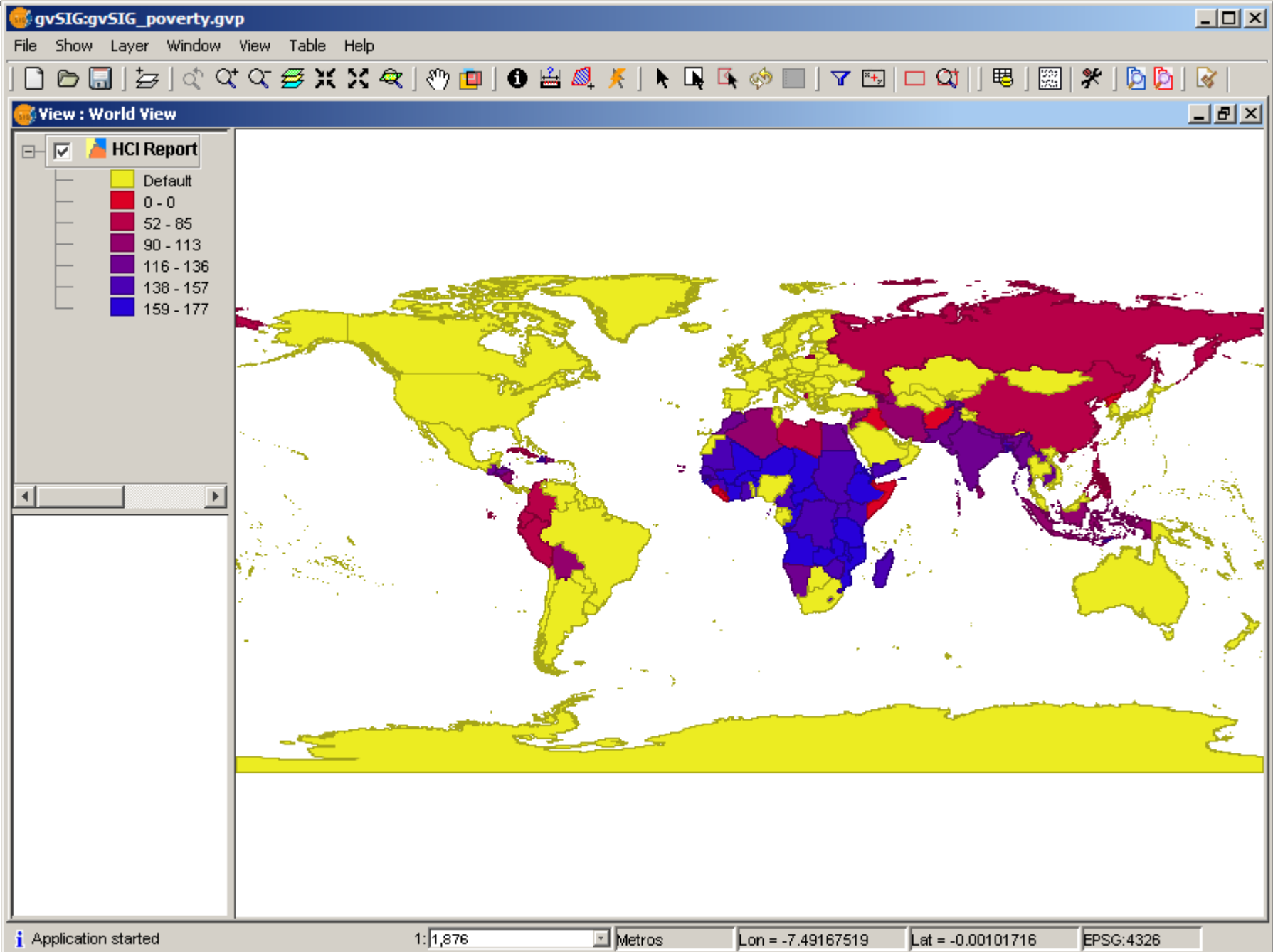
Begin color: End color: Nr of intervals: 7

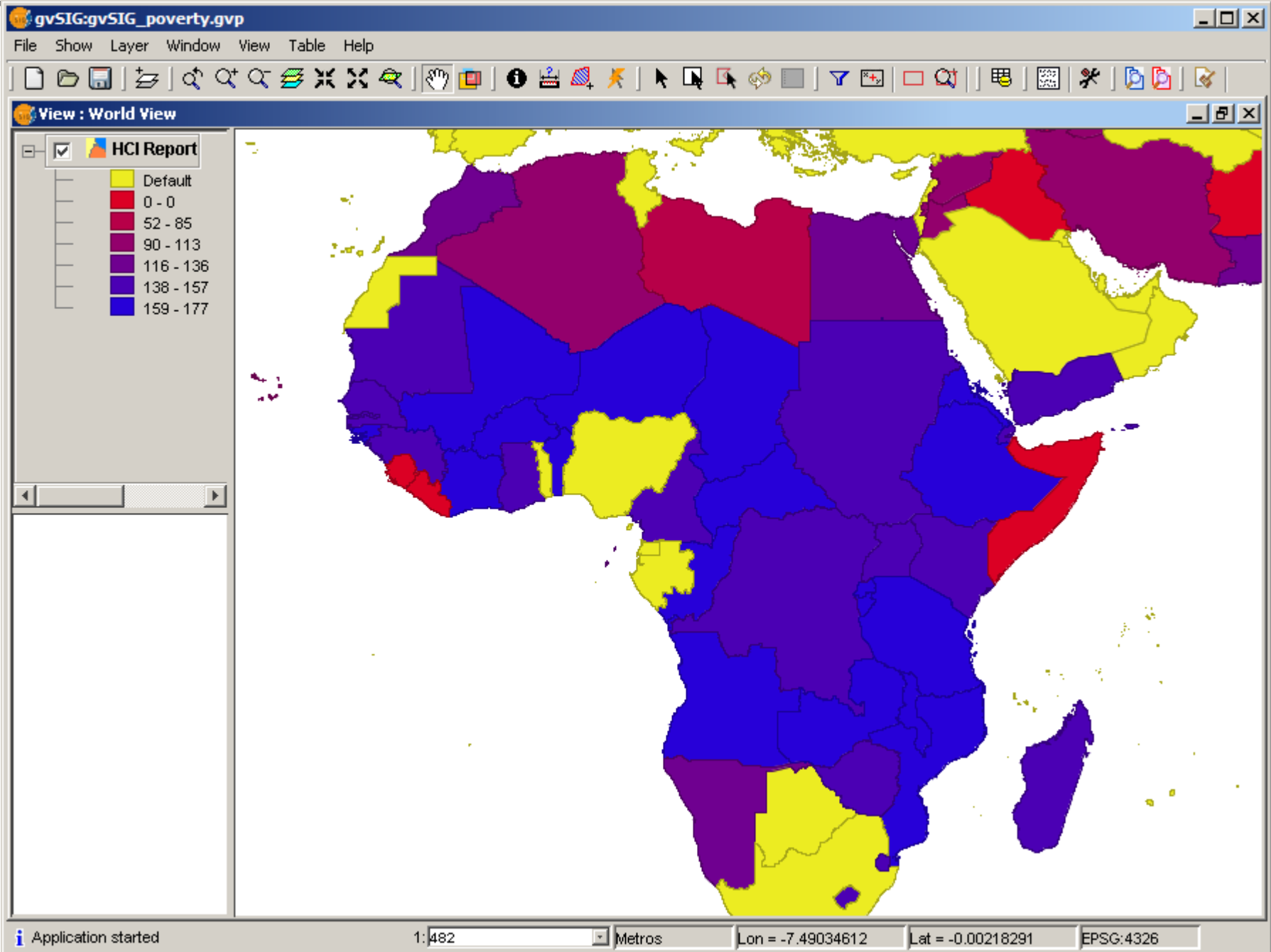
Symbol	Value	Label
	0.0-0.0	0 - 0
	52.0-85.0	52 - 85
	90.0-113.0	90 - 113
	116.0-136.0	116 - 136
	138.0-157.0	138 - 157
	159.0-177.0	159 - 177

Compute intervals Add Remove all Remove

Accept Apply Save legend... Load legend... Close

i Application started Metros Lon = -7.4922827 Lat = -0.00119808 EPSG:4326





Evaluation of critical indicators (4)

- Search WMU catalog for infant mortality data
- Use analysis to choose type of action:
establishment of infant nutrition/health care centers

Search in WMU Catalog for WMS with infant data

Geodata Search - Connection

Fill the catalog server address

Database name

Server Answer

Protocols
 Z39.50
 SRU/SRW
 CS-W

Version:

Geodata search [http://laits.gmu.edu:8099/csw4demo/discovery]

Service

Title
 Restrict search area

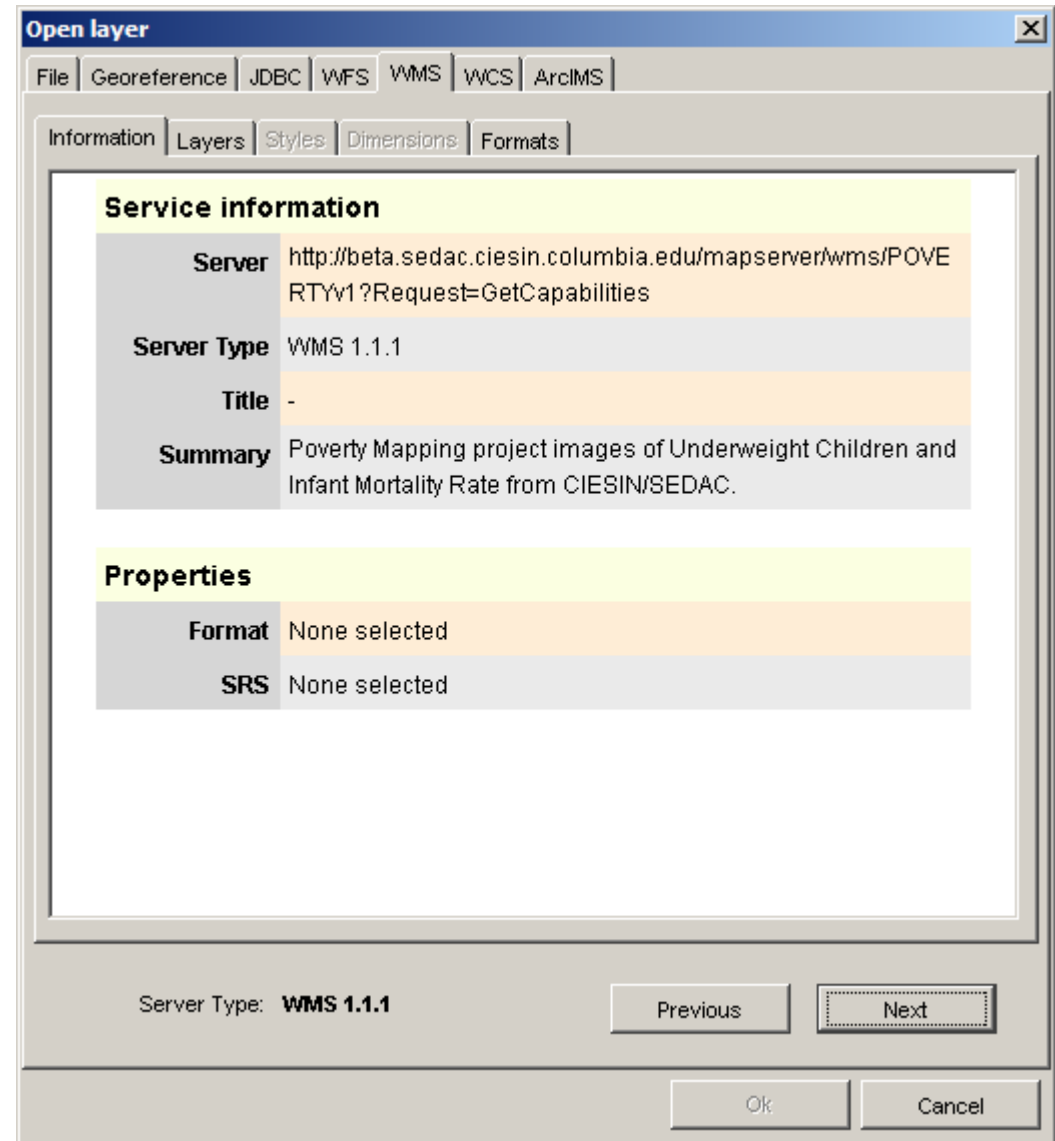
Search results

Results: 6 of 6

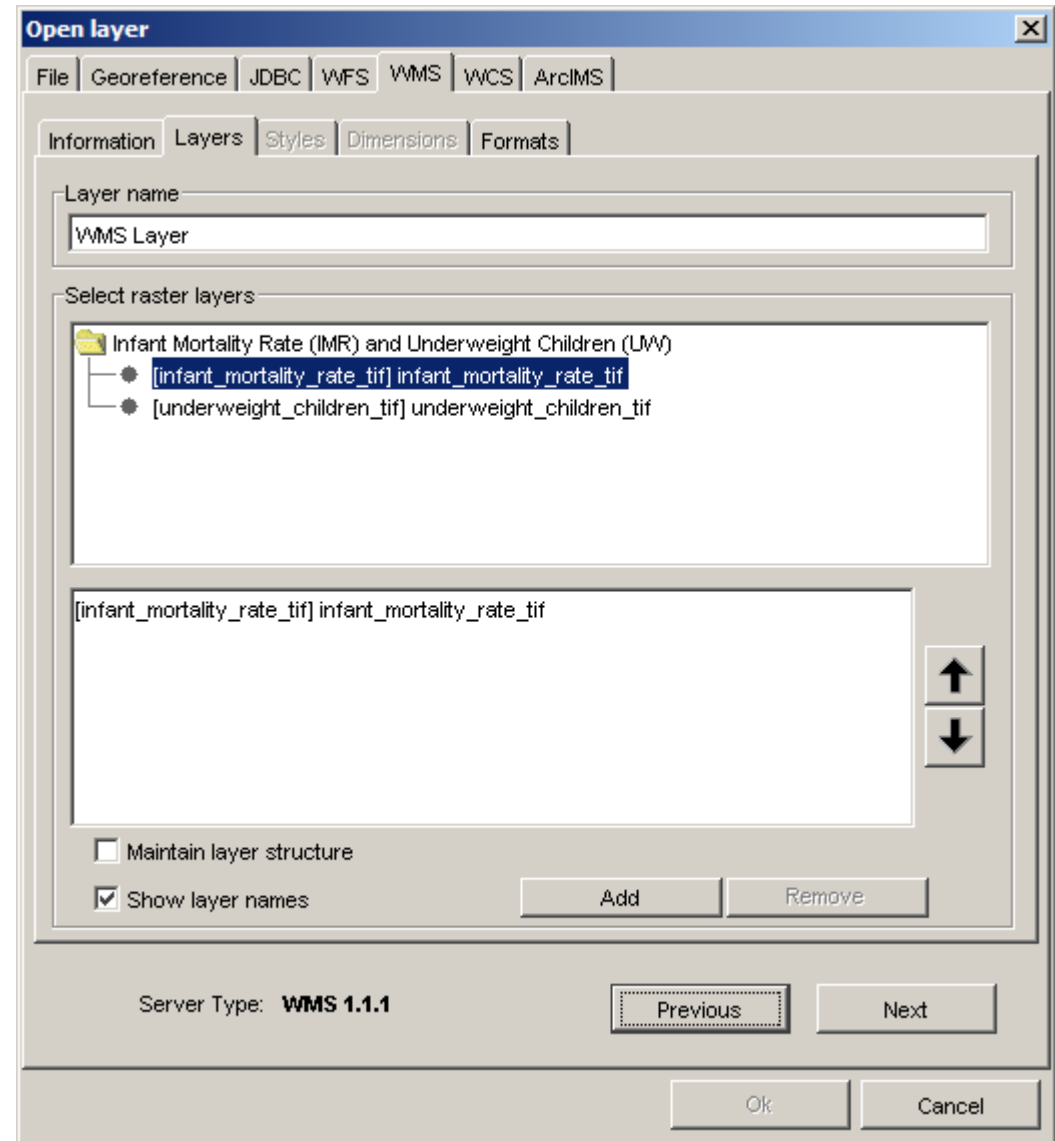
[Infant Mortality Rates and Underweight Children](#)

Abstract: WMS of Infant Mortality Rates (deaths per 1,000 live births) and underweight children (children under age 5) from the Poverty Mapping project. Provided by CIESIN/SEDAC <http://www.ciesin.columbia.edu/poverty>
<http://beta.sedac.ciesin.columbia.edu/mapserver/wms/POVERTYv1?Request=GetCapabilities>

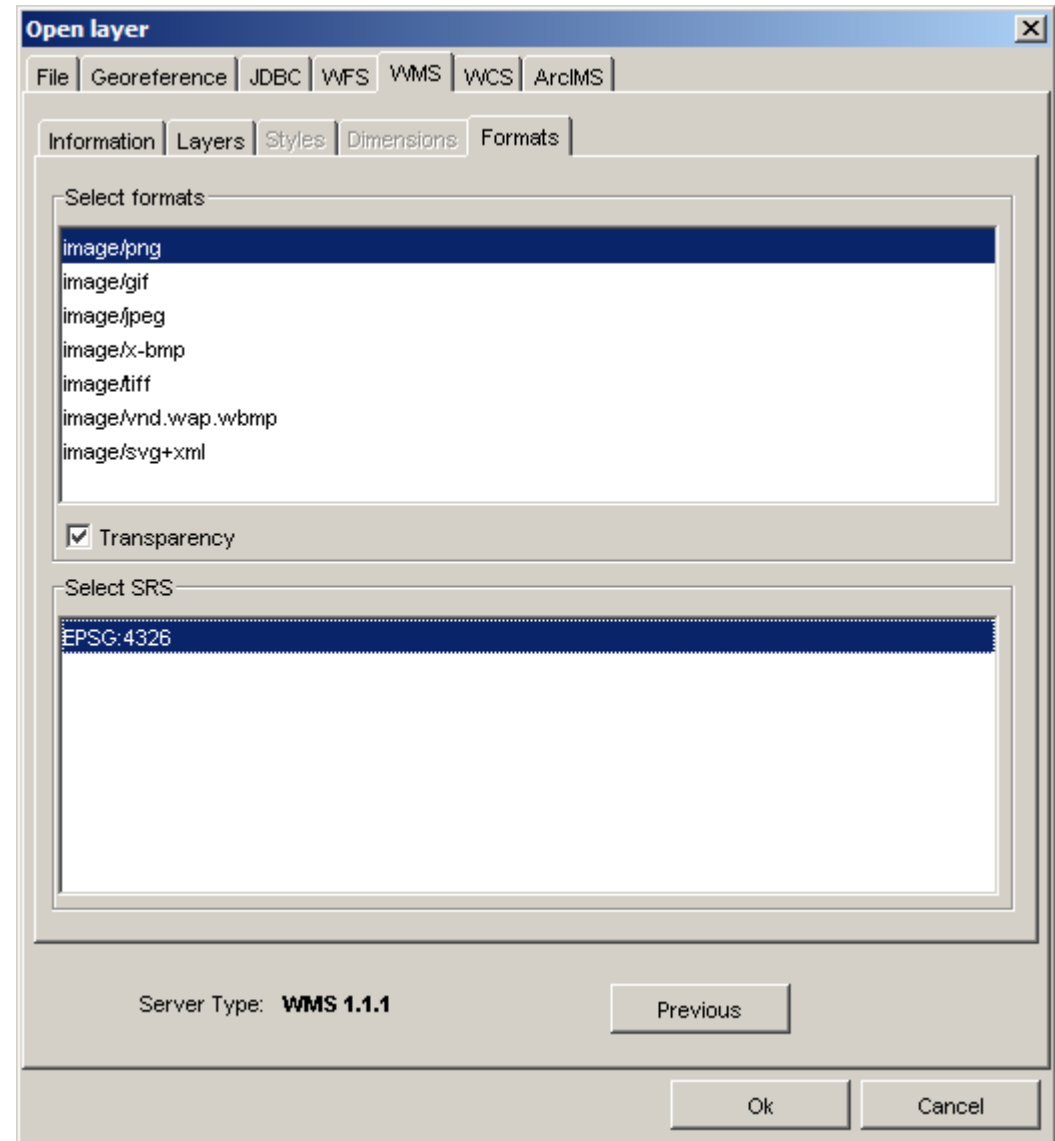
Load WMS with infant mortality data

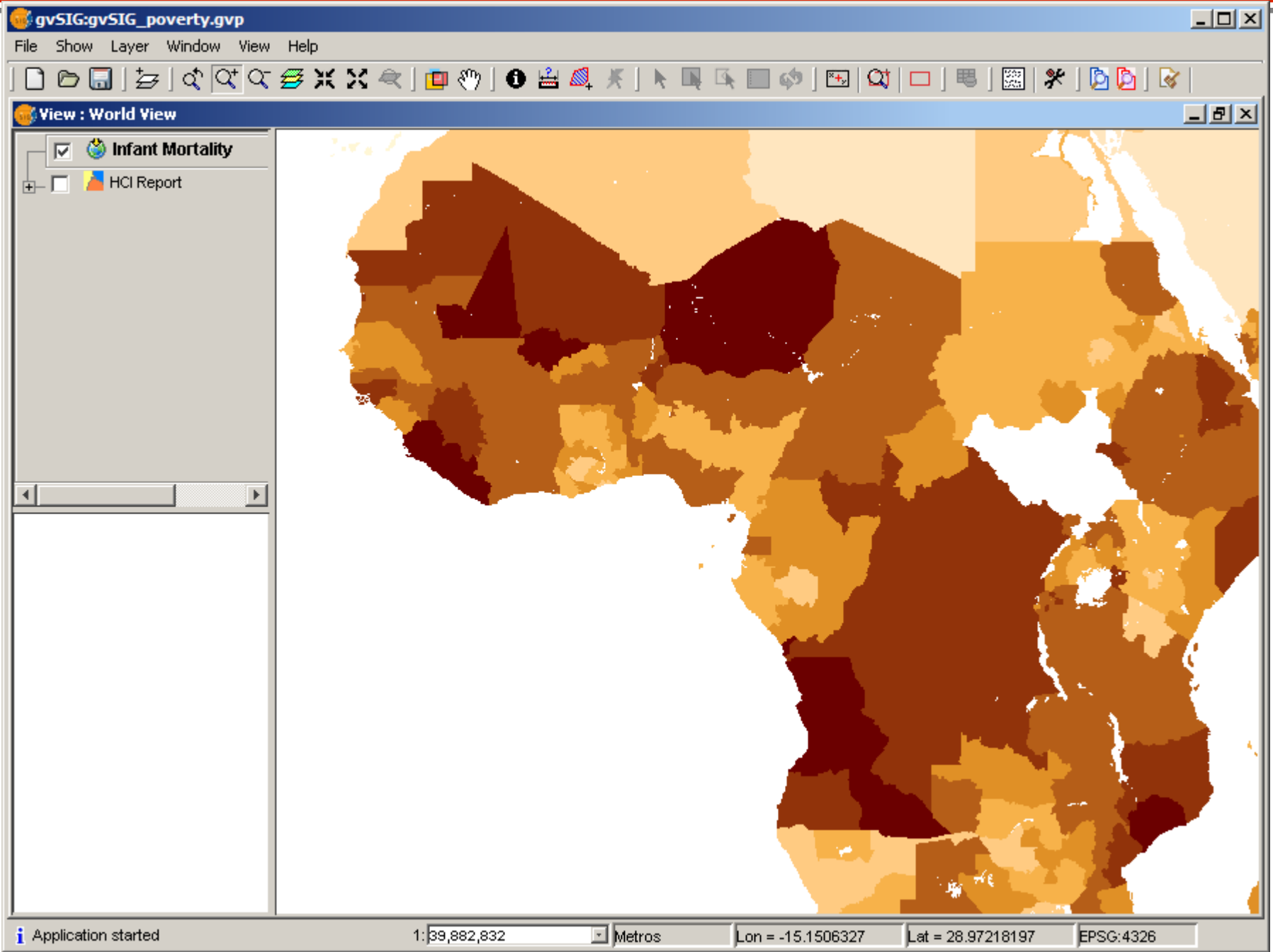


Load WMS with infant mortality data



Load WMS with infant mortality data

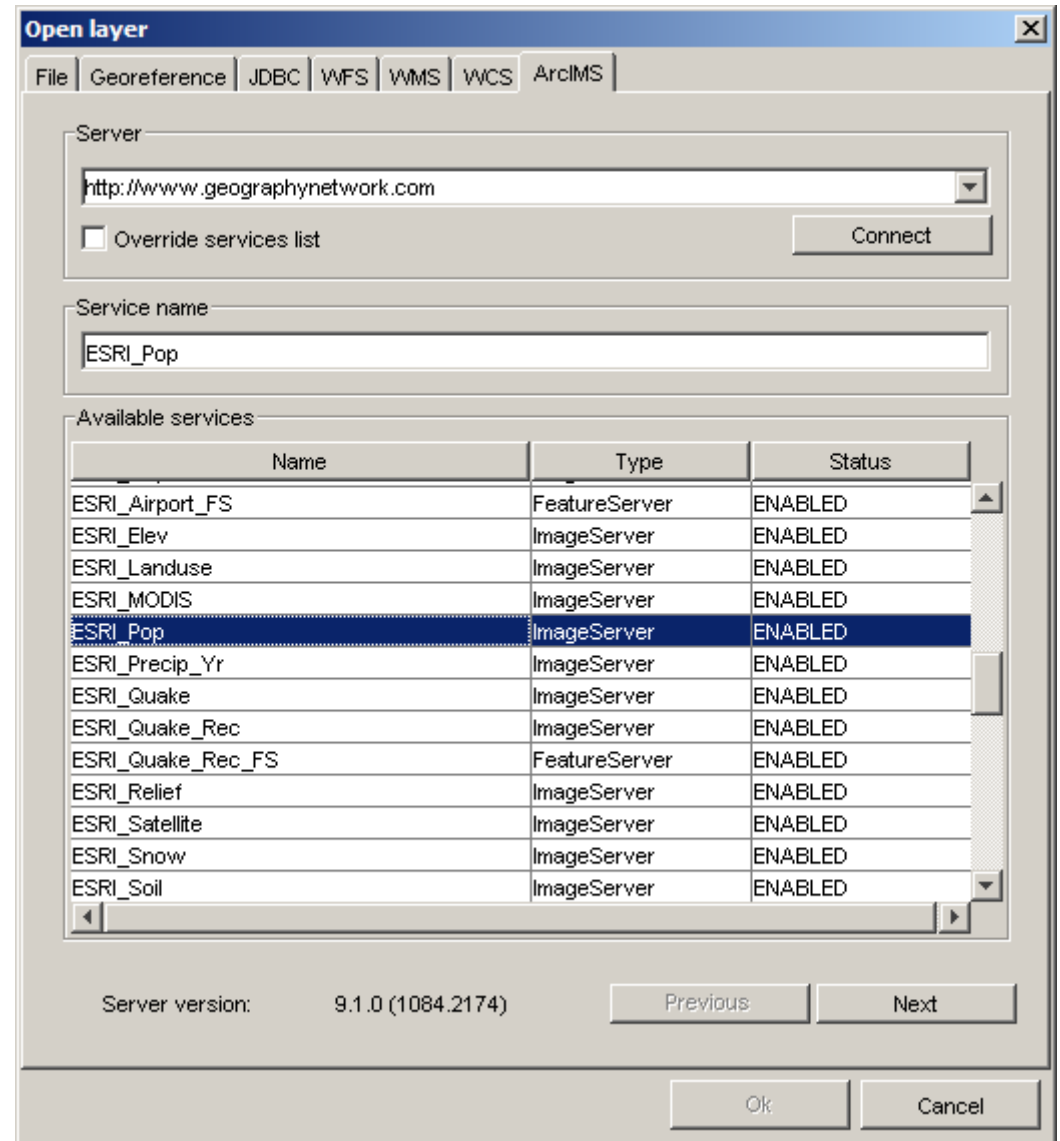




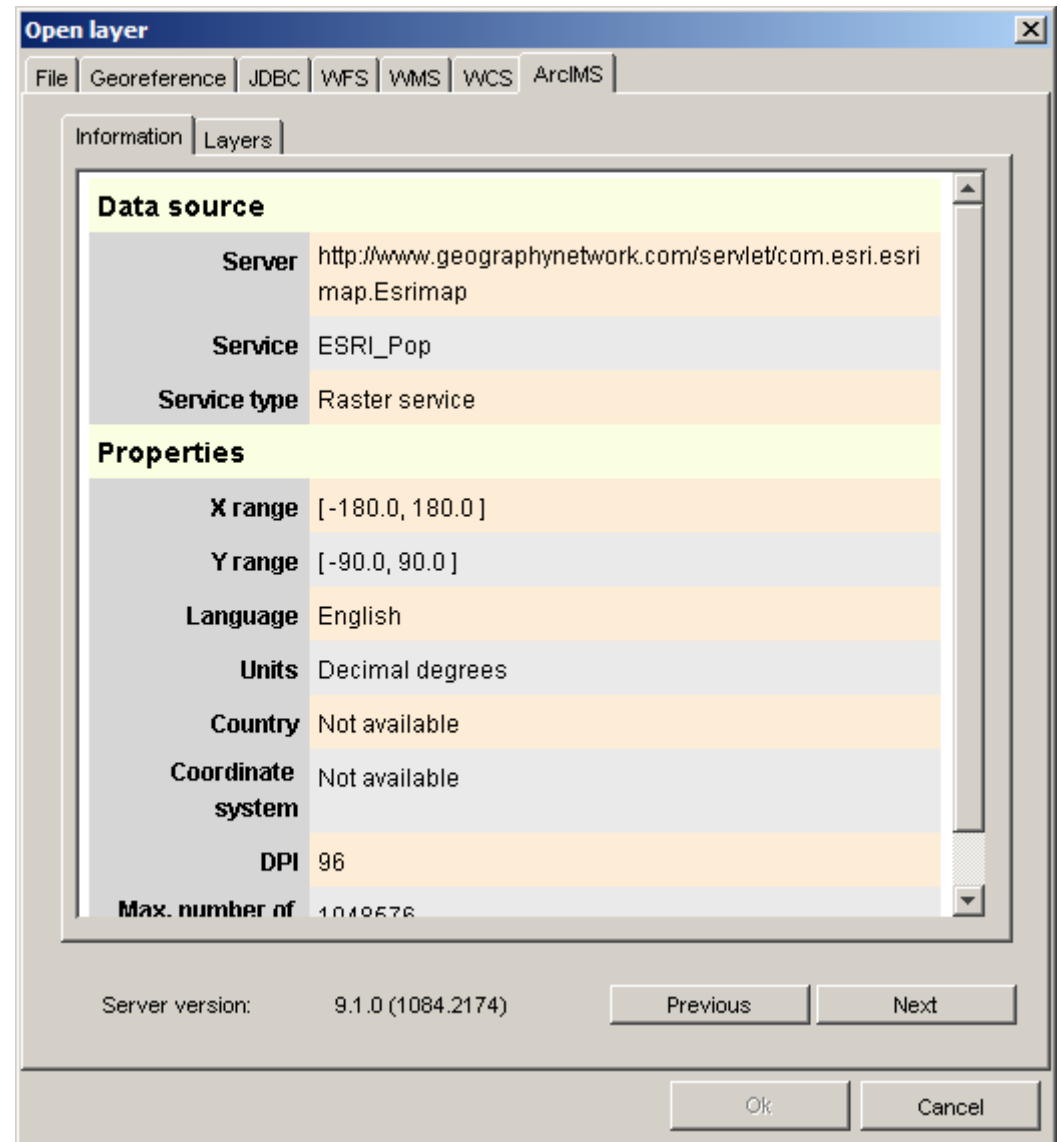
Determine suitable locations and scope of action

- Prepare proposal for infant feeding/health care centers in critical areas
 - Load maps and data from remote services
 - Narrow down scope of action

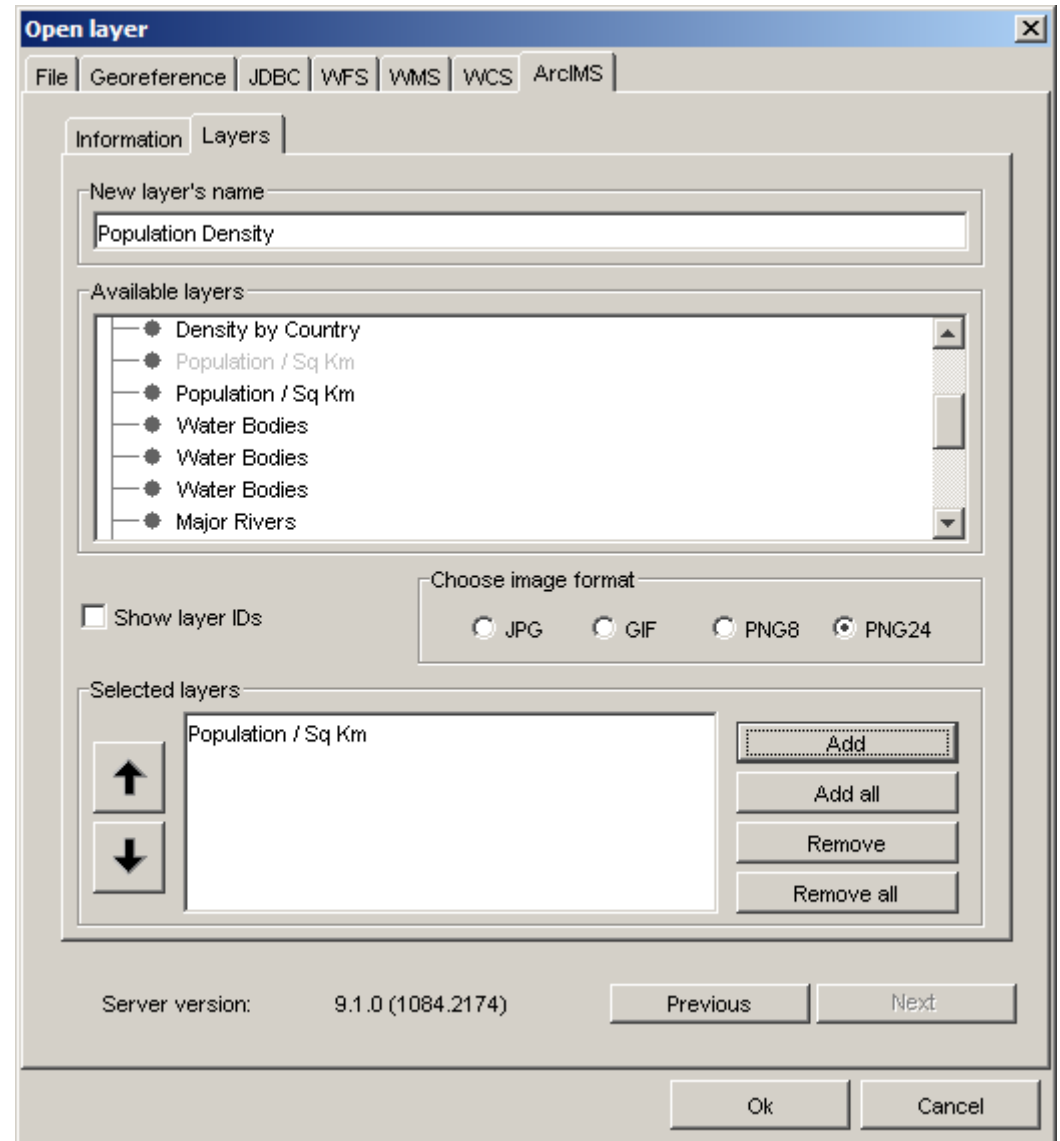
Add ArcIMS service (not standard :-) with Population Density



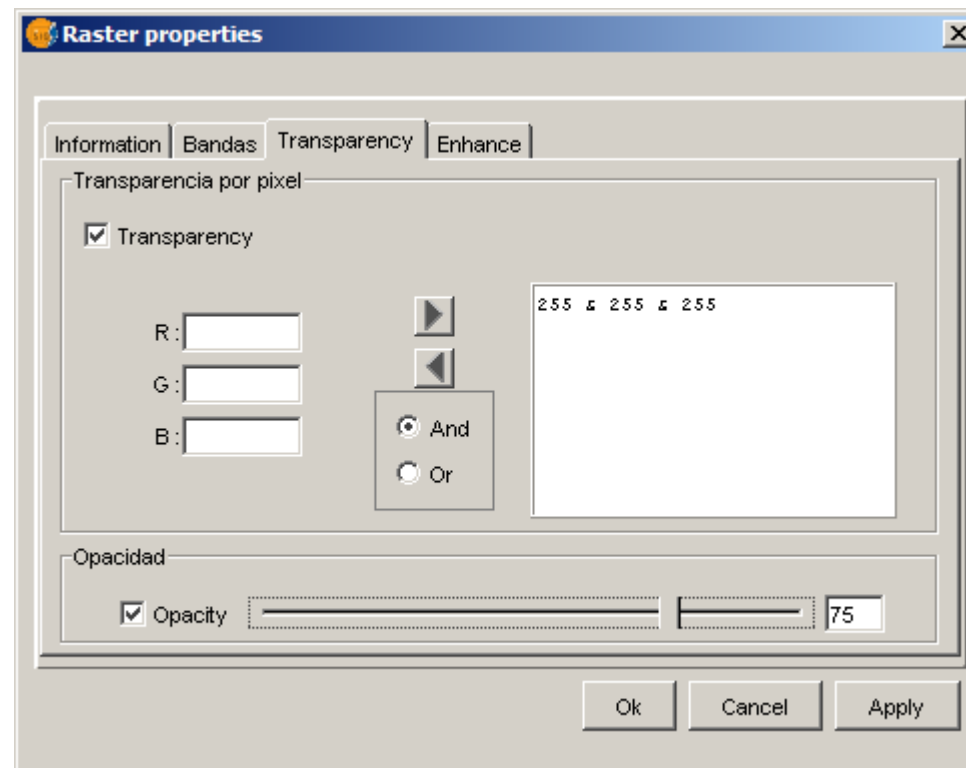
Add ArcIMS service (not standard :-) with Population Density

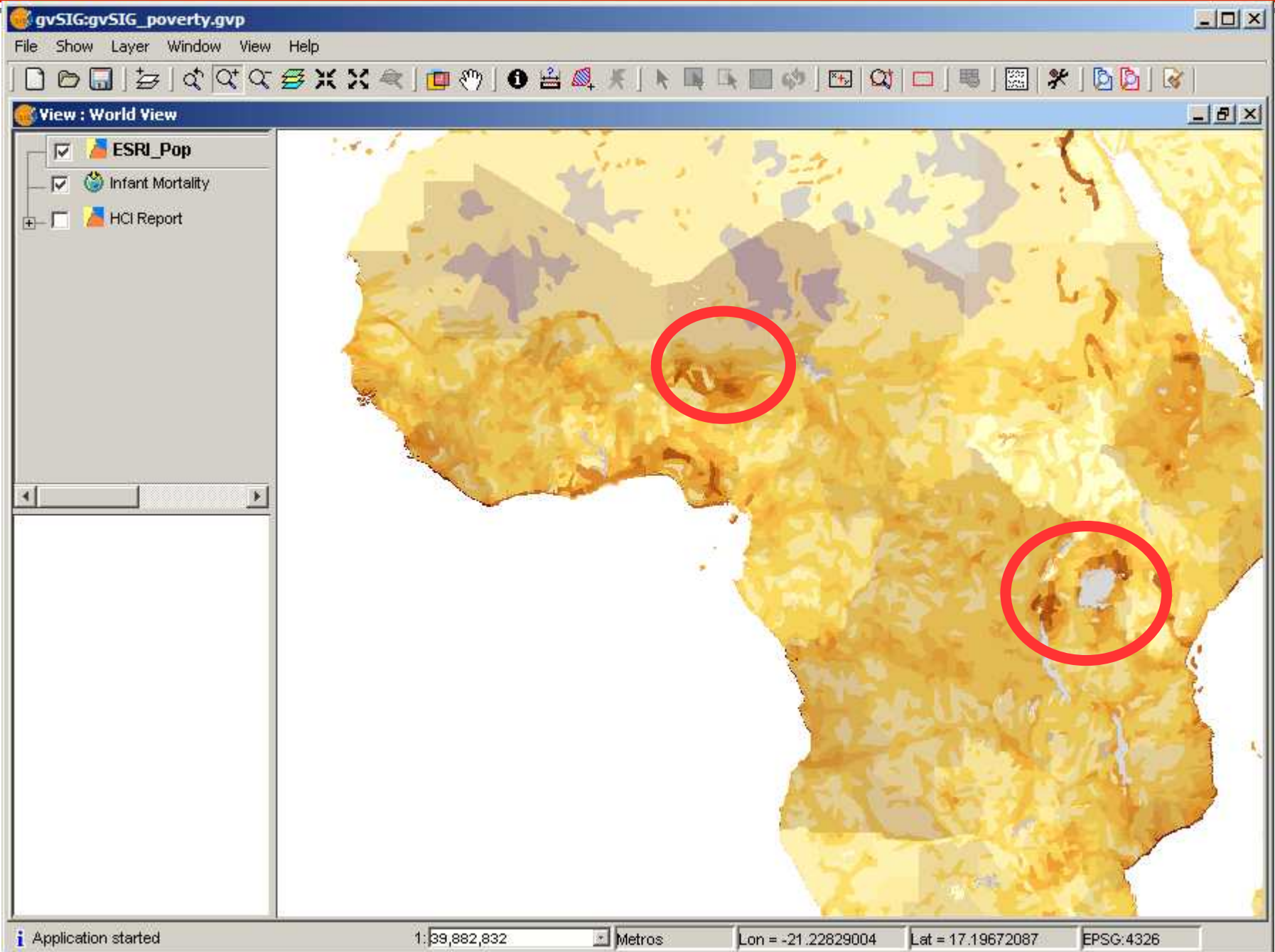


Add ArcIMS service (not standard :-) with Population Density



Use transparency to overlay information
and find priority areas for action

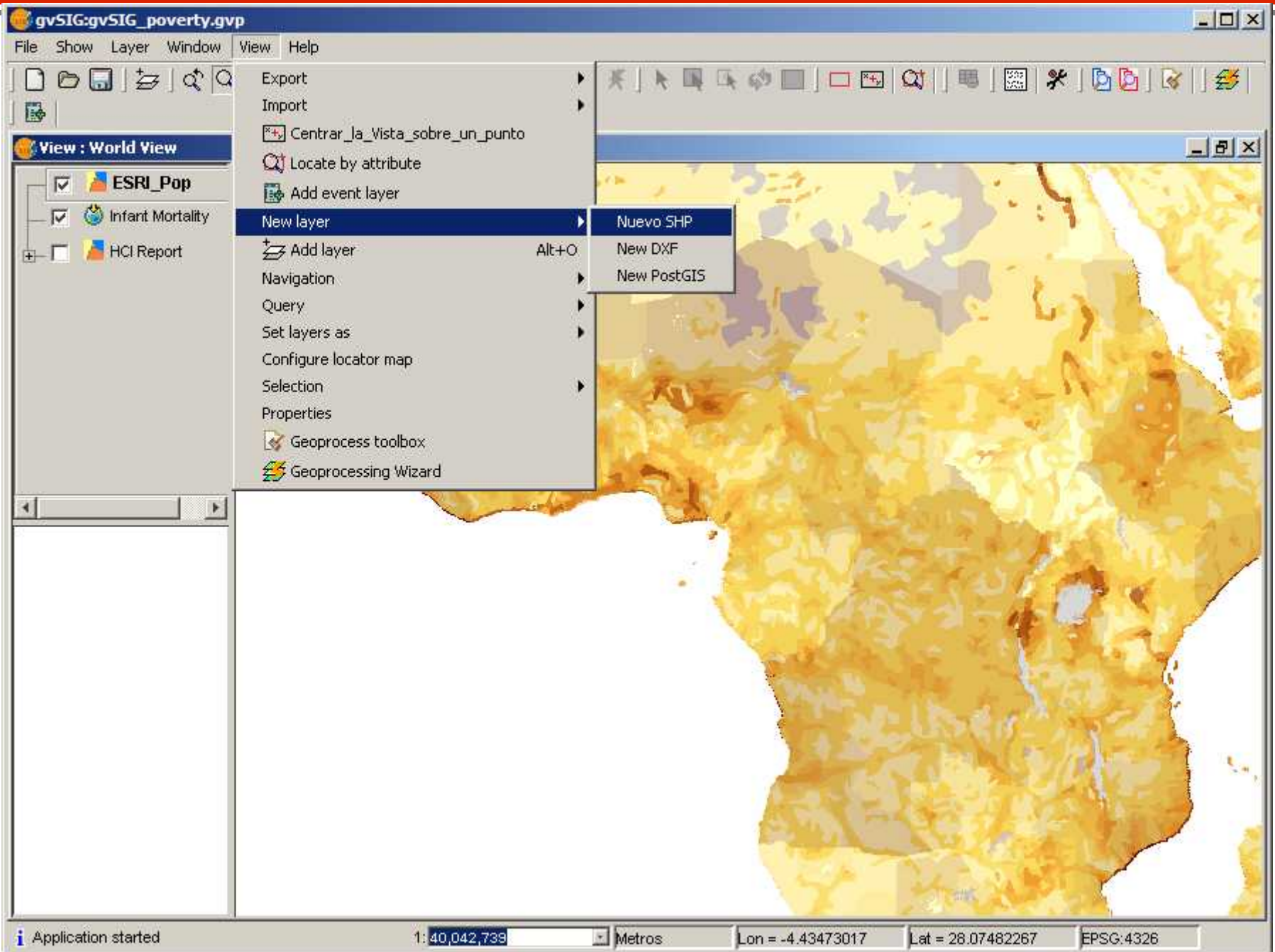


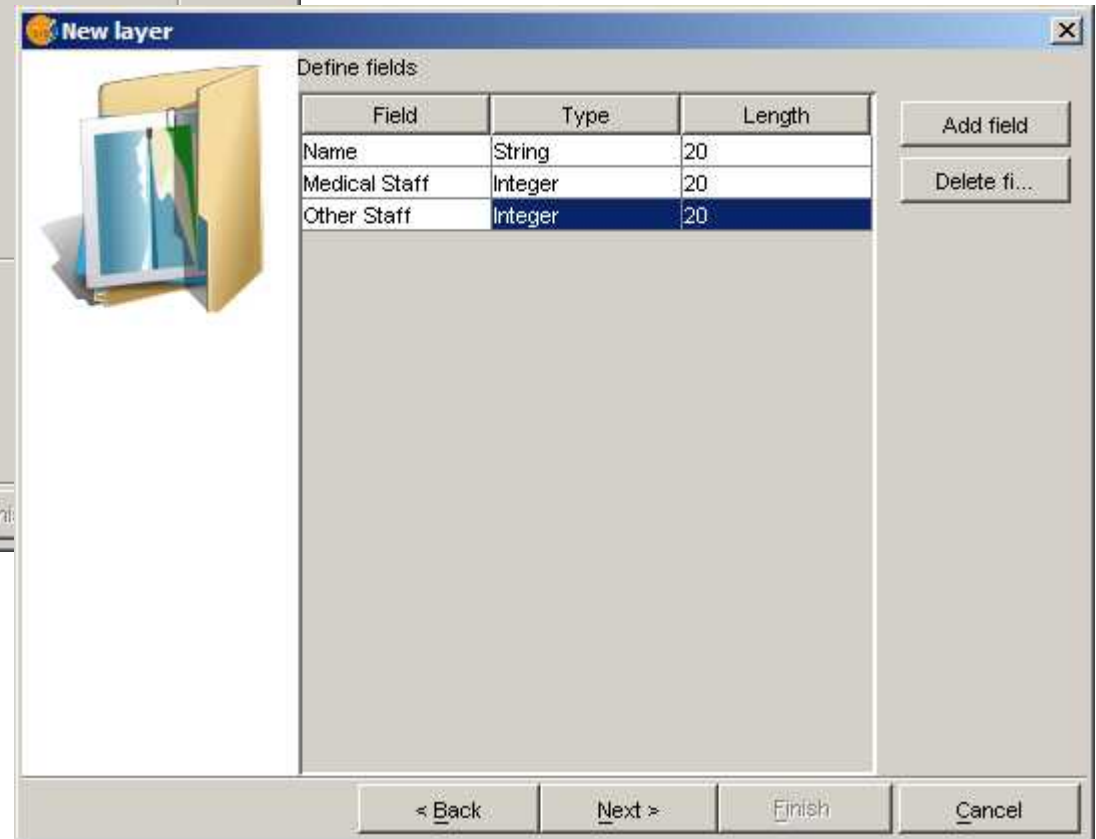
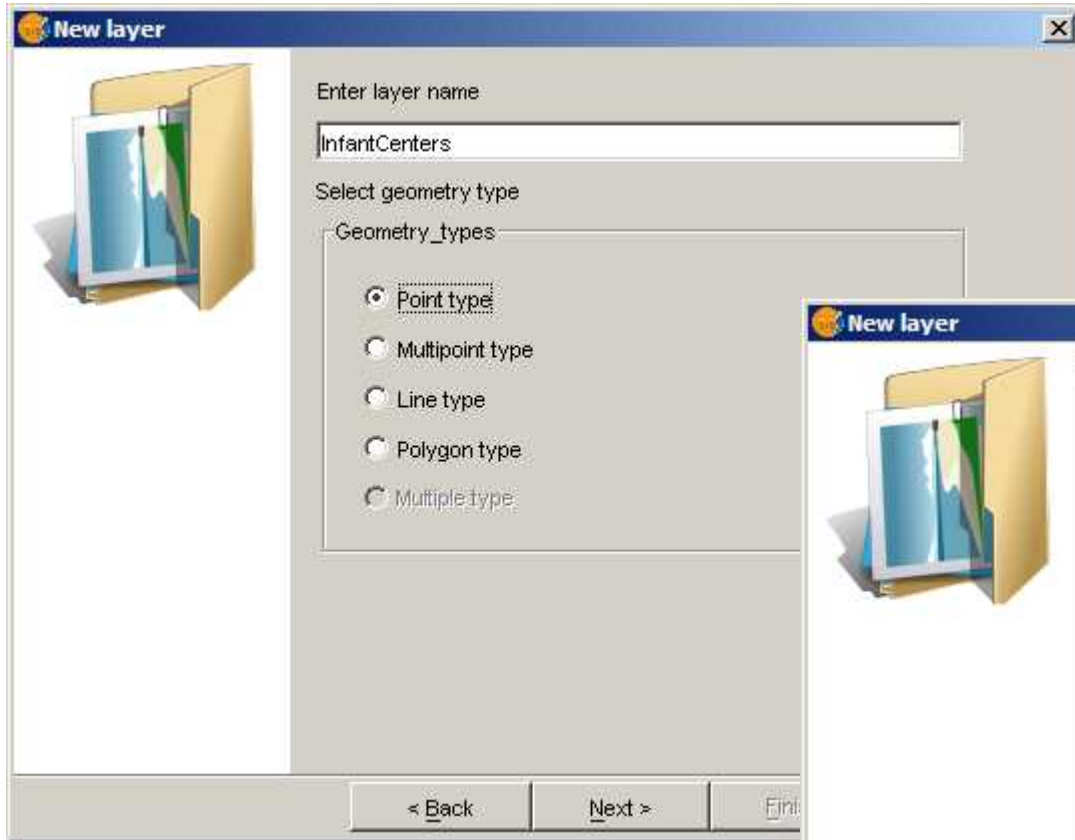


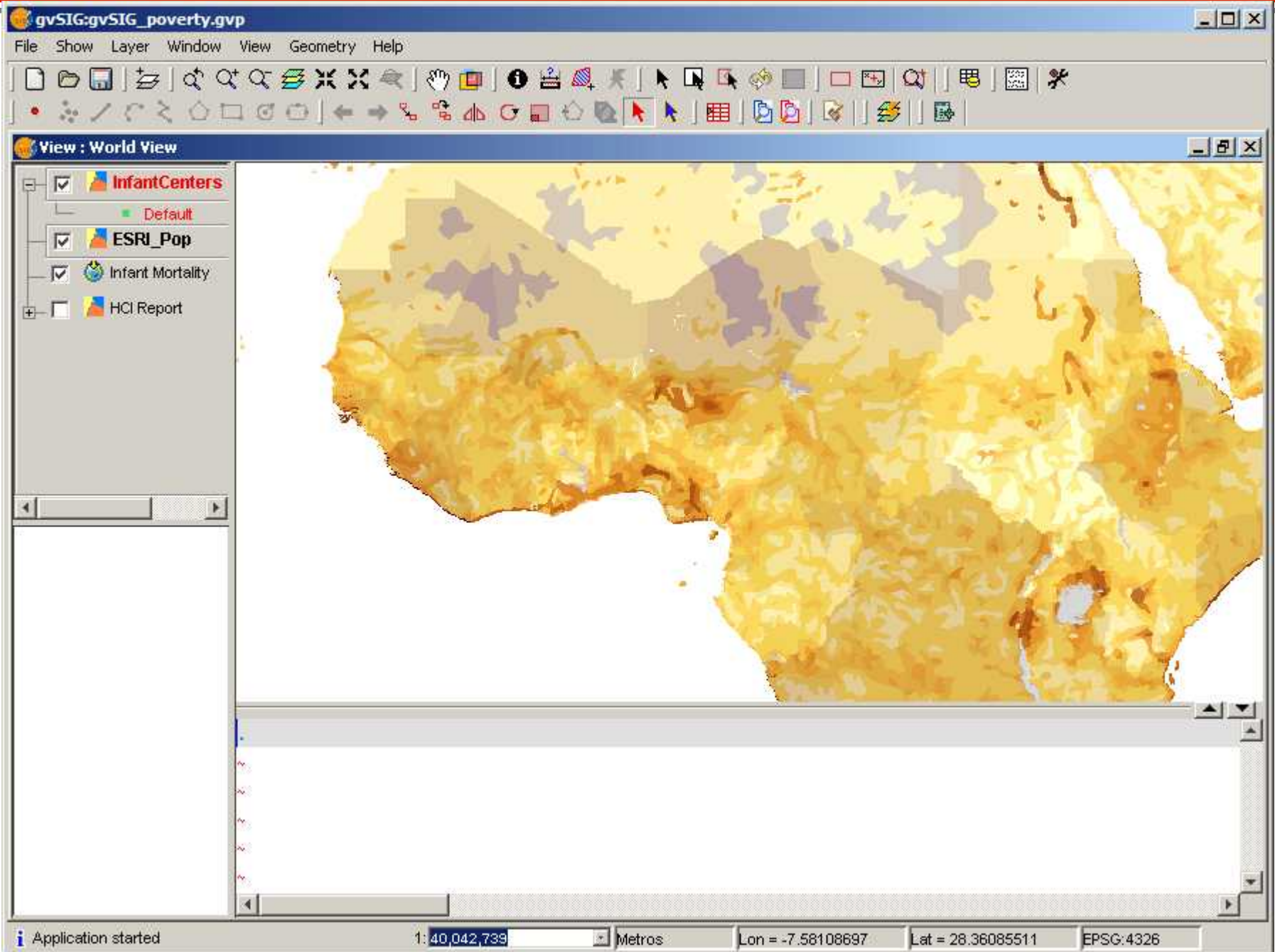
Determine suitable locations and scope of action (2)

- Prepare proposal for infant feeding/health care centers in critical areas
 - Edit new layer with proposed locations
 - Evaluate coverage

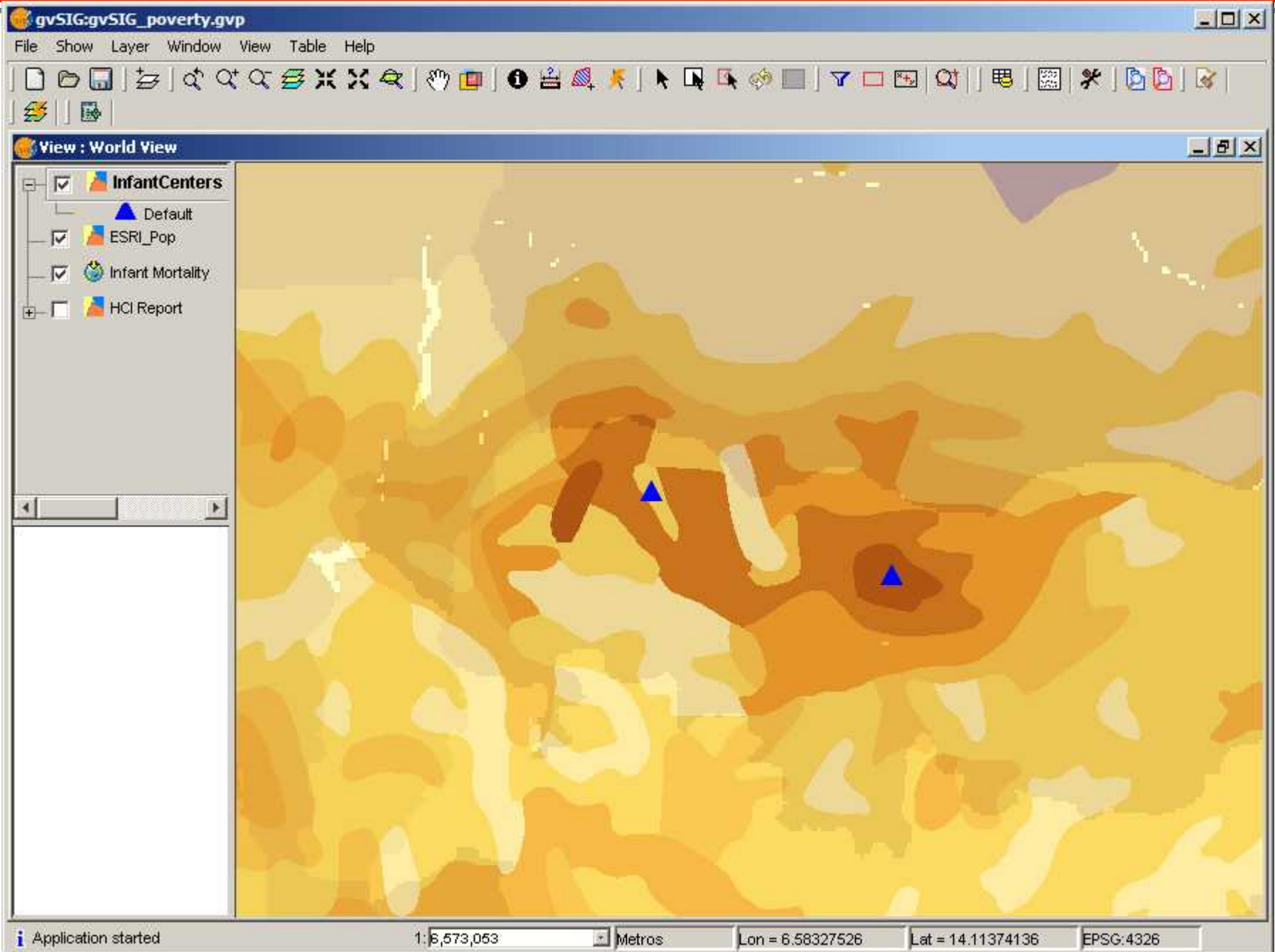
Use editing environment to create a new layer with proposed location points







Application started | 1:6,573,053 | Metros | Lon = 8.77439166 | Lat = 11.81306915 | EPSG:4326



Use geoprocessing tools to evaluate
coverage of action

The screenshot shows the gvSIG software interface. The title bar reads "gvSIG:gvSIG_poverty.gvp". The menu bar includes "File", "Show", "Layer", "Window", "View", "Table", and "Help". The toolbar contains various icons for file operations, navigation, and analysis. The main window is titled "View : World View" and displays a map with a yellow and orange color scheme. A "Geoprocess toolbox" window is open, showing a tree view of geoprocesses under "Analysis" > "Proximidad". The "Buffer" tool is selected. The description for the "Buffer" tool is as follows:

Buffer

This geoprocess creates a new polygon layer, with polygon buffers of the geometries of the input layer.

Input layer geometries could have any geometry type (point, line or polygon). For each input geometry, you could create one or many equidistant polygon buffer rings. Also, if input geometry type is polygon, the buffer could be internal, external or both.

Below the text is a diagram illustrating the buffer process. It shows three irregular polygons (representing input geometries) with concentric rings of different colors (yellow, orange, red, brown) around them, representing the creation of equidistant polygon buffer rings.

At the bottom of the toolbox window are two buttons: "Open Geoprocess" and "Close".

The status bar at the bottom of the main window shows: "Application started", "1:6,463,299", "Metros", "Lon = 2.95762514", "Lat = 12.94004515", and "EPSG:4326".

Analysys Tools [X]

Buffer. Data input:

Input cover: InfantCenters [v]

Use selected features only

Number of selected features: 2

Buffer defined by distance: 10000 [v]

Buffer defined by field: Name [v]

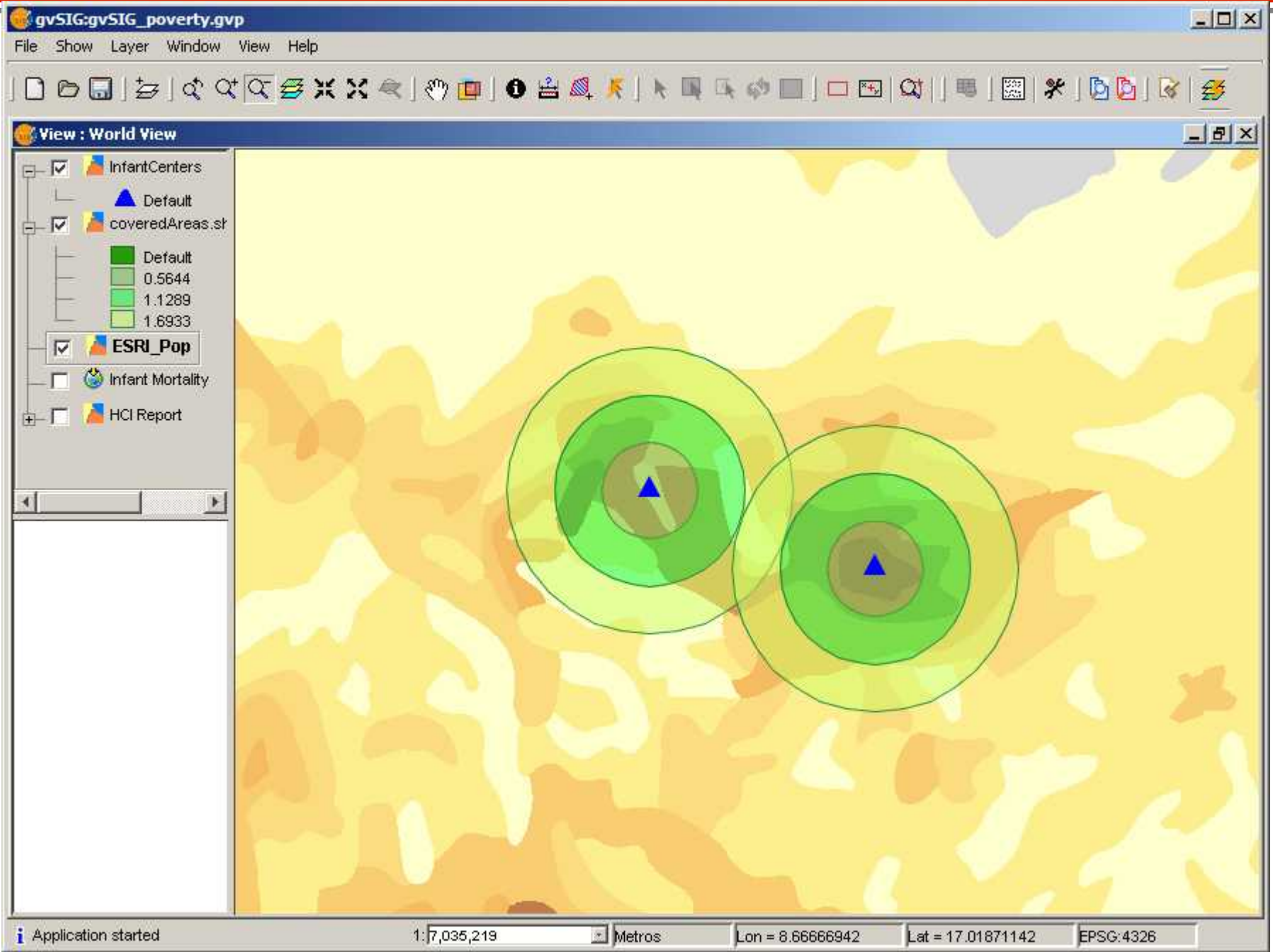
Dissolve entities Rectangle end cap

Create Buffer... Outside the polygon [v]

Number of radial buffers: 3 [v]

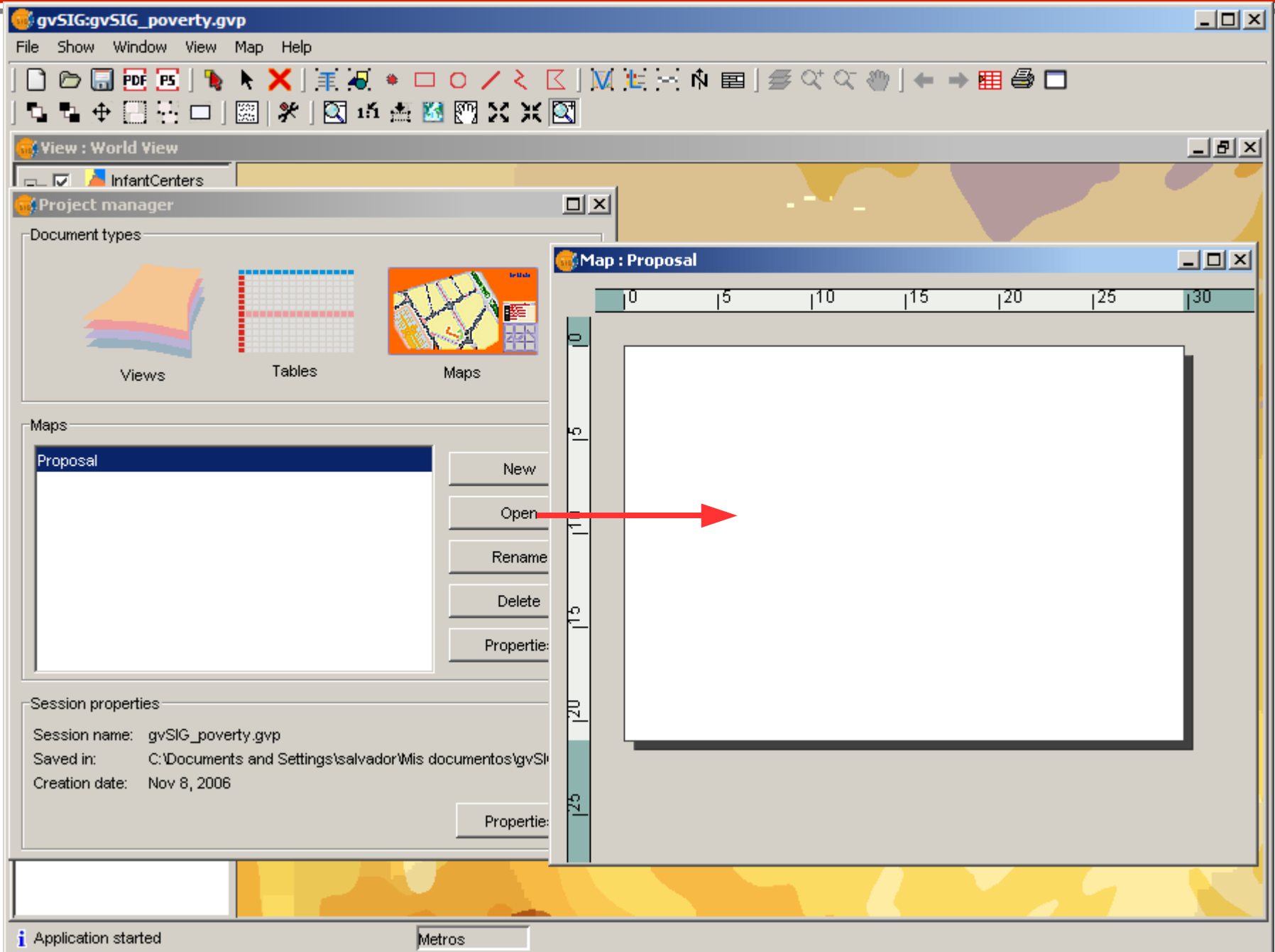
Output cover: 'ador\Mis documentos\coveredAreas.shp' [v] [Choose]

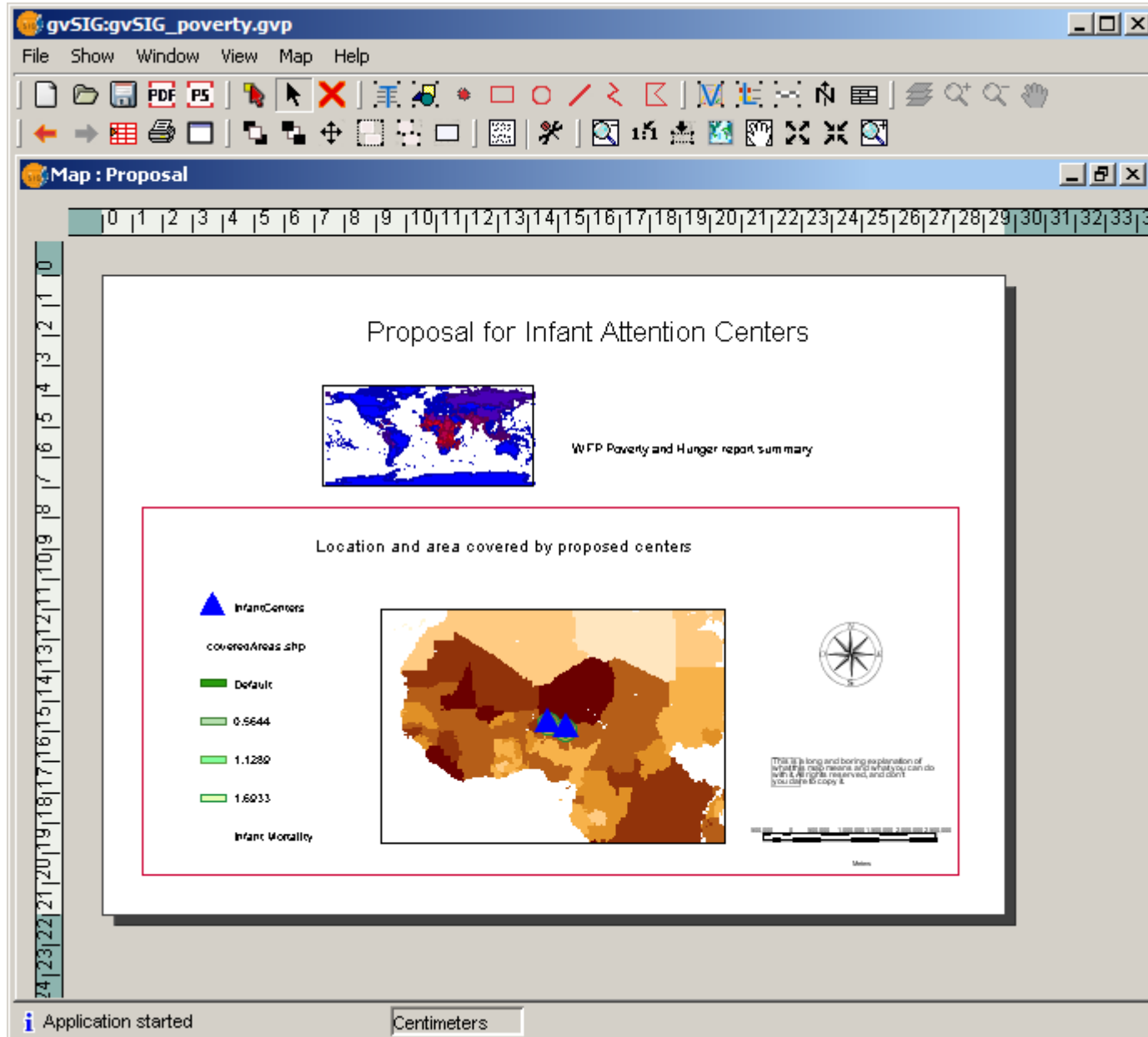
[Ok] [Cancel]



Presentation of results

- Create a map with the study results and use it for proposal presentation





Thanks

- Contact information:

Salvador Bayarri:

salvador.bayarri@iver.es

Gabriel Carrión Rico:

carrion_gab@gva.es

Mike Gould:

gould@lsi.uji.es



www.gvsig.gva.es

www.gvsig.com