

# gvSIG Desktop raster



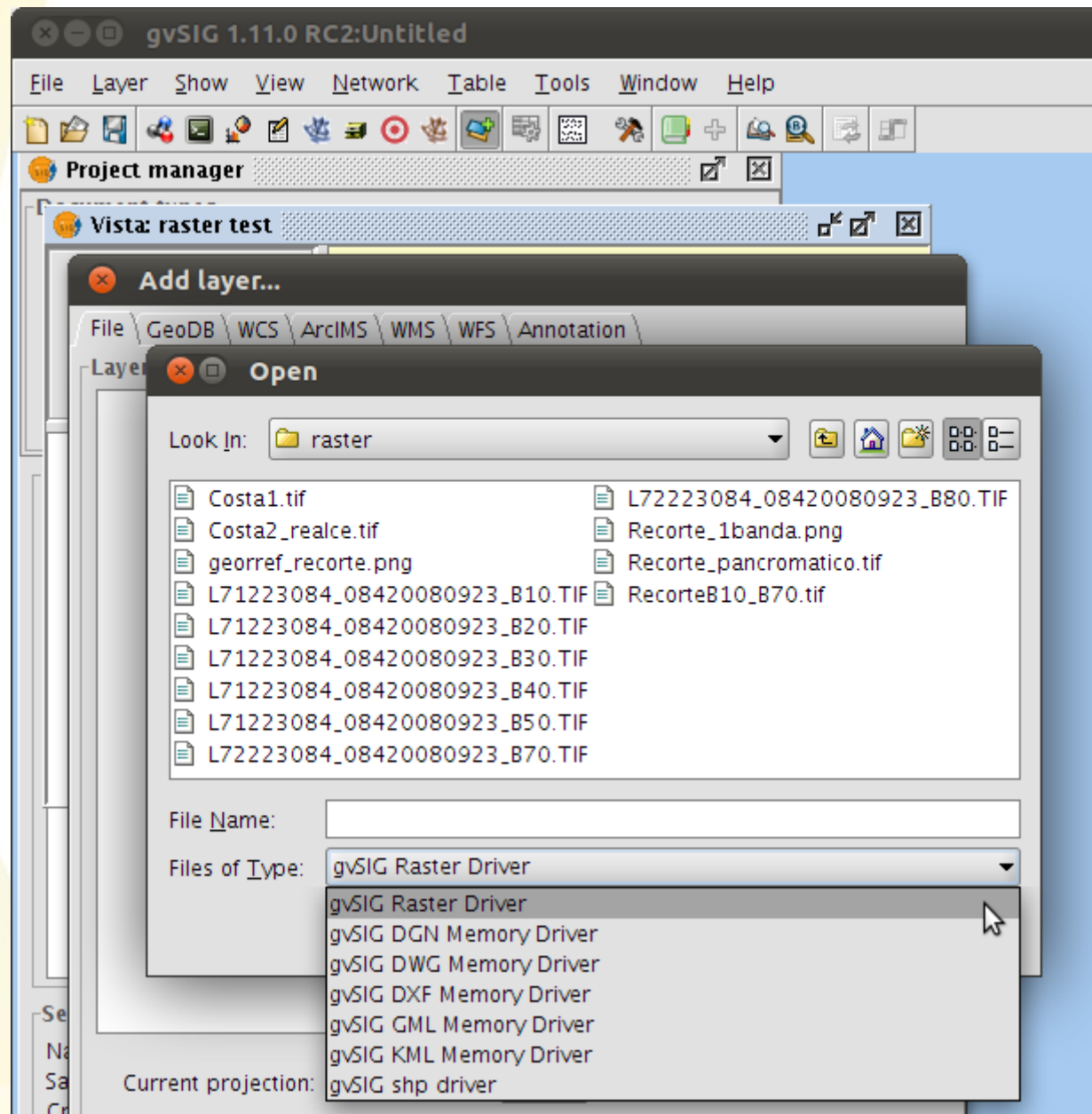
Mario Carrera  
mcarrera@gvsig.com

Amelia del Rey  
adelrey@gvsig.com

José Vicente Higón  
jvhigon@gvsig.com

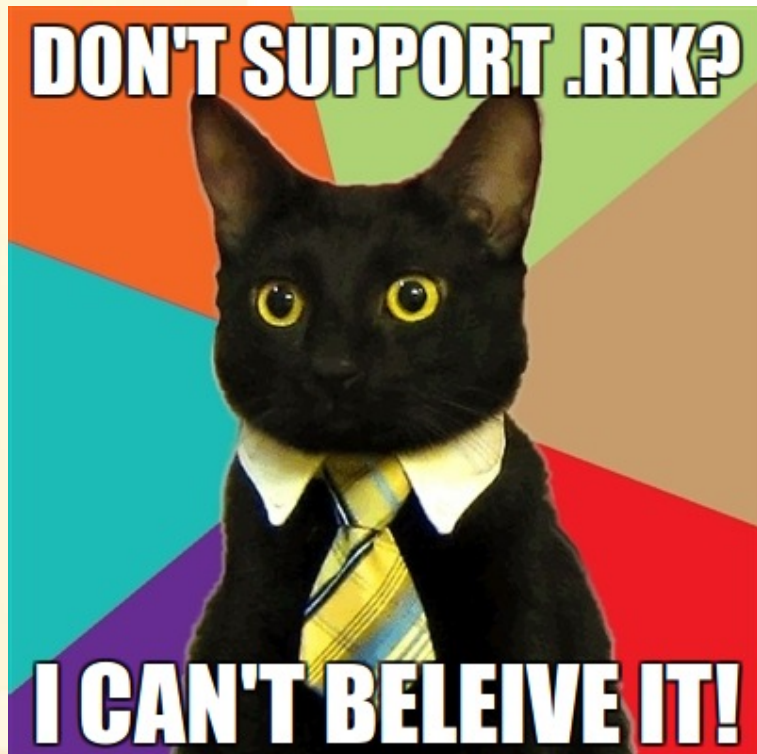
Jorge Sanz  
jsanz@gvsig.com



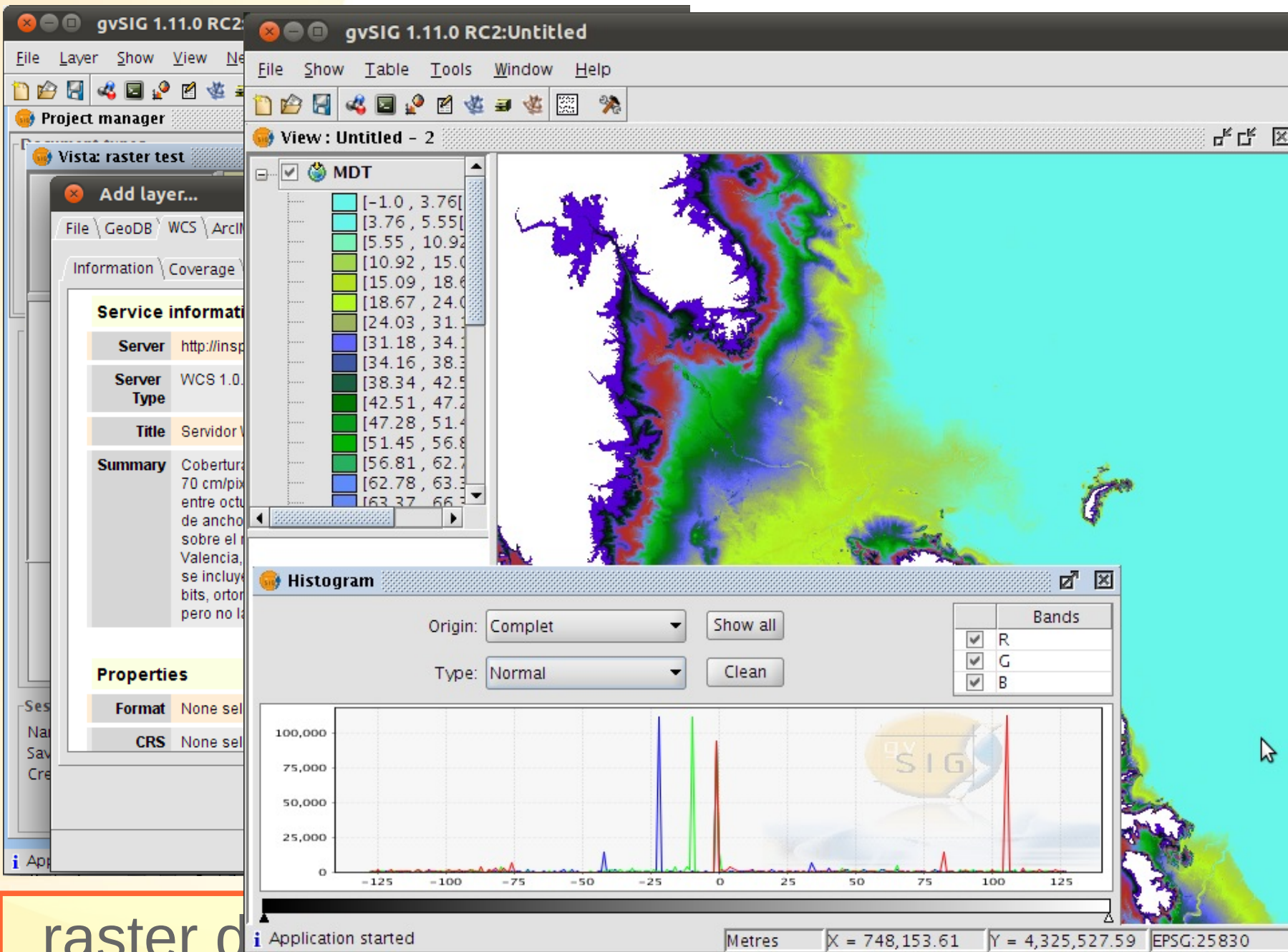


# Raster file formats

- gvSIG uses GDAL (**format list**)
- Most used formats are available
- img, tiff, jpeg 2000, adf, asc, hdr, ...



- Not all formats activated
- Can't test them all
- To support .rik:
  - Ask on mailing lists
  - Provide some test data



The screenshot shows the gvSIG 1.11.0 RC2 interface. The main window displays a raster map titled 'MDT' with a color scale legend. The legend shows 15 color-coded ranges from [-1.0, 3.76] to [63.37, 66.0]. A 'Histogram' window is open in the foreground, showing a graph of pixel counts for three bands (R, G, B). The histogram has a y-axis from 0 to 100,000 and an x-axis from -125 to 125. The 'Origin' is set to 'Completo' and the 'Type' is 'Normal'. A table of bands is visible in the histogram window:

Bands	
<input checked="" type="checkbox"/>	R
<input checked="" type="checkbox"/>	G
<input checked="" type="checkbox"/>	B

The status bar at the bottom indicates 'Application started', 'Metres', and coordinates 'X = 748,153.61', 'Y = 4,325,527.59', and 'EPSG:25830'.

raster data is not just mean

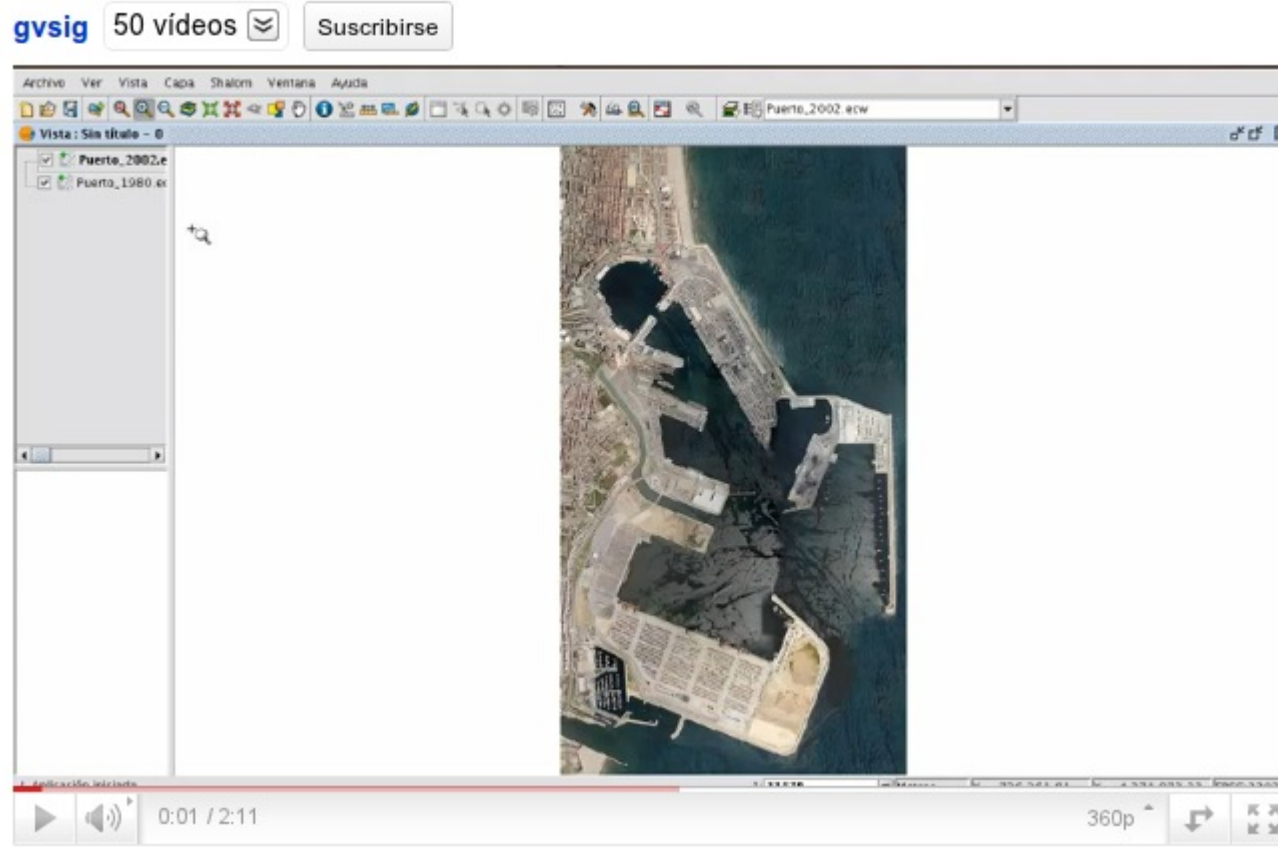
# Basic functionalities

- Raster metadata: size, bands, etc
- Transparency: opacity, per pixel
- Pixel information
- Bands display selection
- Export
- Brightness and contrast
- Basic enhancing
- Scale dependent display



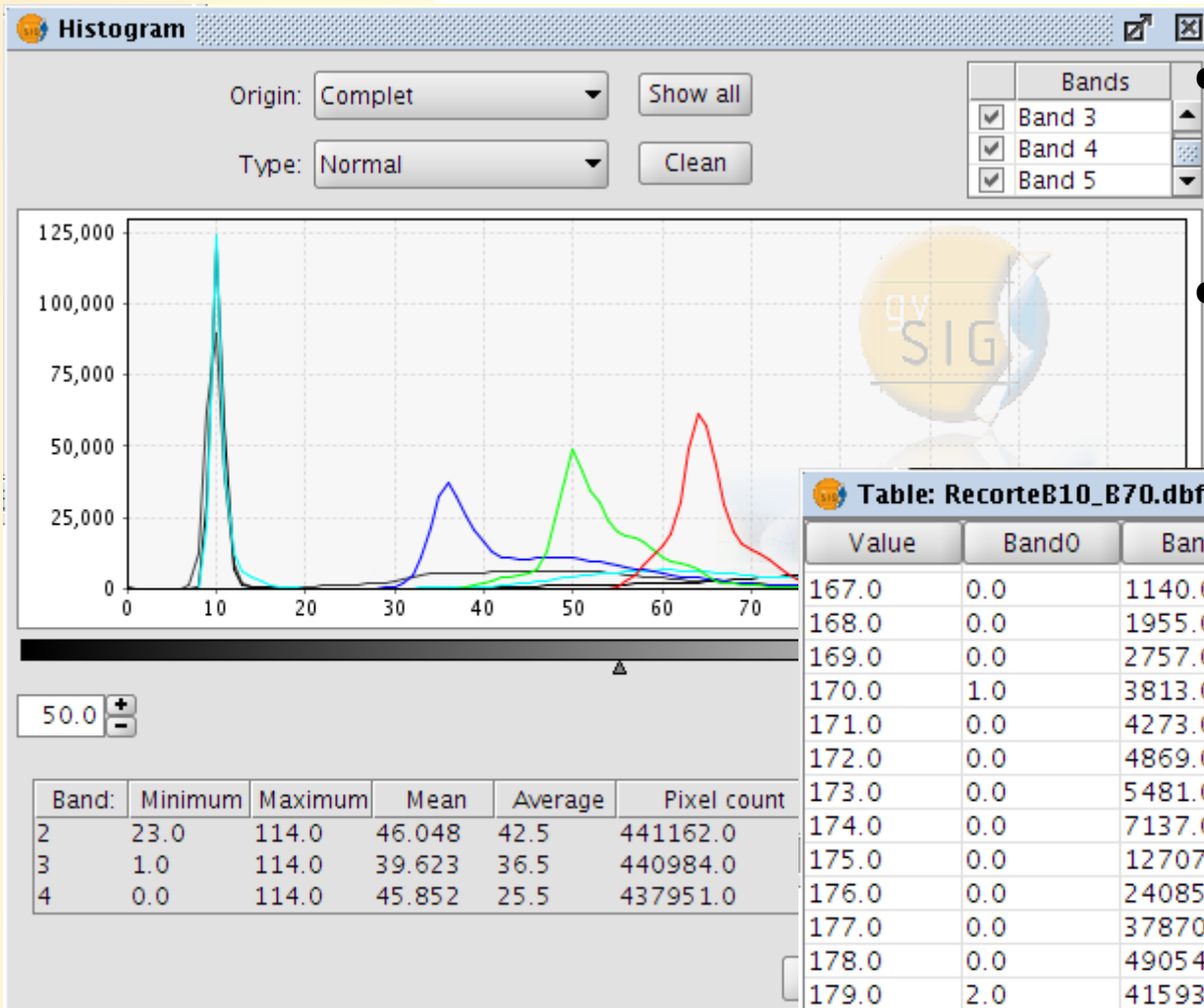
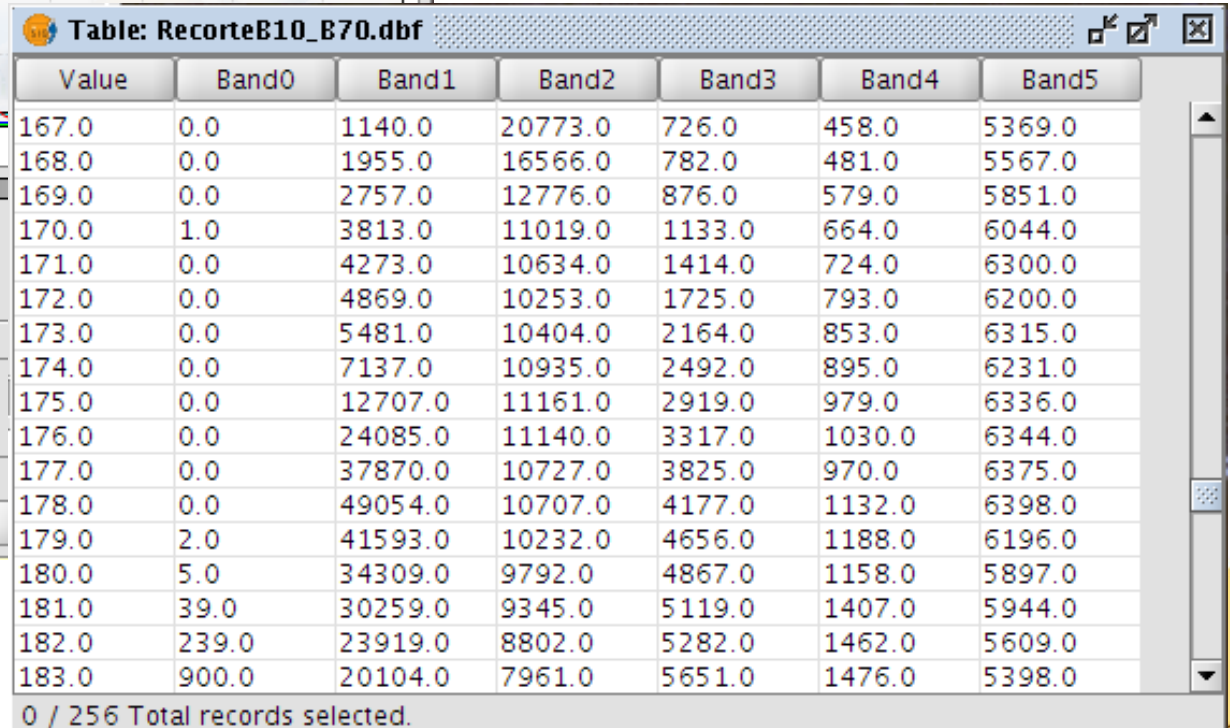
# Basic functionalities

## Basic raster tools in gvSIG



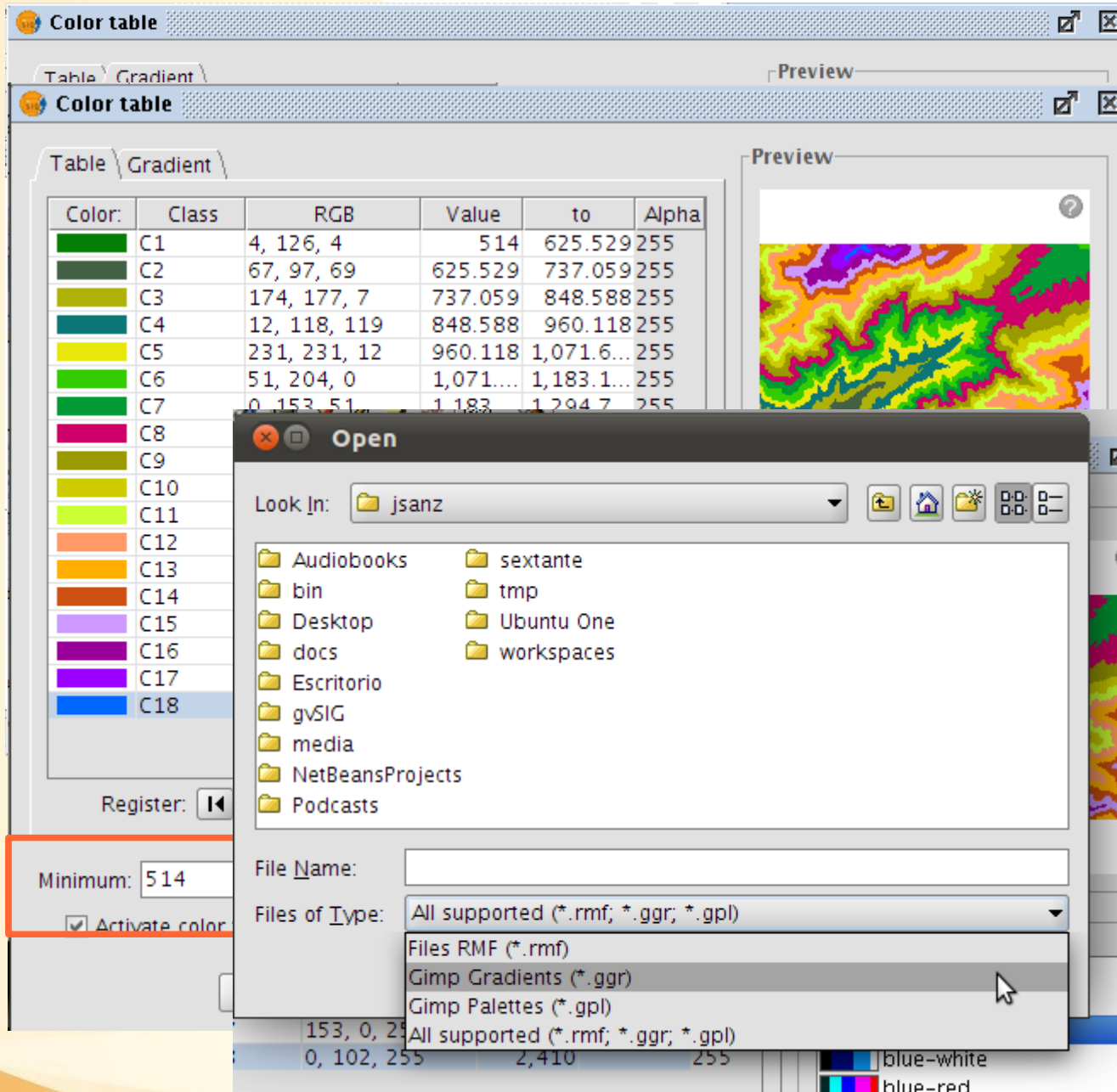
# Histogram

- Raw data or visualized
- Normal, log. or accumulated view
- Export to DBF

Value	Band0	Band1	Band2	Band3	Band4	Band5
167.0	0.0	1140.0	20773.0	726.0	458.0	5369.0
168.0	0.0	1955.0	16566.0	782.0	481.0	5567.0
169.0	0.0	2757.0	12776.0	876.0	579.0	5851.0
170.0	1.0	3813.0	11019.0	1133.0	664.0	6044.0
171.0	0.0	4273.0	10634.0	1414.0	724.0	6300.0
172.0	0.0	4869.0	10253.0	1725.0	793.0	6200.0
173.0	0.0	5481.0	10404.0	2164.0	853.0	6315.0
174.0	0.0	7137.0	10935.0	2492.0	895.0	6231.0
175.0	0.0	12707.0	11161.0	2919.0	979.0	6336.0
176.0	0.0	24085.0	11140.0	3317.0	1030.0	6344.0
177.0	0.0	37870.0	10727.0	3825.0	970.0	6375.0
178.0	0.0	49054.0	10707.0	4177.0	1132.0	6398.0
179.0	2.0	41593.0	10232.0	4656.0	1188.0	6196.0
180.0	5.0	34309.0	9792.0	4867.0	1158.0	5897.0
181.0	39.0	30259.0	9345.0	5119.0	1407.0	5944.0
182.0	239.0	23919.0	8802.0	5282.0	1462.0	5609.0
183.0	900.0	20104.0	7961.0	5651.0	1476.0	5398.0

0 / 256 Total records selected.

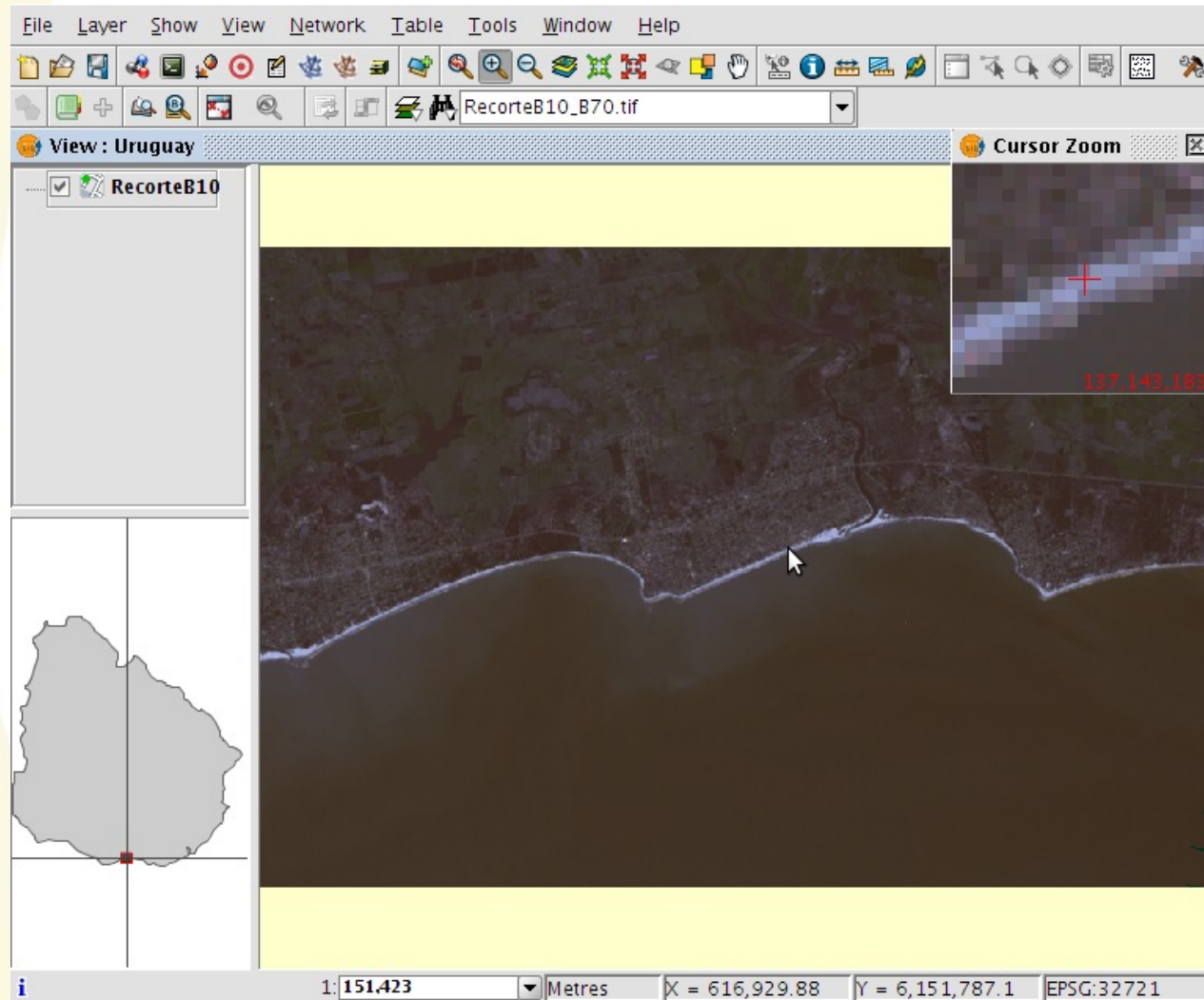


- Gradients
- Look-up tables
- Adapted to the raster pixels values
- GIMP support

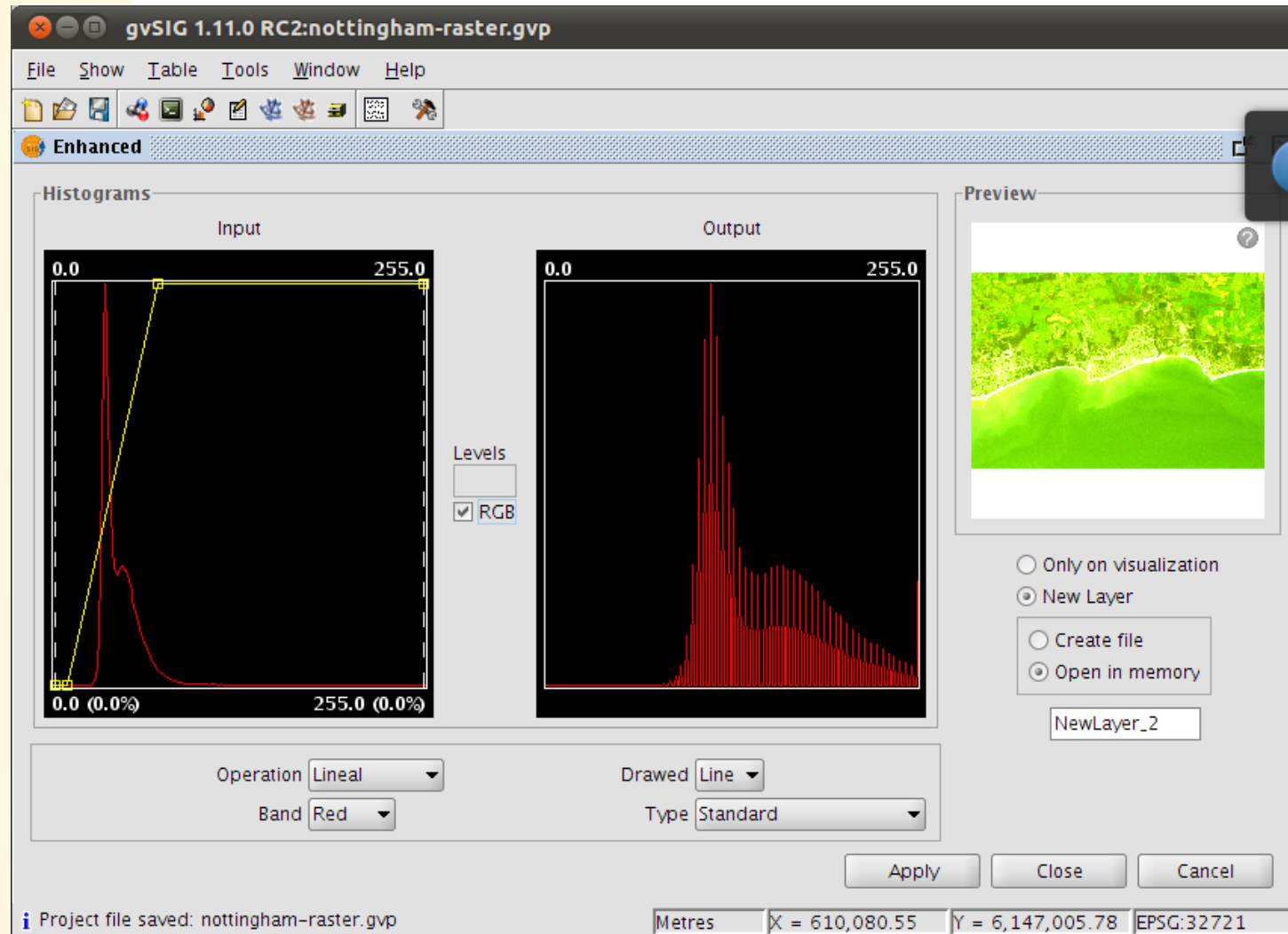




# Analysis view



# Radiometric enhancements



gvSIG 1.11.0 RC2: nottingham-raster.gvp

File Show Table Tools Window Help

Enhanced

Histograms

Input

Output

Levels

RGB

Operation Lineal

Band Red

Drawed Line

Type Standard

Preview

Only on visualization

New Layer

Create file

Open in memory

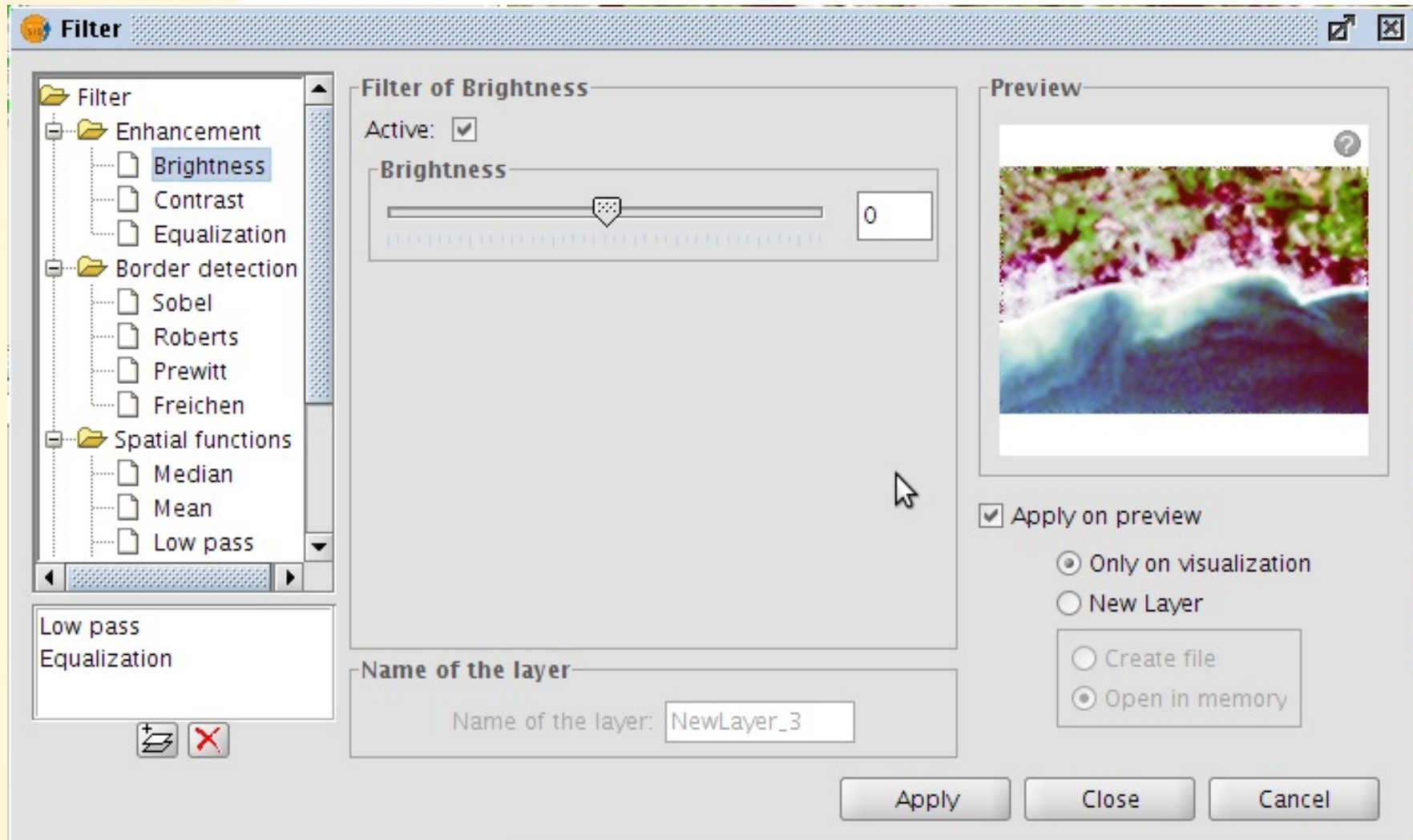
NewLayer\_2

Apply Close Cancel

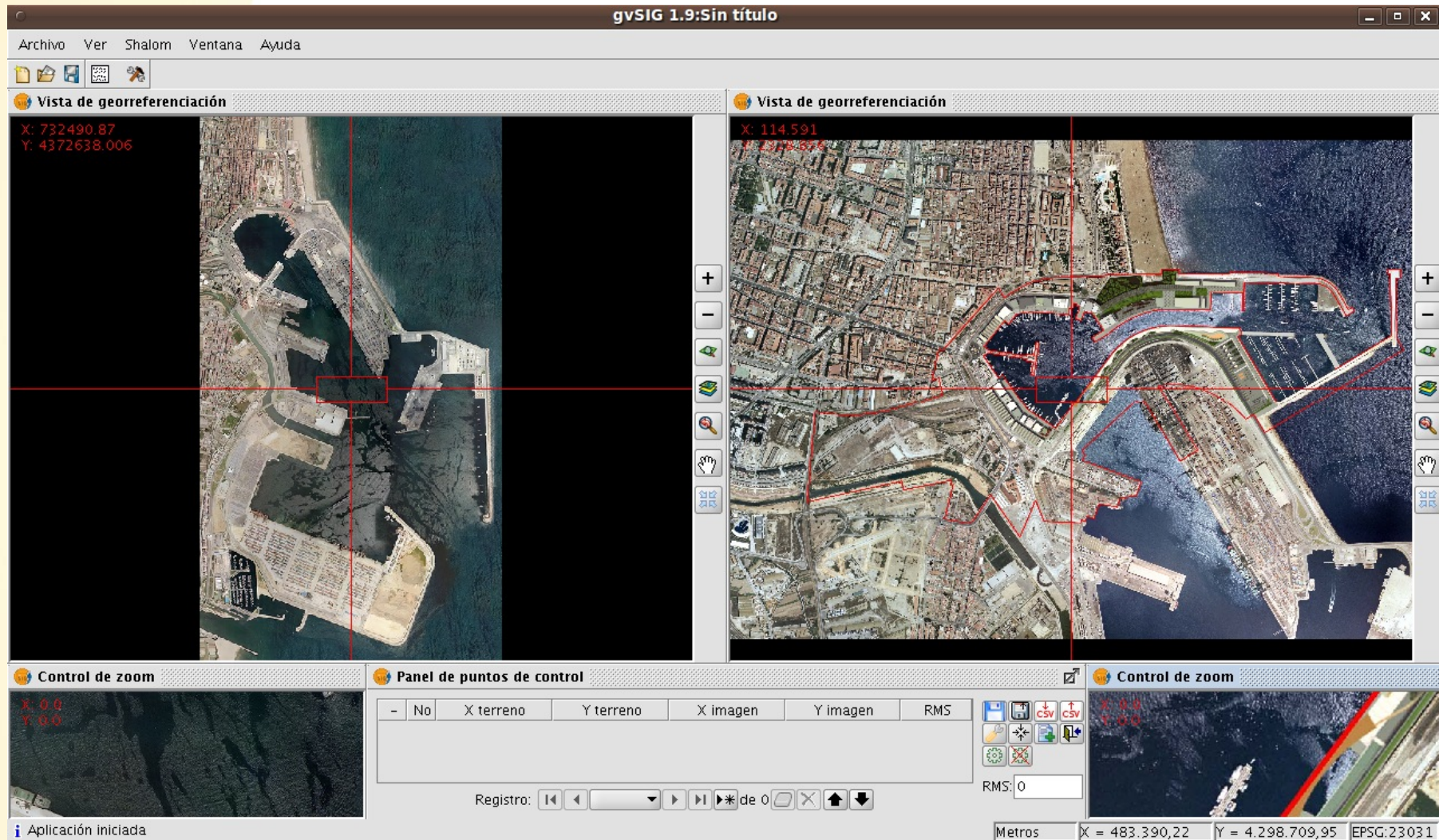
i Project file saved: nottingham-raster.gvp

Metres X = 610,080.55 Y = 6,147,005.78 EPSG:32721

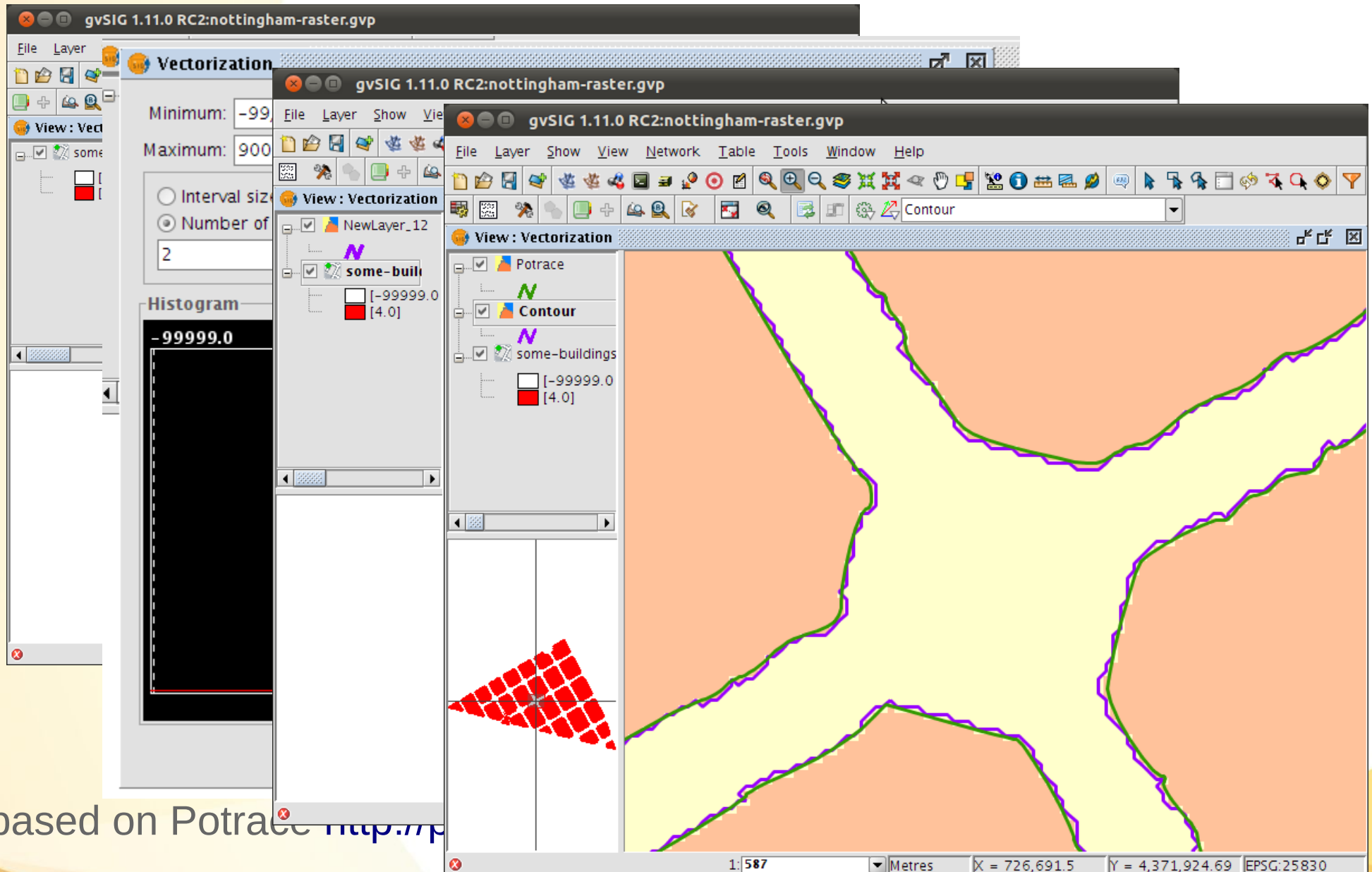
# Filters







# Vectorization



based on Potrace <http://>



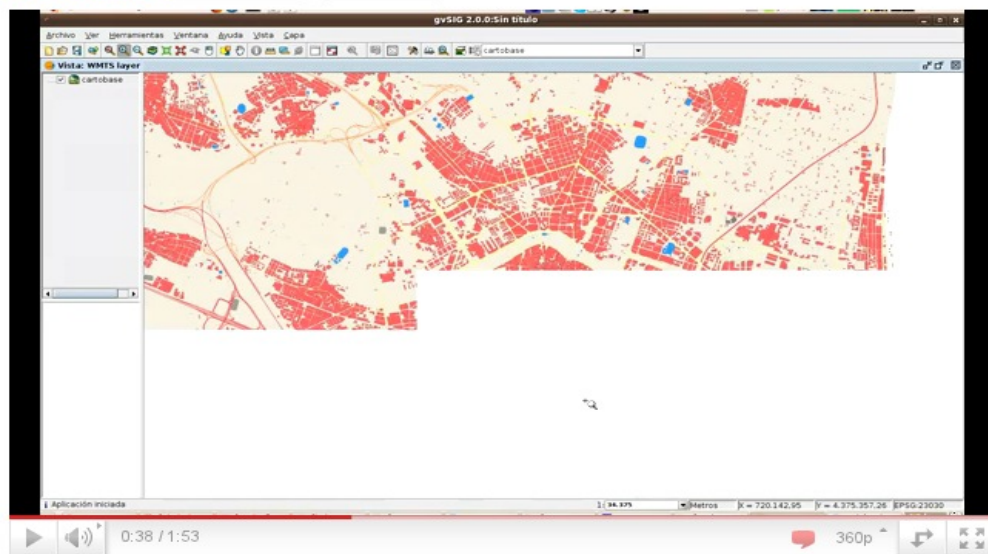
# More raster features

- Raster reprojection
- Overviews generation
- Regions of interest management
- ...
- **Remote Sensing** extension (not stable)
- **SEXTANTE**

<http://sextante.forge.osor.eu/>

## Ciente WMTS para gvSIG

ProdevelopTV 13 vídeos

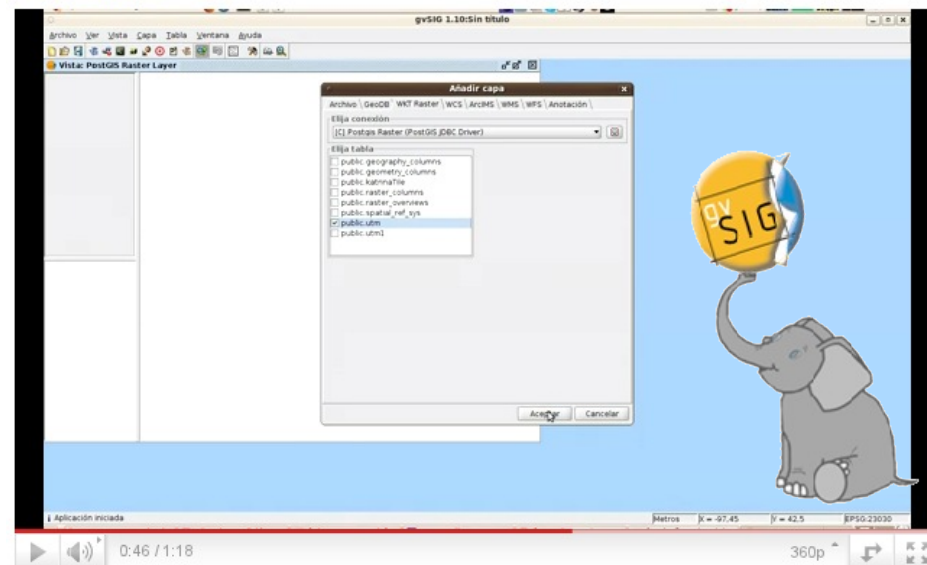


<http://www.youtube.com/watch?v=Rmv0c1EsamE>

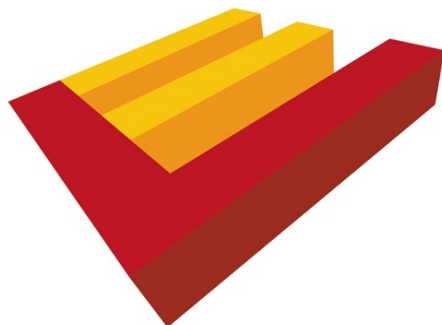


## PostGIS raster en gvSIG

ProdevelopTV 13 vídeos



<http://www.youtube.com/watch?v=AeTpQHdAwuU>



# España Virtual

# thank you!!



# Credits

- Don't support .rik?  
<http://memegenerator.net/instance/8299121>
- GIMP Logo  
<http://userlogos.org/node/1146>
- Kittens by Christian Holmer  
<http://www.flickr.com/photos/crsan/2571204698>



## Attribution-ShareAlike 3.0 Unported

### You are free:



**to Share** — to copy, distribute and transmit the work



**to Remix** — to adapt the work



### Under the following conditions:



**Attribution** — You must attribute the work in the manner specified by the author or licensor (but not in any way that suggests that they endorse you or your use of the work).



**Share Alike** — If you alter, transform, or build upon this work, you may distribute the resulting work only under the same or similar license to this one.