

# gvSIG Mini



**proDEVELOP**  
Integración de tecnologías

Javi Carrasco  
Miguel Montesinos  
Amelia del Rey

**IV Jornadas SIG Libre**

**10, 11 y 12 marzo 2010**

**Girona**

# What is it?

- Map Viewer with GPS functions
- For mobile phones
- Free and Libre (GPL)
- Not an official gvSIG project
- Intended for non professionals
- Uses online services



# Who is doing it?

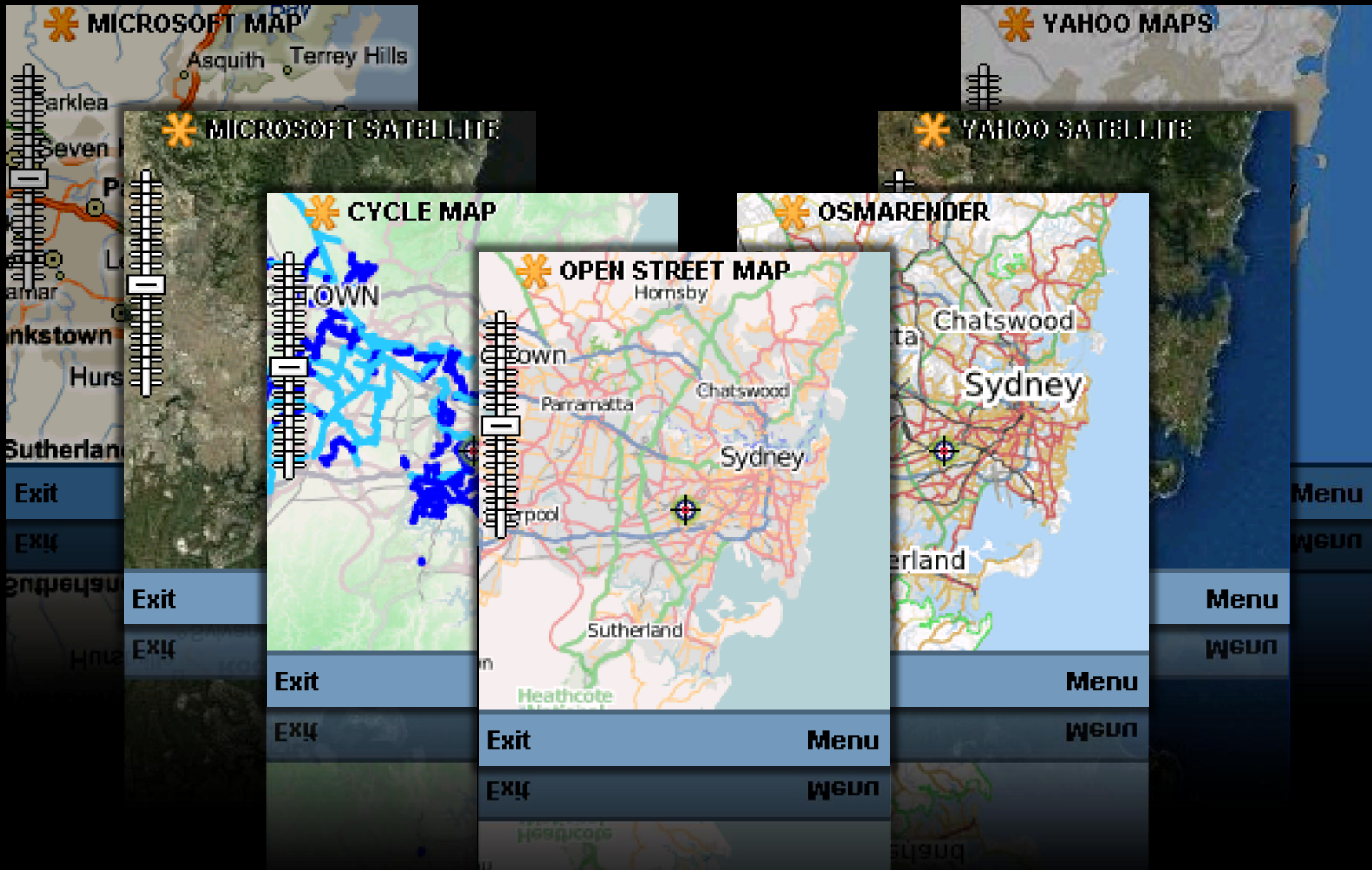


- Spanish company
- 16 years GIS experience
- 70 + employees
- Member of gvSIG Project Steering Committee
- High focus on FOSS4G: Victoria, Cape Town, Sydney
- Members of gvSIG Association
- Members of Sextante Geospatial Services

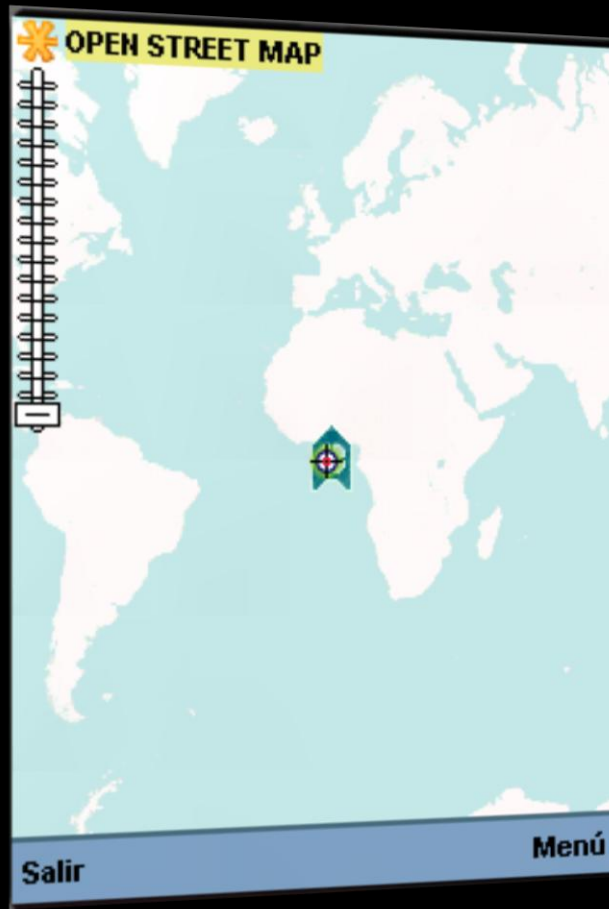
What are its features?



# Map viewer

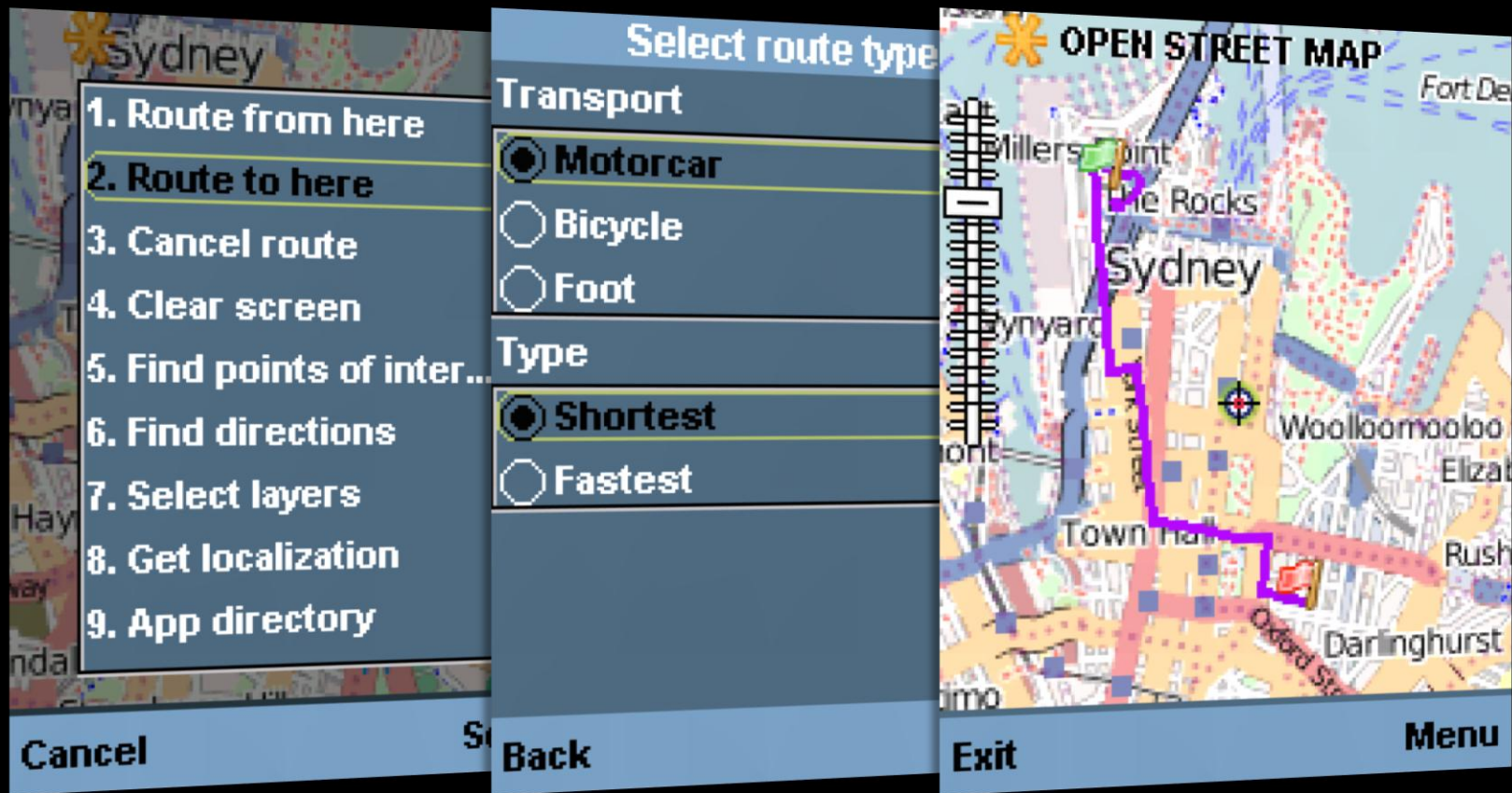


# GPS Positioning



- See my location
- Search close POIs
- Use position for routes

# Route finder (YOURS)





# Address search (Name Finder)

**Name finder**

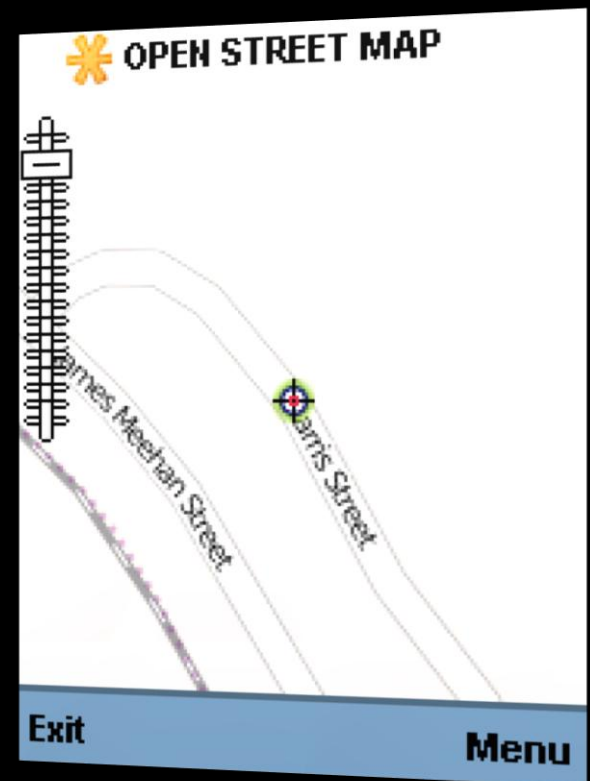
Street or place:  
**Harris**

City:  
**Sydney**

State:  
**Australia**

**Back** **Menu**

- Harris, Sydney, Australia**
- Harris Street**  
Australia, NSW, New South Wales
  - Harris Street  
road Harris Street found abo...
  - Harris Place  
street Harris Place found ab...
  - Harris Street  
street Harris Street found le...
  - Harris Street  
street Harris Street found a
- Back** **Menu**

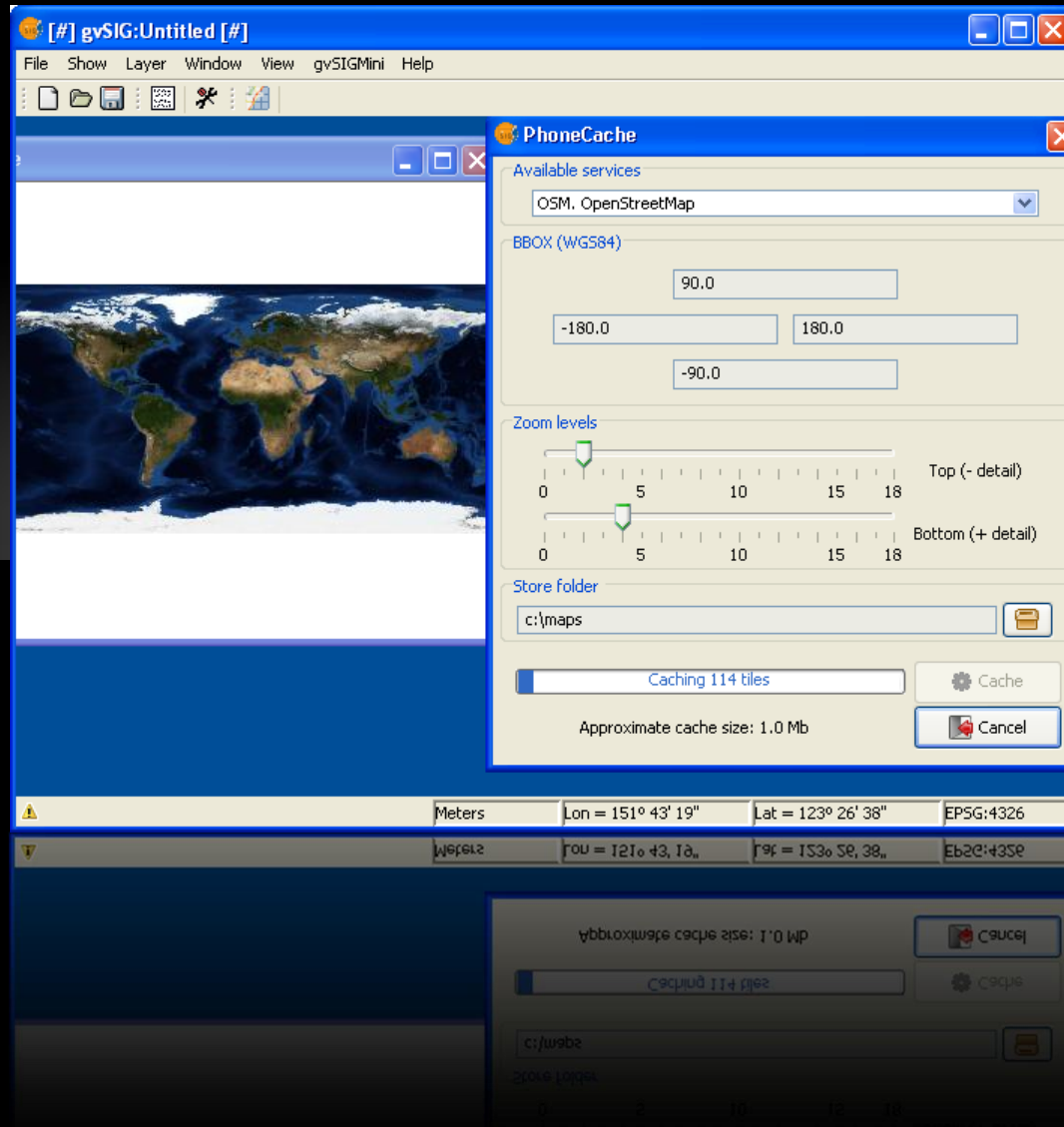


# POI Search (Name Finder)

The image displays three sequential screenshots of a mobile application's POI search interface:

- First Screenshot (Left):** Titled "Name finder", it features a checked option "Near from map center" and a search input field containing the text "hotel". The bottom navigation bar includes "Back" and "Menu" buttons.
- Second Screenshot (Middle):** Shows search results for "hotel near -33.87,151.20". The list includes "Central Park Hotel", "Park Hotel found about 1km s", "Edinburgh Castle Hotel", "pub Edinburgh Castle Hotel i...", "Star Hotel", "pub Star Hotel in Australia, N...", "Sir John Young Hotel", "pub Sir John Young Hotel fo...", "Criterion Hotel", and "pub Criterion Hotel found le". The bottom navigation bar includes "Back" and "Menu" buttons.
- Third Screenshot (Right):** Displays a map from "OPEN STREET MAP" with several red location markers. A green marker is selected, corresponding to the "Hilton Hotel" in the list below. The map labels include "Wemyss", "Martin Place", "King Street", "City Centre", "Town Hall", "Museum", and "College Street". The bottom navigation bar includes "Exit" and "Menu" buttons.

# Phone Cache (Tiles downloader)



# What are the Requirements?

- Standard phones
  - Java CLDC 1.1/MIDP 2.0 enabled phone
  - (Optional) GPS and JSR 179
  - (Optional) Network connectivity
  - (Optional) JSR 75: Filesystem access
- Android
  - (Optional) Network connectivity
  - (Optional) GPS

# How is it being done?

- Tiles + vector routes + POIs
- LWUIT for enhanced user experience
- Multithread
- Persistent cache
- Based in OSM services
- Supported SRS: "EPSG:4\*" "EPSG:230\*" "EPSG:326\*" "EPSG:327\*" "EPSG:275\*" "EPSG:27700"



# Where to get it?

- From PC

[gvsigmini.org](http://gvsigmini.org)

- From phone

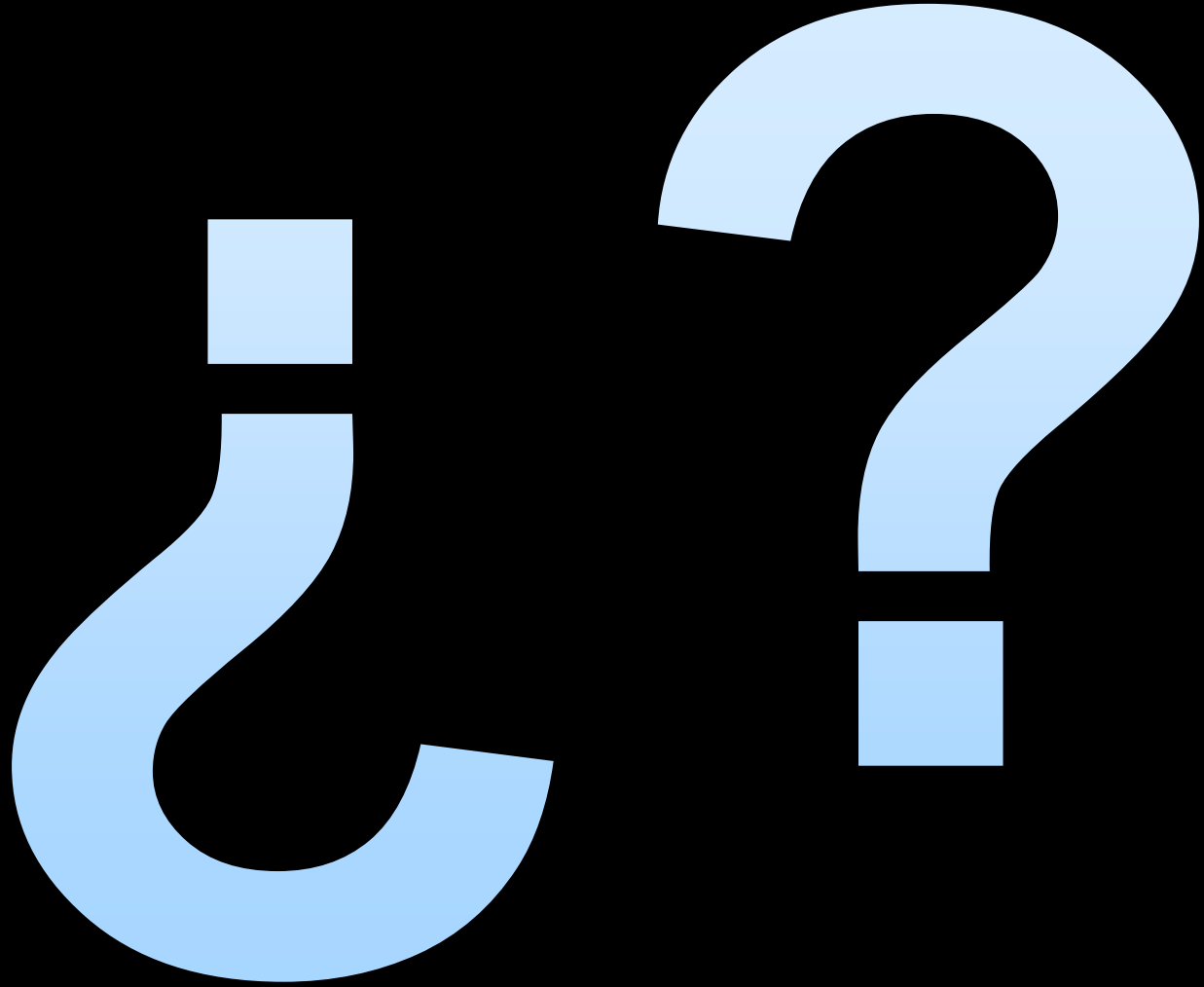
[m.gvsigmini.org](http://m.gvsigmini.org)

# What's next?

- Personal POIs storage
- Tracklogs and waypoints storage
- Disconnected address search
- Integration with social applications
- Unify Android and CLDC code

Collaborations are wellcome

Video



Thank You

[jcarrasco@prodevelop.es](mailto:jcarrasco@prodevelop.es)

