



gvSIG 1.10 and gvSIG 1.11 new features

Mario Carrera

Language and communication manager - gvSIG Association

mcarrera@gvsig.com

Asociación gvSIG
www.gvsig.com

**Quarte Giornate Italiane
di gvSIG**



gvSIG 1.10 new features

- gvSIG 1.9 bug fixes
- Windows Vista and Windows 7 compatibility
- Binaries compilation for JVM 1.6 (with JVM 1.5 compatibility)
- Sextante 0.6 extension integration (GRASS 6.4 interface included)
- NavTable extension integration (latest version)
- Pie and bar chart legend
- Relative paths support

gvSIG 1.10 new features

gvSIG 1.9 bug fixes

gvSIG 1.10 RC1 (06-10-2010)

- [Integer table fields are switched to double type](#)
- [Mapa. Error al exportar un mapa con etiquetado avanzado.](#)
- [en: Encoding in preferences is not used when creating a new layer. es:El encoding establecido en preferencias no se mantiene para capas nuevas](#)
- [Saving a project with WMS layers \(maintaining layer structure\) gives a console and doesn't save the WMS](#)
- [Error on KML extent](#)
- [Exception when loading a qvp with WMS layers without internet access.](#)
- [gvSIG fails to load 3D polylines with M coordinate](#)
- [Wrong visualization of the SRS in the status bar.](#)
- [The version on the About window is 1.9 and should be 1.10.](#)
- [Wrong behavior of the old version warning advise when starting gvSIG.](#)
- [Differences on the default encoding](#)
- [Primera pantalla del instalador siempre en castellano](#)
- [Support to have several gvSIG with different preferences.](#)
- [Better labelling \(just a little\)](#)
- [Allow andami to add JMenuBar to dialogs.](#)
- [Persistence error in layer loading order](#)
- [Add ChartLegend extension in the gvSIG 1.10 package.](#)
- [GvSIG throws a Java typecast error when saving table edits on integer fields](#)
- [Make error message translatable](#)
- [Introduces configurable user settings folder location](#)
- [Add some robustness to XML project file parsing](#)
- [Fix browsing for default symbology folder](#)
- [Unable to export to postgis when a field called gid already exists](#)
- [PostGIS Driver should be case sensitive](#)
- [Don't allow user to leave blank the name of a layer to export](#)
- [Sextante algorithms help documents missing.](#)
- [DGN files not completely drawn in gvSIG](#)
- [gvSIG can't load images with signed pixel size](#)
- [Error al copiar capas en Rutas Relativas](#)
- [Error Console. Label a layer with space in the name of the field](#)
- [en: inserting/moving a view into a map, the screen gets gray es: al insertar/mover una vista dentro de un mapa la pantalla se pone gris](#)
- [Buffer error with point type layer](#)
- [Persistence error trying to open a qvp saved with gvSIG 1.10_1260](#)

gvSIG 1.10 new features

Windows Vista and Windows 7 compatibility

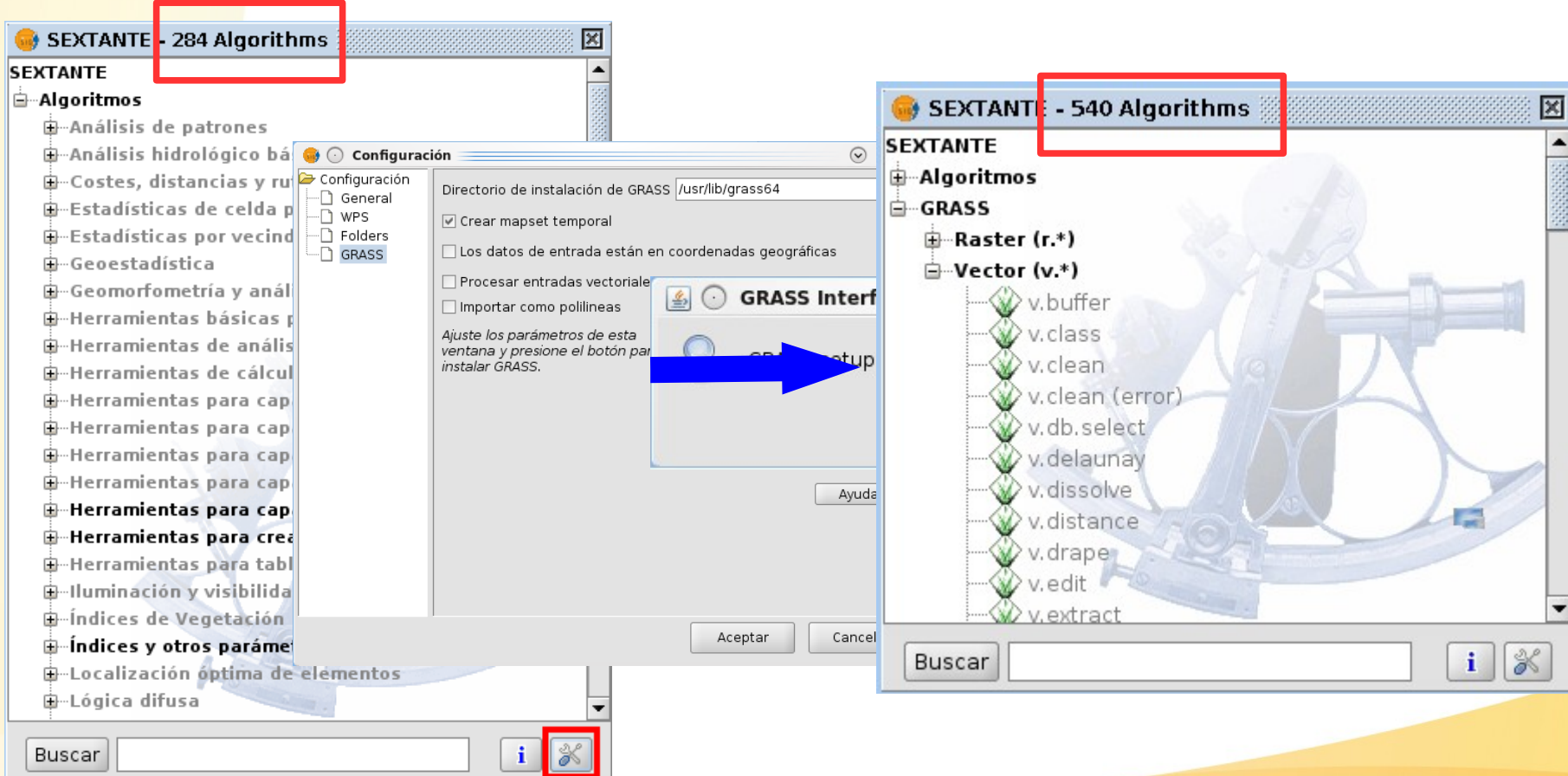
- Problem with raster libraries fixed

Binaries compilation for JVM 1.6 (with JVM 1.5 compatibility)

- Improvements in gvSIG with the new JVM

gvSIG 1.10 new features

Sextante 0.6 extension integration (GRASS 6.4 interface included)



gvSIG 1.10 new features

NavTable extension integration (latest version)

- Management of **alphanumeric data** in a comfortable way.
- It represents **each element in a row**, separating the attributes by columns.
- It is possible to navigate through the alphanumeric and geographical data by means of buttons.
- Its central panel can be exchanged with **personalized forms** in a easy way.



gvSIG 1.10 new features

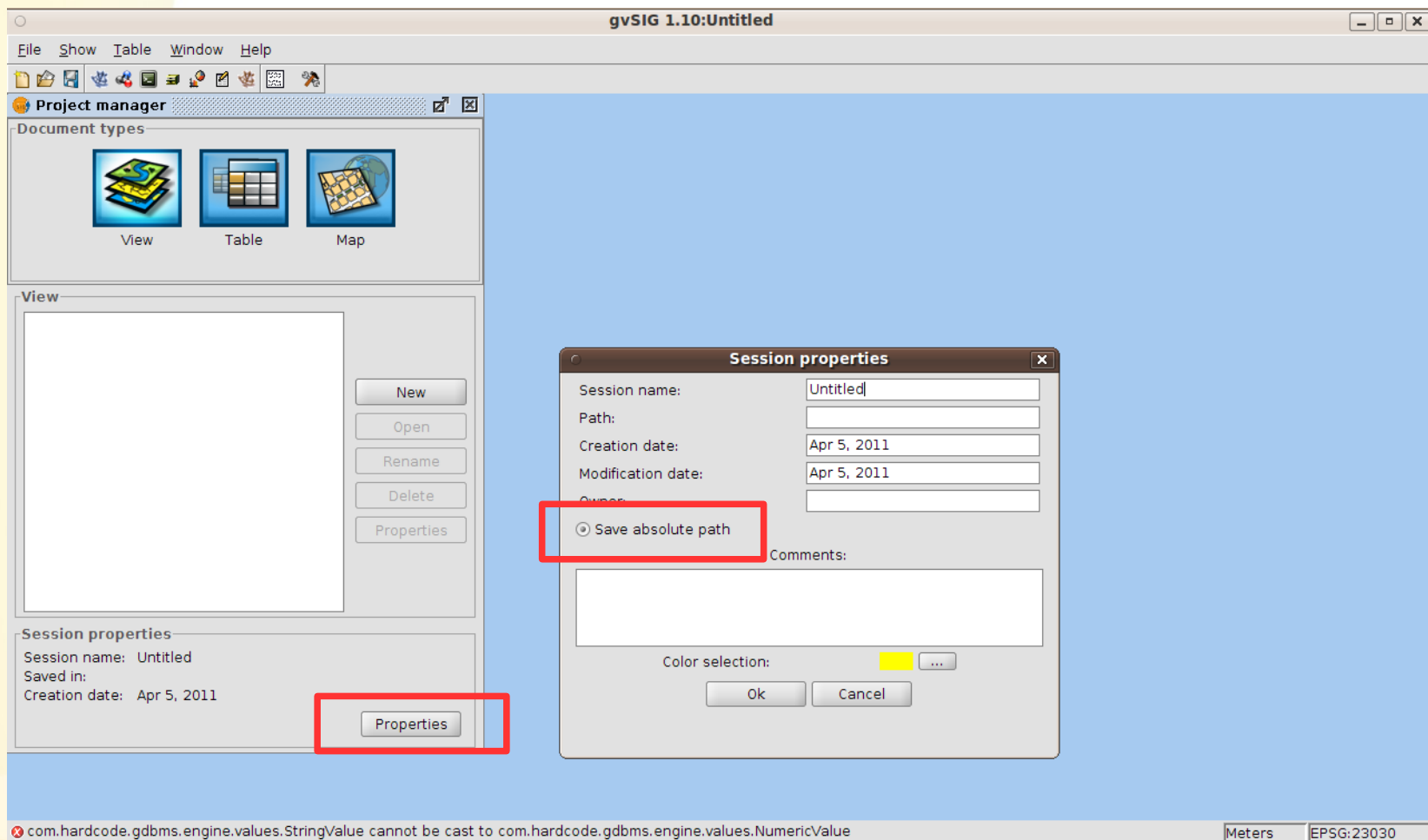
Pie and bar chart legend

- Several attributes can be shown at the same time.



gvSIG 1.10 new features

Relative paths support



gvSIG 1.11 new features

- New features sponsored by Landeshauptstadt München, Referat für Gesundheit und Umwelt.
 - Copy/paste geometries between layers.
 - Lateral buffer.
 - Split line in equidistant sections.
 - Add consecutive numbers to attribute tables.
 - Find duplicates records in attribute tables.
- Add-ons installer (beta).
- NavTable new version.
- gvSIG user manual included (available in the help menu).
- Bugfixes contributed by the developers community.

gvSIG 1.11 new features

Copy/paste geometries between layers

- It allows to copy elements from a layer to other one in editing mode.

Lateral buffer

- Buffer tool for line layers, but only to one side.



Split line in equidistant sections

- It allows to cut the lines of a concrete layer in sections.

gvSIG 1.11 new features

Add consecutive numbers to attribute tables

- It can be done from the field calculator.



Find duplicates records in attribute tables

- Duplicate records on a field are selected with this tool.

gvSIG 1.11 new features

Add-ons installer (beta)



- It allows to add new extensions from gvSIG directly.

NavTable new version.

- Several bugs have been fixed in the extension

gvSIG 1.11 new features

gvSIG user manual included

- It's available in the help menu.



gvSIG 1.11 new features

Bugfixes contributed by the developers community

gvSIG 1.11 RC2 (01-04-2011)

The following errors have been corrected:

- 🌐 properties files to upload to gvSIG 1.11
- 🌐 extension
- 🌐 with the sextante exte
- 🌐 starts with "urn:ogc:d
- 🌐 image by using &am
- 🌐 on.
- 🌐 "Capas&an
- 🌐 se
- 🌐 CompuestaPanelListe
- 🌐 Problem parsing WGS 1984 in Geoserver
- 🌐 Changes in jgdal 0.9.2 are not committed
- 🌐 Numeric fields are readed badly
- 🌐 Connection losed sometimes and cannot recovery
- 🌐 Oracle Spatial: SRS for South America cause errors (EPS)
- 🌐 OutOfMemory when getting a raster Buffer from big raster
- 🌐 Error in Symbol library, basic, symbol.
- 🌐 Undo Icon incorrect in maps
- 🌐 Cadena de versión en el "acerca de" la aplicación.

Features/Bugs addressed in CodeSprint

A [wiki](#) was created where each person could add the bugs and the features that he/she wanted to correct during CodeSprint. The list was edited the same day of Code Sprint, so that as the bug was corrected, it was updated. The definitive list, grouped by feature is as follows:

Regarding the installer:

- Feature: backport of the installer of gvSIG 2.0 plugins in the 1.11 line [[jjdkicero](#)]
- Delete the copy of the libraries and archives of the license of the jai in the installer, as this dependence has been deleted. [[jiones](#)] **FIXED**
- Correctly install the direct access icons to gvSIG Linux. [[jiones](#)] **ALMOST FIXED**, the only function left to finish is to write the script that detects the desktop. [[jjdkicero](#)]
- Change the lib version that is provided for Linux, it is obsolete. [[jiones](#)] **FIXED**. Update the library to the 1.2.3.3 version.

Regarding the ToC:

- Small Change: Delete the extension (.shp, .fil,) when a layer is loaded. [[nachouve](#)] **FIXED**.
- Revise and integrate the existing patches in the OSR [[amaneiro](#)]:
 - http://forge.osor.eu/tracker/?func=detail&aid=14605&group_id=89&aid=732

Regarding the Shapefiles:

- Implement the writing of M values (for 4D shapefiles) [[lba83n](#)]
- Manage the editing of 4D shapefiles correctly (add vertex should initialize Z to 0 and M as the weighted average between previous and next vertex, explode should not remove the feature from the layer, insert multiline/line/arc etc with 4D if the layer allow it, etc) [[lba83n](#)]

Regarding the Legend:

- Copy the styles quickly between the layers (this requires speaking about how this can be done internally, to be able to copy styles between different geometries, etc.. [[nachouve](#)] (This requires rethinking the architecture.)
- Stop re-coloring of the vectorial layers when the cancel button in the legend is pushed, and review all of the items that have been re-colored to see if anything has been colored unnecessarily. [[jiones](#)] **FIXED**. The error was in: `extDockingSkin`
- Stop creating a new query in the data base when changing the legend. (I think this was occurring). [[nachouve](#)]

Regarding WMS:

- SmallChange: automatically select the view projection at WMS projection selector (and probably also a preferred image format) [[xurxosanz](#)]
- Use of the scale_hint parameter [[jones](#)] **FIXED**. Using MinScale Denominator and MaxScale Denominator
- http://forge.osor.eu/tracker/index.php?func=detail&aid=14856&group_id=89&aid=732
- GetCapabilities requests in a thread. Extensible to WCS [[rbrodin](#)]
- Every WMS download by libRemoteServices launches two threads but only one dies. Extensible to WCS. [[rbrodin](#)] **FIXED by rbrodin**
- Caching in the zones that are continually being requested?.
- At least what we have on the screen should be cached, as currently when a layer is activated or deactivated the WMS layers that are active are downloaded again (without changing anything in these layers).

Regarding the WCS:

- Revise and integrate the existing patches in the OSOR [[amaneiro](#)]:
- http://forge.osor.eu/tracker/?func=detail&aid=14735&group_id=89&aid=732

Regarding the WCS:

- Bug: the latest version of the geoserver isn't working. [[oscarfontes](#)] **FIXED by [a href="#">jhigon] ticket #14861**



Grazie per l'attenzione

Mario Carrera

Language and communication manager – gvSIG Association

mcarrera@gvsig.com



Attribution-ShareAlike 3.0 Unported

You are free:



to Share — to copy, distribute and transmit the work



to Remix — to adapt the work



Under the following conditions:



Attribution — You must attribute the work in the manner specified by the author or licensor (but not in any way that suggests that they endorse you or your use of the work).



Share Alike — If you alter, transform, or build upon this work, you may distribute the resulting work only under the same or similar license to this one.