



# gvSIG Use Cases

Alvaro Anguix  
aanguix@gvsig.com

Asociación gvSIG  
www.gvsig.com

*Quarte Giornate Italiane  
di gvSIG*



# Case Studies

---

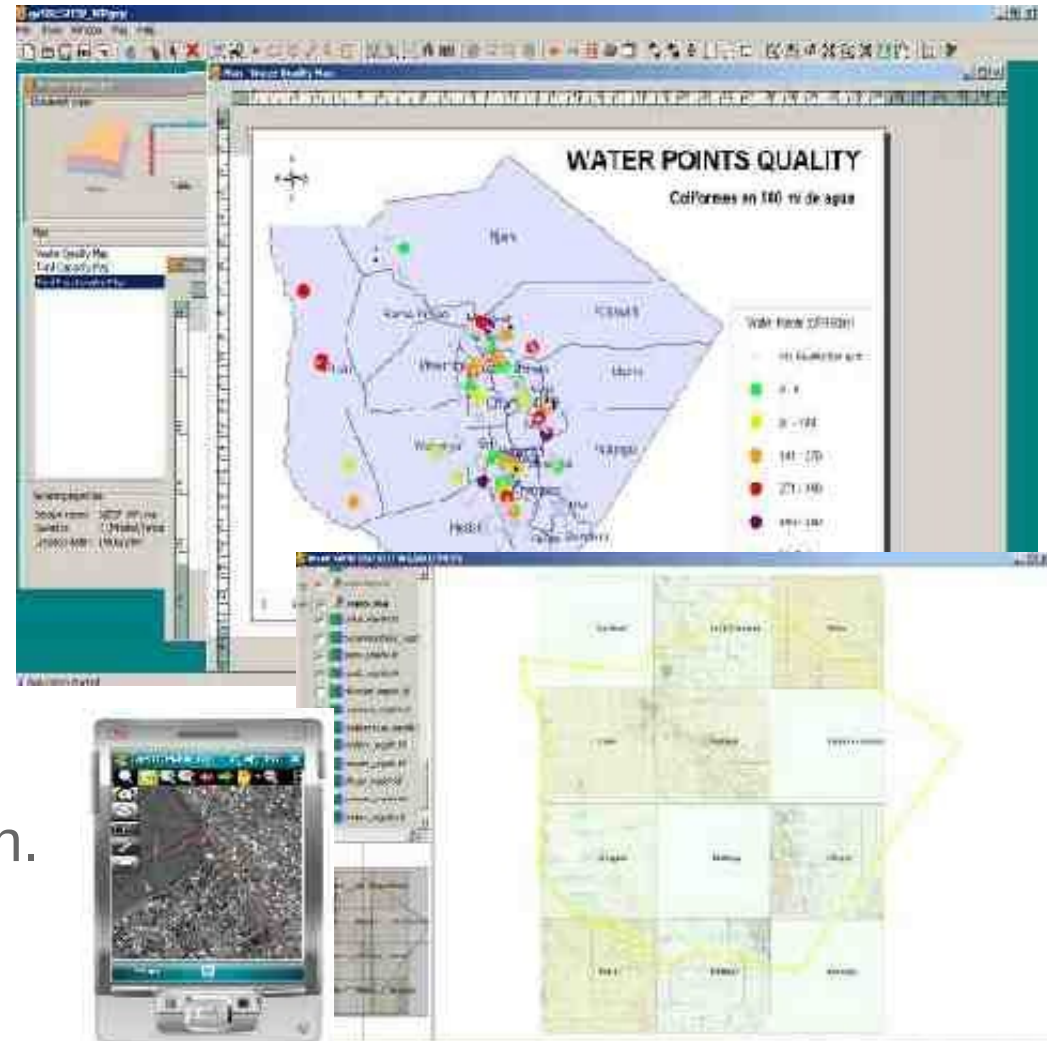


<http://outreach.gvsig.org/case-studies>



# Africa

- **Tanzania:** GIS of hydro-sanitary program of Same district. gvSIG Desktop.
- **Uganda:** management of water networks. gvSIG Desktop
- **Gambia:** Data collection process. World Food Programme. gvSIG Mobile.
- **South Africa:** gvSIG in Education. Collaborator company.
- Users in Tunisia, Egypt, Morocco...



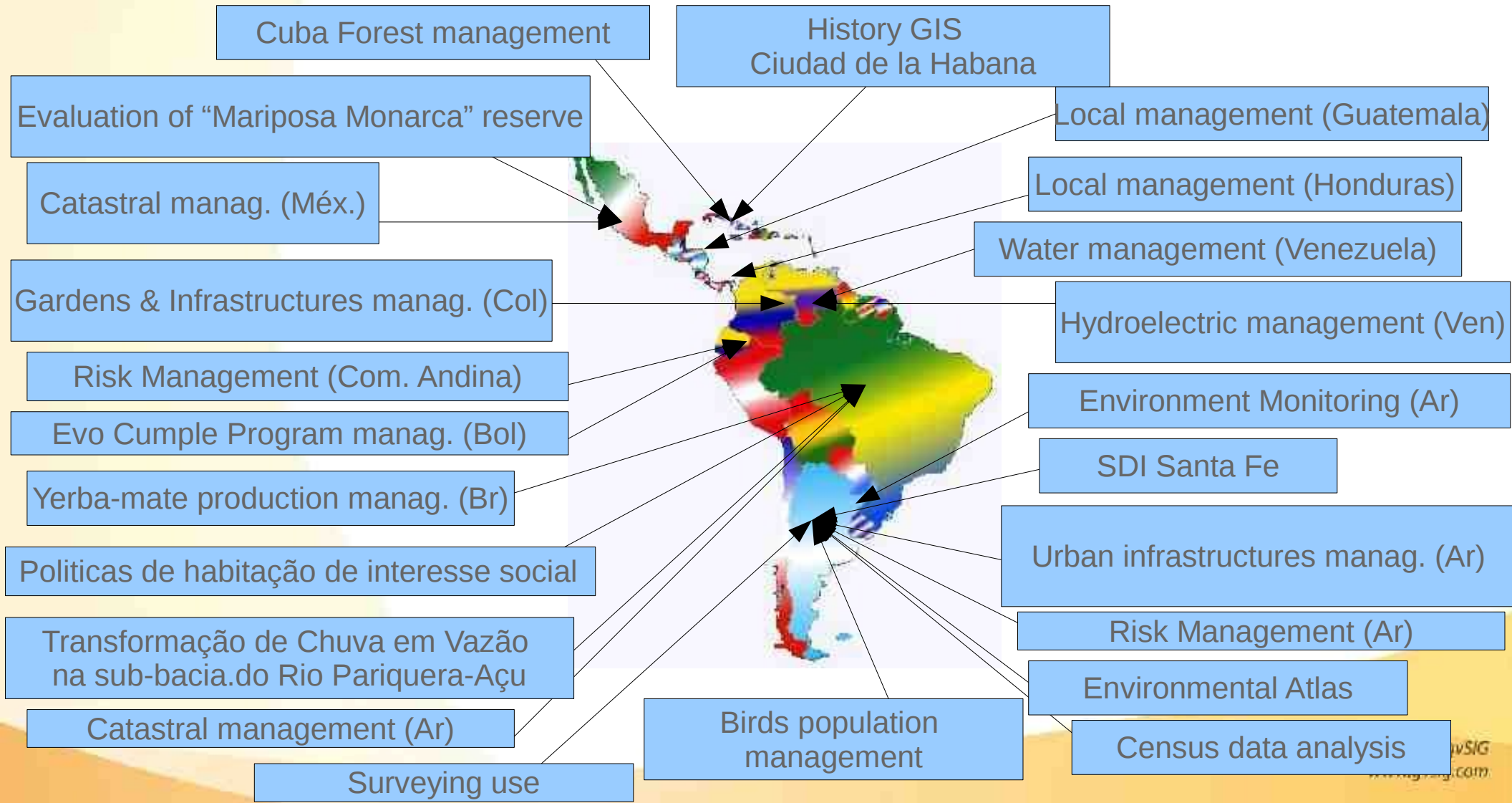


# Latin America

- **Honduras, El Salvador:** gvSIG Fonsagua. GIS application to manage water and sanitation programs. ISF.
- **Venezuela:** Spatial Data Infrastructure of Venezuela
- **Uruguay:** “Plan Ceibal” One Laptop Per Child.
- **Brasil:** forest management.
- Users around Latin America...



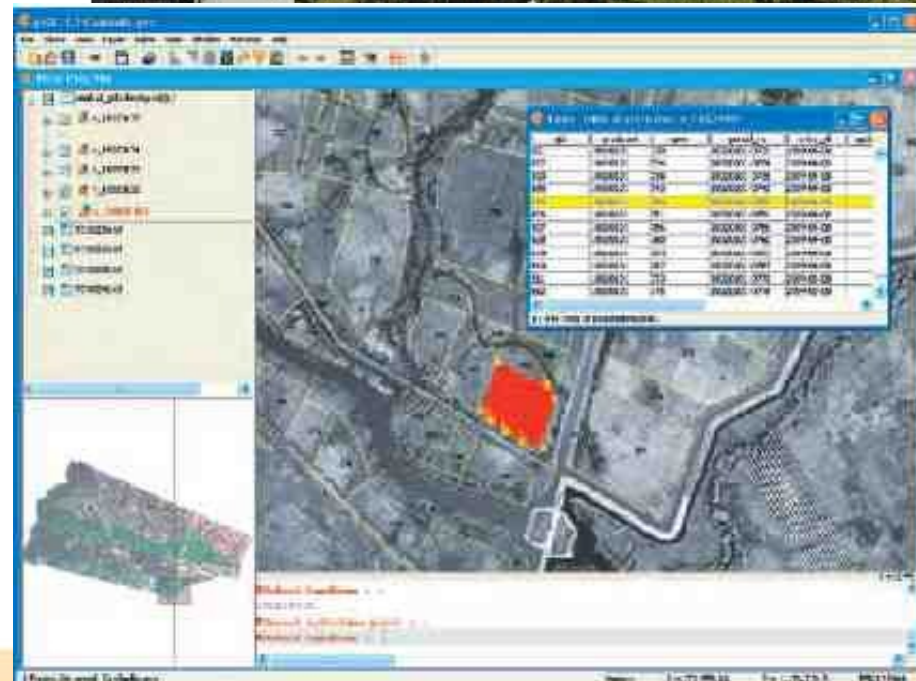
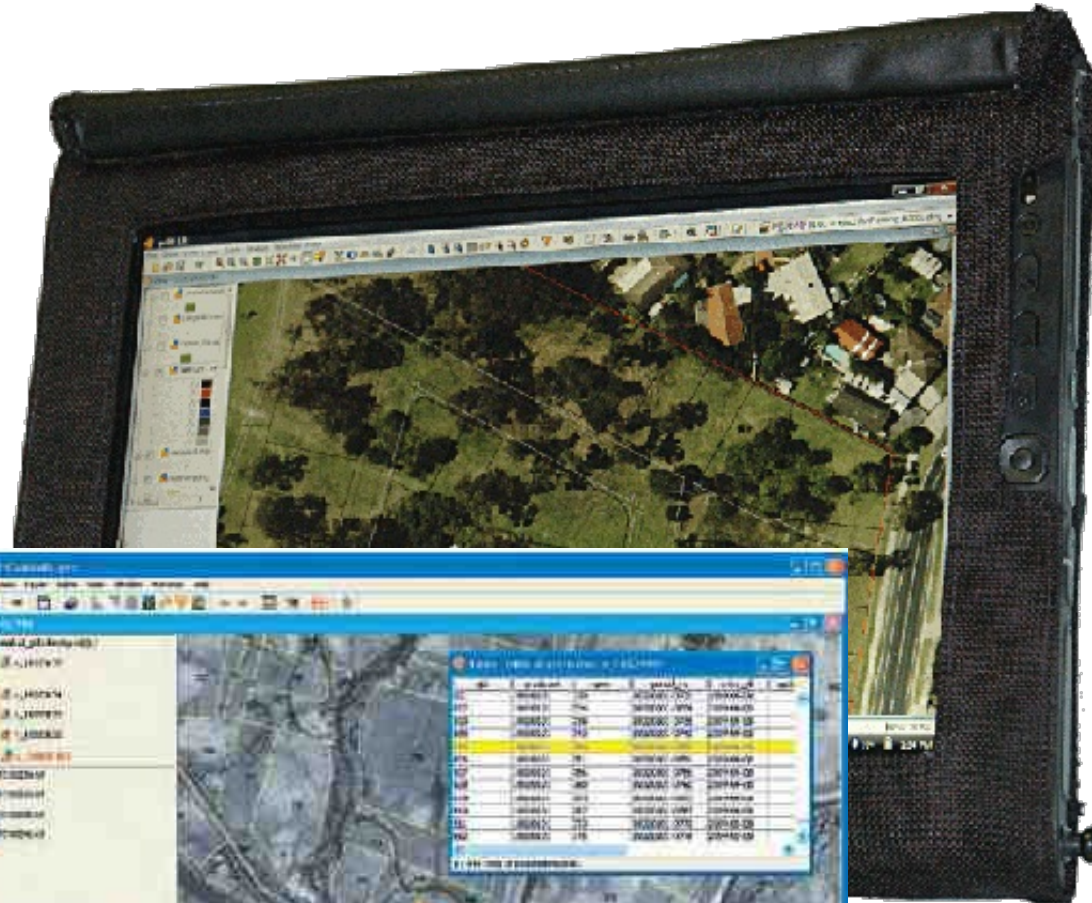
# Latin American and Caribbean gvSIG Conference





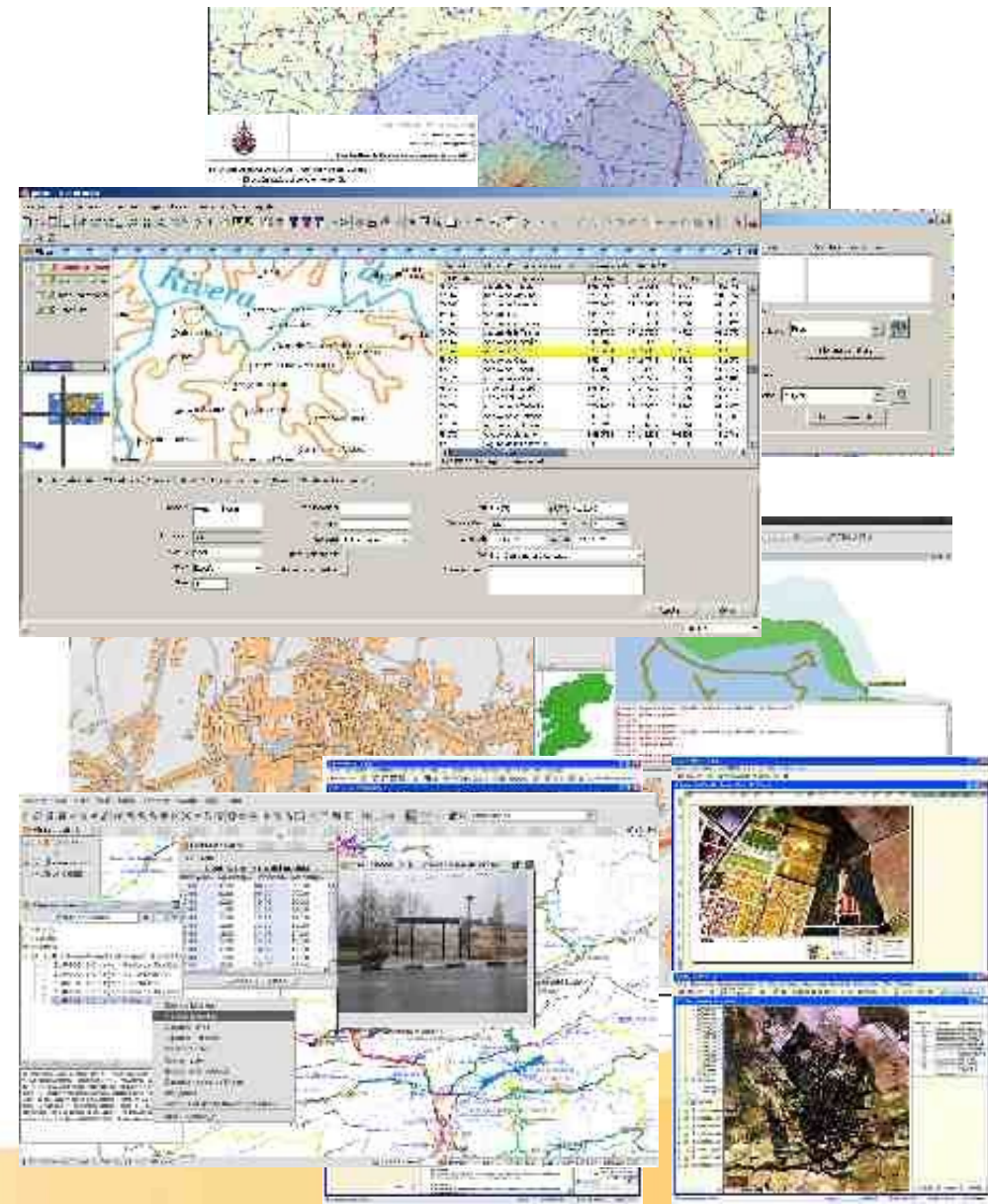
## Asia & Oceania

- **Australia:** Enviromental uses
- **New Zealand:** Electric company
- **Japan:** gvSIG Training
- **Cambodia:** Catastral management.
- Users in India, China, South Korea,....

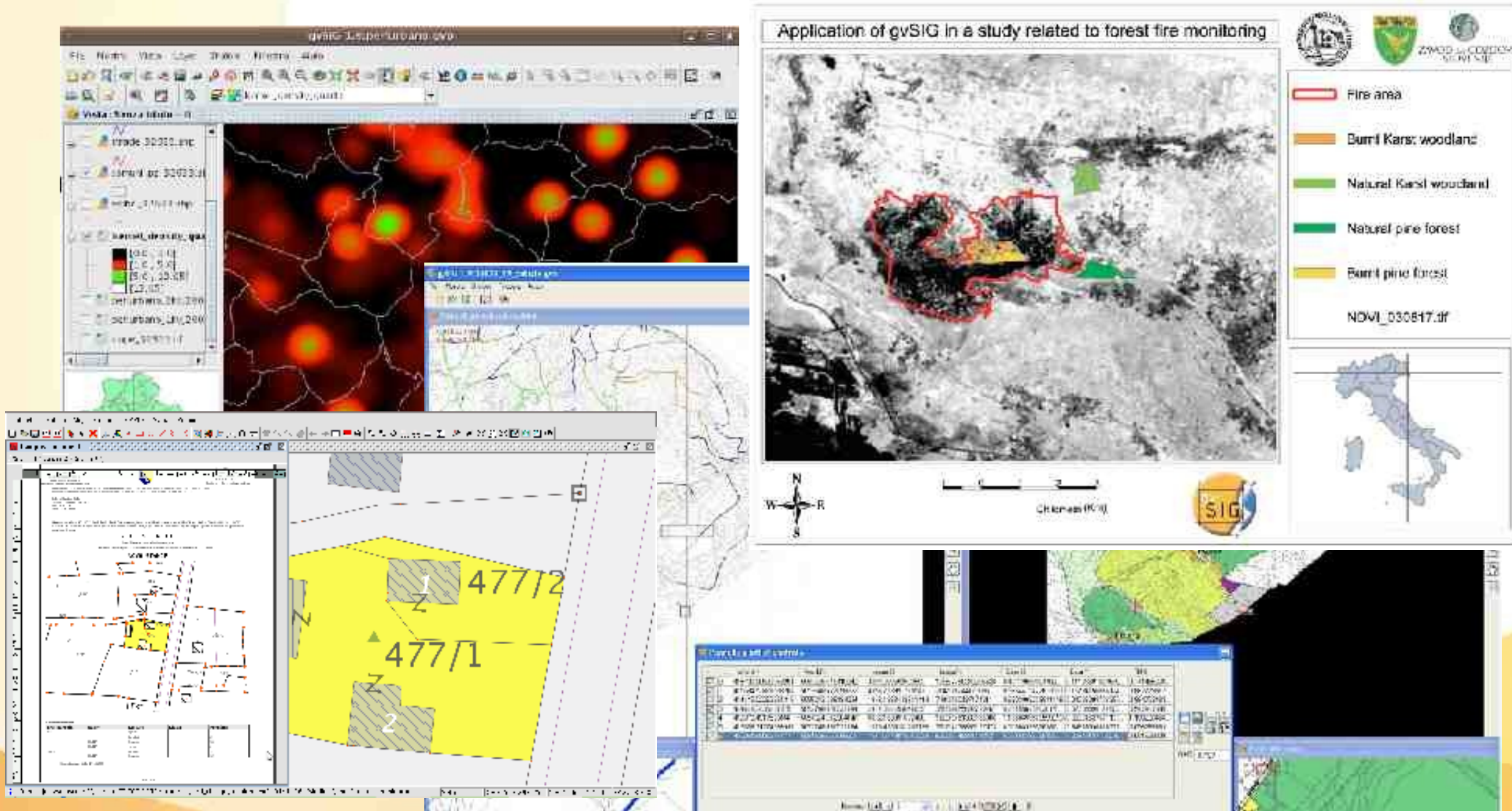


## Europe (Spain)

- Central Administration: IGN, Ministry of the Environment and Rural and Marine Affairs, Ministry of Public Works, Ministry of Science and Innovation, AECID, CSIC, ...
- Regional Administration: Junta de Andalucía, Junta de Extremadura, Generalitat Valenciana, Gobierno de La Rioja, Gobierno Vasco, ...
- Local Administration: Diputación de Málaga, Dip. de Pontevedra, Dip. de Jaén, ...



# Europe (France, Italy, Uk, Germany...)



The image displays several screenshots of the gvSIG software interface and a specific application for forest fire monitoring.

**Top Left Screenshot:** Shows the main gvSIG window with a map of a forest area. The map is overlaid with a red and orange heatmap, indicating fire risk or intensity. The interface includes a menu bar, a toolbar, and a layer list on the left.

**Top Right Screenshot:** Titled "Application of gvSIG in a study related to forest fire monitoring". It features a grayscale satellite or aerial image of a forest area. A red outline highlights a specific fire-affected region. A legend on the right identifies the following categories:
 

- Fire area (Red outline)
- Burnt Karst woodland (Orange)
- Natural Karst woodland (Light Green)
- Natural pine forest (Dark Green)
- Burnt pine forest (Yellow)

 The interface also includes a north arrow, a scale bar, and a small map of Italy in the bottom right corner.

**Bottom Left Screenshot:** Shows a detailed map view with a yellow highlighted area. The area is labeled with the numbers "477/1" and "477/2", likely representing land parcels or specific forest sections. The map includes various lines and symbols representing boundaries and features.

**Bottom Right Screenshot:** Shows a data table or attribute table window, displaying a list of data records with columns for various attributes. The table contains several rows of data, including numerical and text values.





**Thank you very much!!!**  
**Association** for the promotion of  
FOSS4G and the development of  
**gvSIG**

Alvaro Anguix  
aanguix@gvsig.com

Asociación gvSIG  
www.gvsig.com

*Quarte Giornate Italiane  
di gvSIG*

