

ROUTES OF TRANSHUMANCE AND HISTORICS PATHS IN ABRUZZO

TIZIANO ARBORETTI



ilex

Italian landscape exploration

3 DECEMBER
2015





History of the transhumance and the sheep tracks

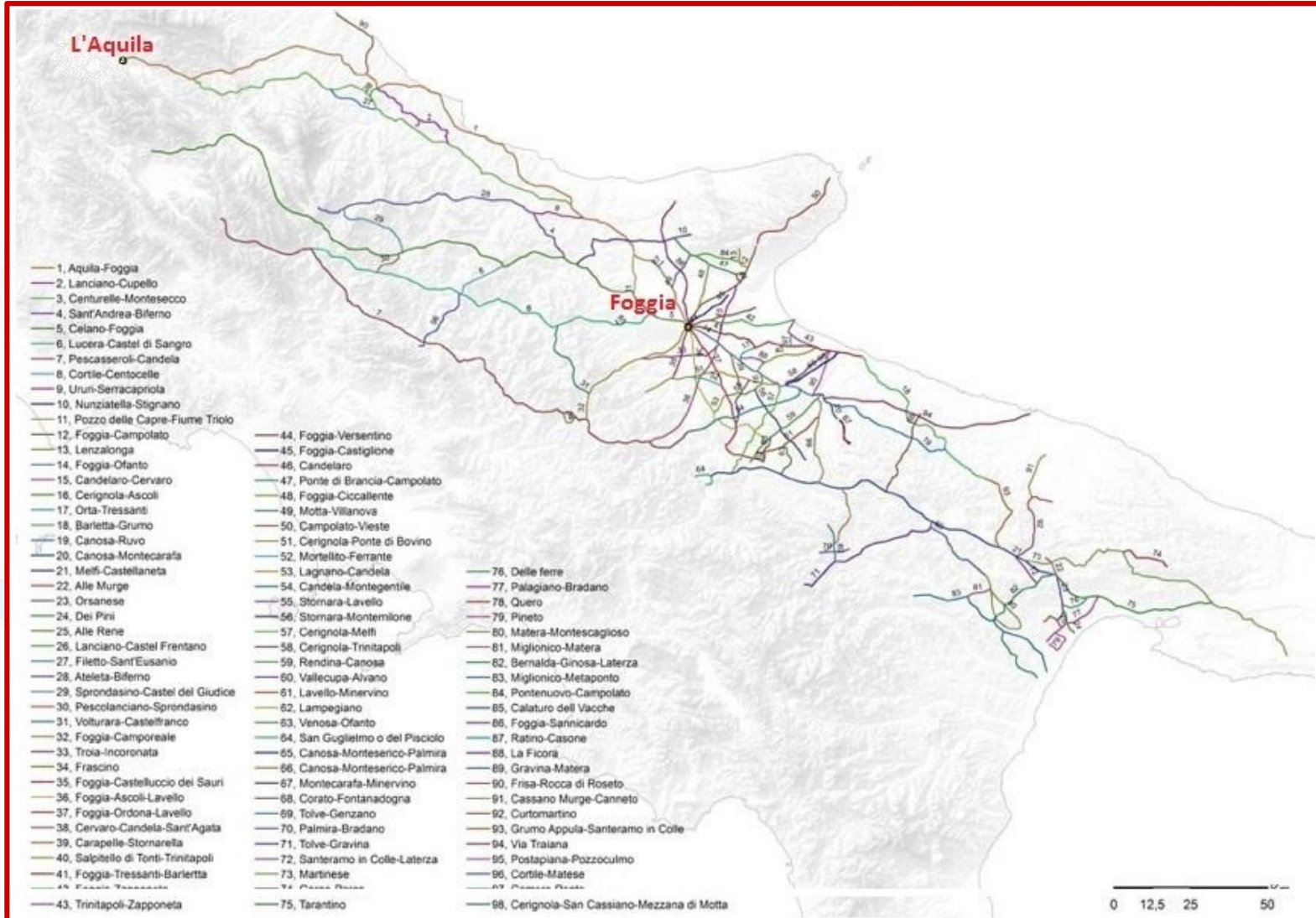
TRANSHUMANCE is the seasonal migration of the flocks and shepherds These moving from hilly and mountainous pastures to flat lands and coasts.



The **SHEEP-TRACKS** (called **TRATTURI** in Italian) were the routes connecting the Central and Southern Apennines (summer pastures) with winter pastures of Puglia , Lazio and Campania.



...in the fourteenth century thanks to Alfonso Ist of Aragon



- Total length **3.000 km**
- Width **111 mt**
- **3.000.000** sheep
- **30.000** people employed

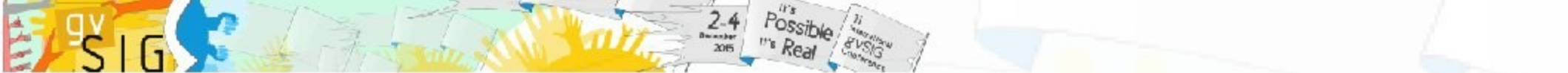


...the decline of transhumance

The socio-economic transhumance structure begins to fail when is reduced the possibility of grazing in Puglia .

1806 : the French carve up the great Puglia's pasture, called **Tavoliere**





Today, transhumance is gaining a new popularity for culture, tourism and local products...



TRATTURO MAGNO



- It connect L'Aquila with Foggia
- Length 240 km
- Width 111 mt
- 20 day journey

TRATTURO MAGNO

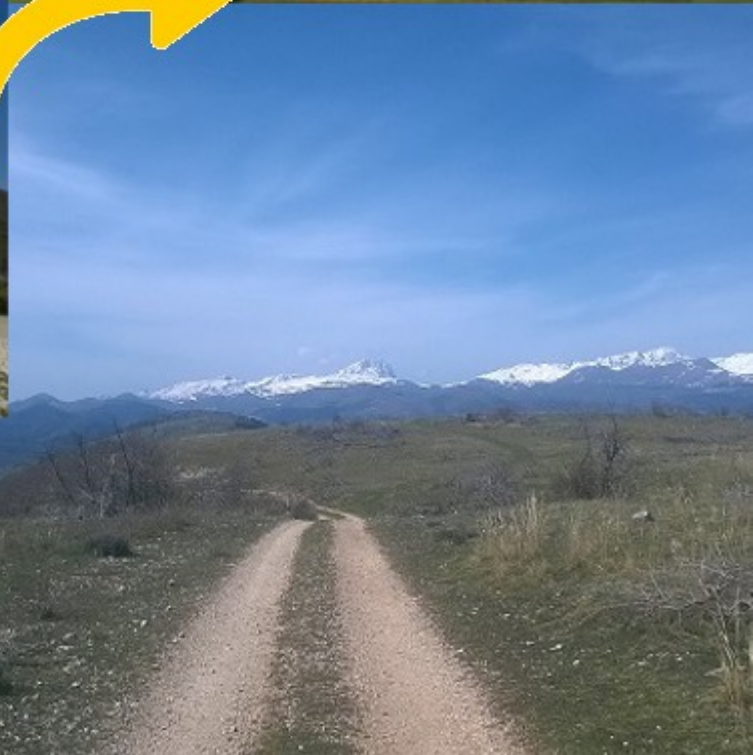


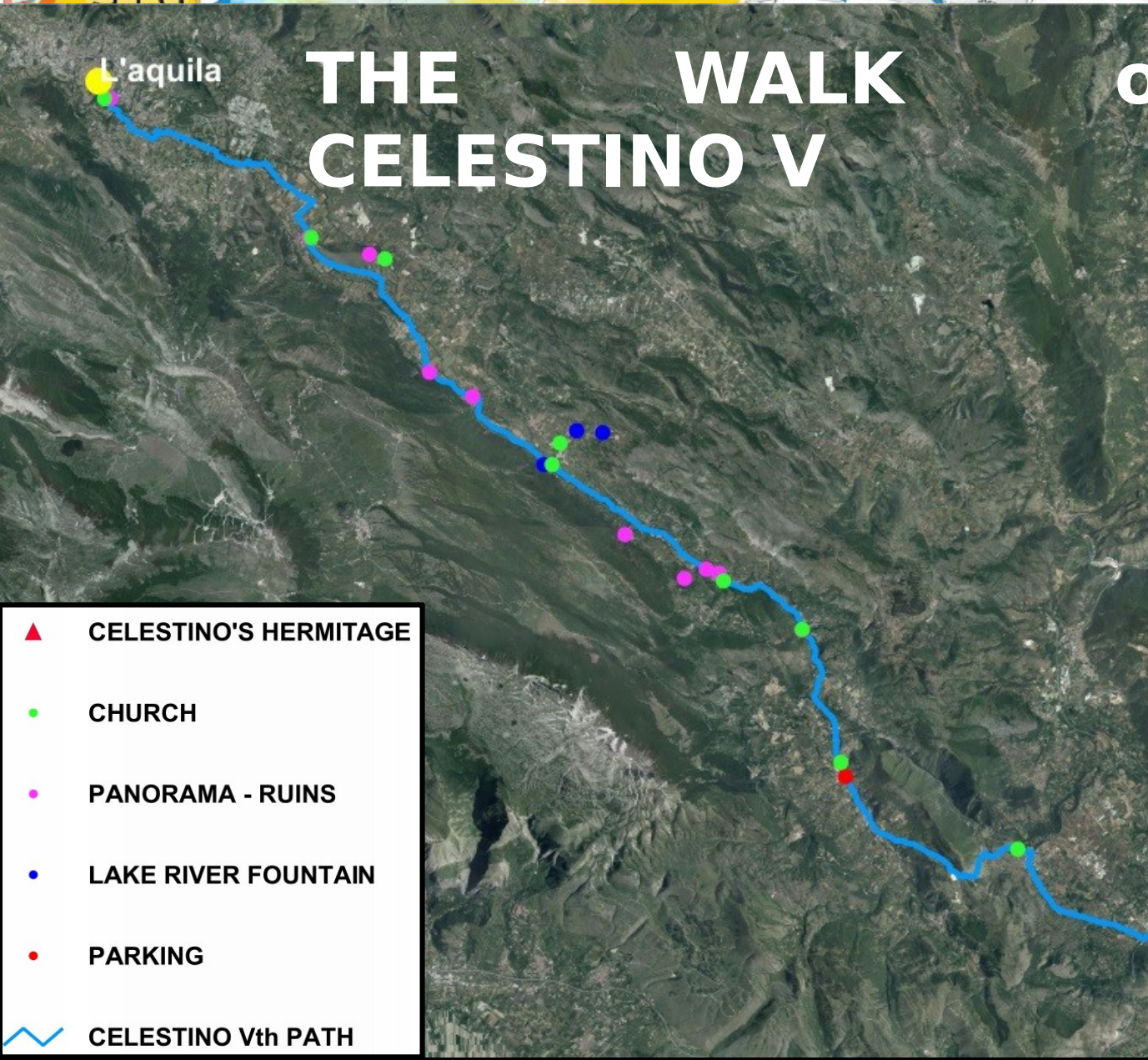
● 44 km

● 17 km

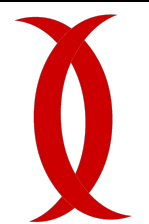
● 35 km



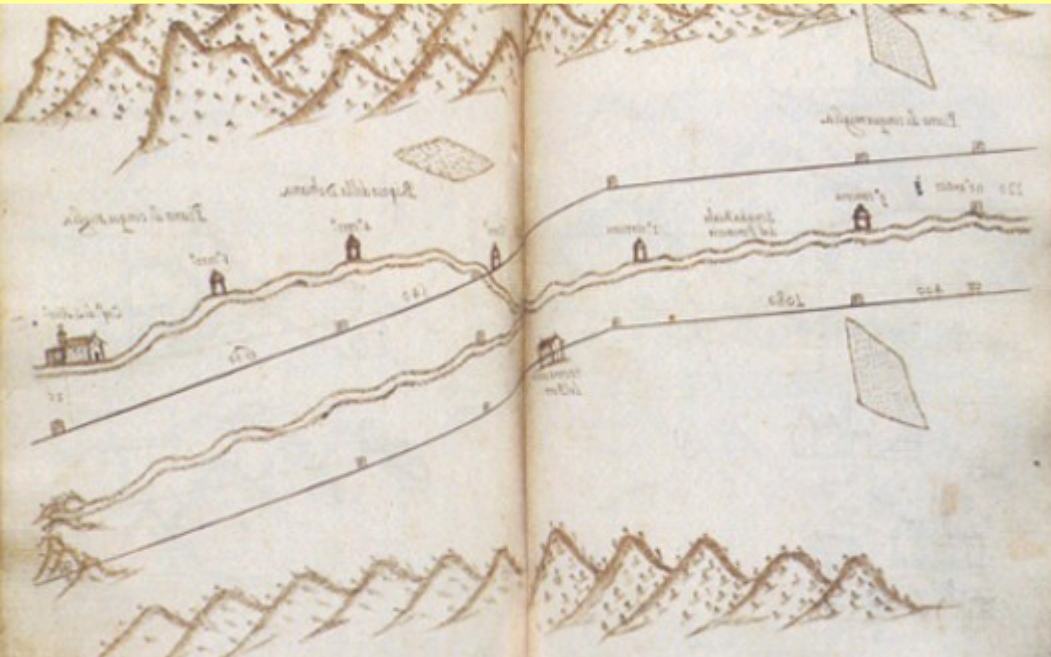




● 80 Km



BASIC INFORMATION

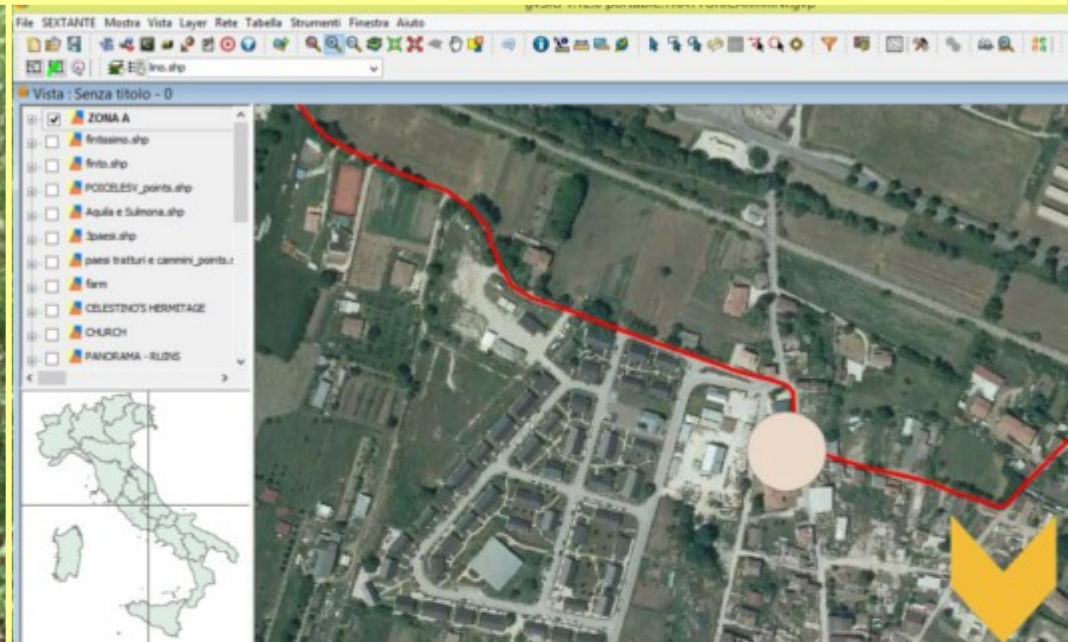
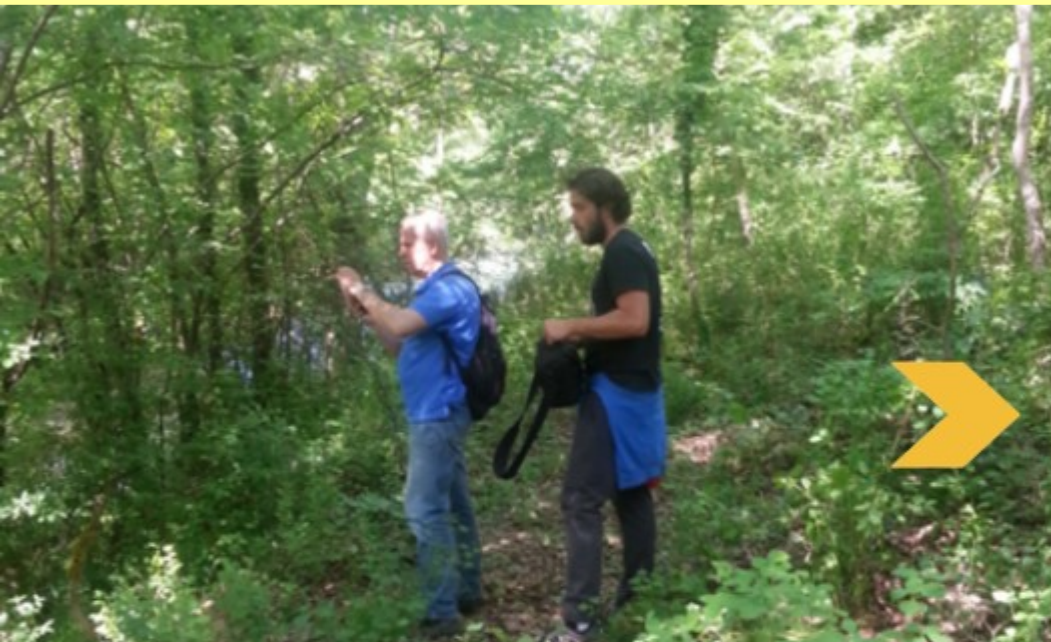


SHEEP-TRACK'S OWNERSHIP





GPS & GIS



MAINTENACE OF PATHS



Le vie della transumanza

GUIDA E MAPPA DEI TRATTURI AQUILANI
FRA GRAN SASSO E SIRENTE

How to read the map
 The map shows the routes of the transhumance routes in the area of Gran Sasso and Sirente. The routes are marked with yellow lines and dots. The map also shows the locations of the tratturi (sheep pens) and the routes of the transhumance routes.

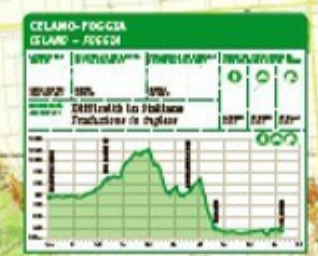
The Route of the Transhumance
 The route of the transhumance is a long and winding path that connects the mountainous areas of Gran Sasso and Sirente to the plains of the Tiber valley. The route is marked with yellow lines and dots, and it passes through some of the most beautiful landscapes of the region.

Map of the tratturi aquilani
 The map shows the locations of the tratturi (sheep pens) in the area of Gran Sasso and Sirente. The tratturi are marked with yellow dots, and the routes of the transhumance are marked with yellow lines.



LE VIE DELLA TRANSUMANZA. PART OF THE TRANSDRIVERS
Mapa dei tratturi aquilani fra Gran Sasso e Sirente
 Map of the drivers' tracks of the Aquilani area between Gran Sasso and Sirente

- TRATTURI ABRUZZO
- CANTIERI MONTESICCO
- CELLANO FOCOGNA



LE VIE DELLA TRANSUMANZA PATRIMONIO DELL'UNESCO

Le vie della transumanza
 GUIDA AI TRATTURI AQUILANI
 FRA GRAN SASSO E MARSICA

TERRE
 TRATTURI ABRUZZO
 CANTIERI MONTESICCO
 CELLANO FOCOGNA

LE VIE DELLA TRANSUMANZA PATRIMONIO DELL'UNESCO

Sentieri dello spirito in Abruzzo
 GUIDA AI CAMMINI STORICI
 FRA GRAN SASSO E MARSICA

TERRE
 TRATTURI ABRUZZO
 CANTIERI MONTESICCO
 CELLANO FOCOGNA



Trattorie Camminie

Thanks for your kind attention

