



gvSIG Online for local administration

**Municipality platform for geographic
information management**



gvSIG Association

A short introduction...

gvSIG Association

About us

- It was born in 2010 within the frame of the gvSIG Project.
- Composed of companies (Members) and non business entities (Honour Members). Collaborators and distributors. Reduce asymmetries between countries.
- The biggest international network of experts in free geomatics.
- References and clients in +30 countries. Software used in +160 countries.
- Experience in SDI projects, corporative GIS and free geomatics for public and private entities.
- We participate at the main forum and organizations: ISO/TC 211 (AEN/CNT148), OSGeo, OGC, INSPIRE, ICA, GT-IDEE, GODAN, GeoforAll,...

gvSIG Association

Awards and recognitions

- 2020:
 - “Sustainable Entrepreneur” at Innovation+Sustainability+Network Awards by Expansión, Bankinter and Viesgo
- 2017:
 - 1st prize in “Cross-border category” at “Sharing & Reuse Awards” of European Commission.
 - “Europa Challenge” in Helsinki awarded by NASA to the gvSIG Suite,
 - Excellence “Internationalization” Award given by the Professional Union of Valencia.
 - “ITC Promoter organization” prize awarded by the Valencian Telecommunications.
- 2016:
 - “Europa Challenge” awarded by NASA (World Wind integration with gvSIG Online).
 - “Best open source mobile software” and “Most revolutionary software” Open source software awards.
- 2015:
 - “Europa Challenge” awarded by NASA (World Wind integration with gvSIG Desktop).



and the
winner is...



gvSIG Association

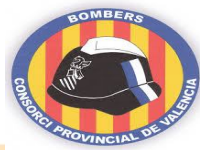
Who has trusted us... Examples



INSTITUTO
GEOGRÁFICO
NACIONAL



الوكالة الوطنية للمحافظة العقارية والمسح العقاري والخرائطية
Agence Nationale de la Conservation Foncière du Cadastre et de la Cartographie



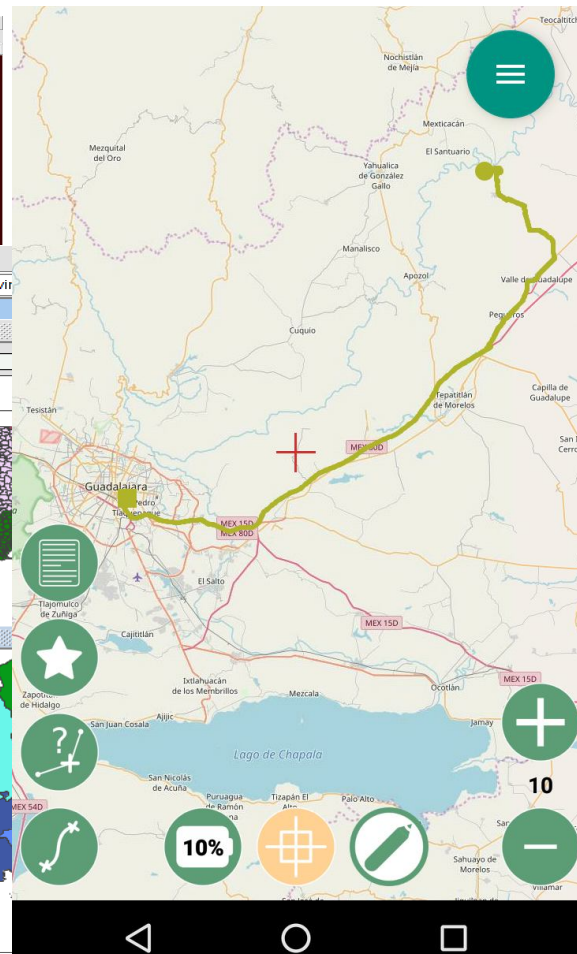
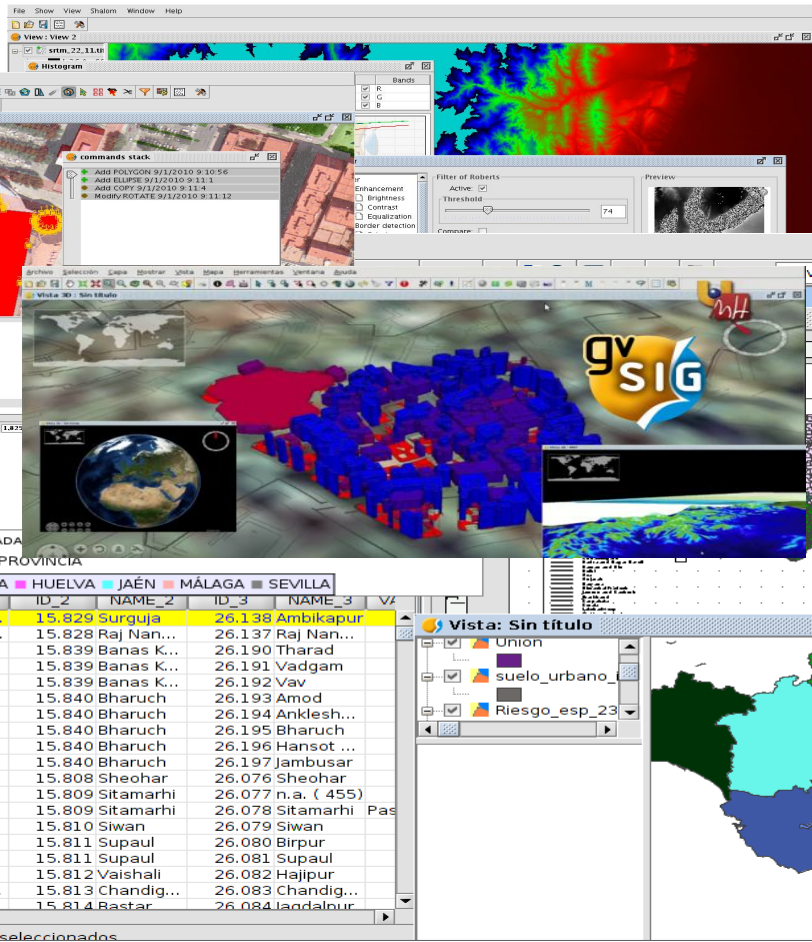
Ajuntament de Cullera

Catalog of gvSIG solutions

gvSIG Desktop: Desktop Geographic Information System. It includes different extensions for editing, 3D analysis, geoprocessing, maps, etc.

gvSIG Online: Integral platform for Spatial Data Infrastructure (SDI) implementation.

gvSIG Mobile/gvSIG MApps: Geographic Information System for mobile devices. Oriented to take field data.



Components of a GIS

- **Spatial Data Infrastructure**
 - Database (spatial), Map server
Geoportal(s), Catalog, Gazetteer
- **Desktop GIS**
- **Mobile GIS**

Components of a GIS

- **gvSIG Online**
 - Database (spatial), Map server
Geoportal(s), Catalog, Gazetteer
- **gvSIG Desktop**
- **gvSIG Mobile / gvSIG MApps**

Components of a GIS

- **gvSIG Online**
 - Base de datos **Open Source software**
 - Geoportal(es), Catálogo, Nomenclátor **Interoperable**
- **gvSIG Desktop** **Standards**
- **gvSIG Mobile** **Built-in**

What is gvSIG Online?

- Solution to manage all the geolocated information of a municipality... that means, more than the 80% of the information:
 - Urban planning and cadastre
 - Environment
 - Security
 - Infrastructures
 - ...
- **It allows to catalog, locate and share information in an easy way** through web map viewers, internally (private) as well as with the citizens.
- Any use limitations.



Map viewers

The screenshot shows the gvSIG online web interface. Labels with arrows point to the following components:

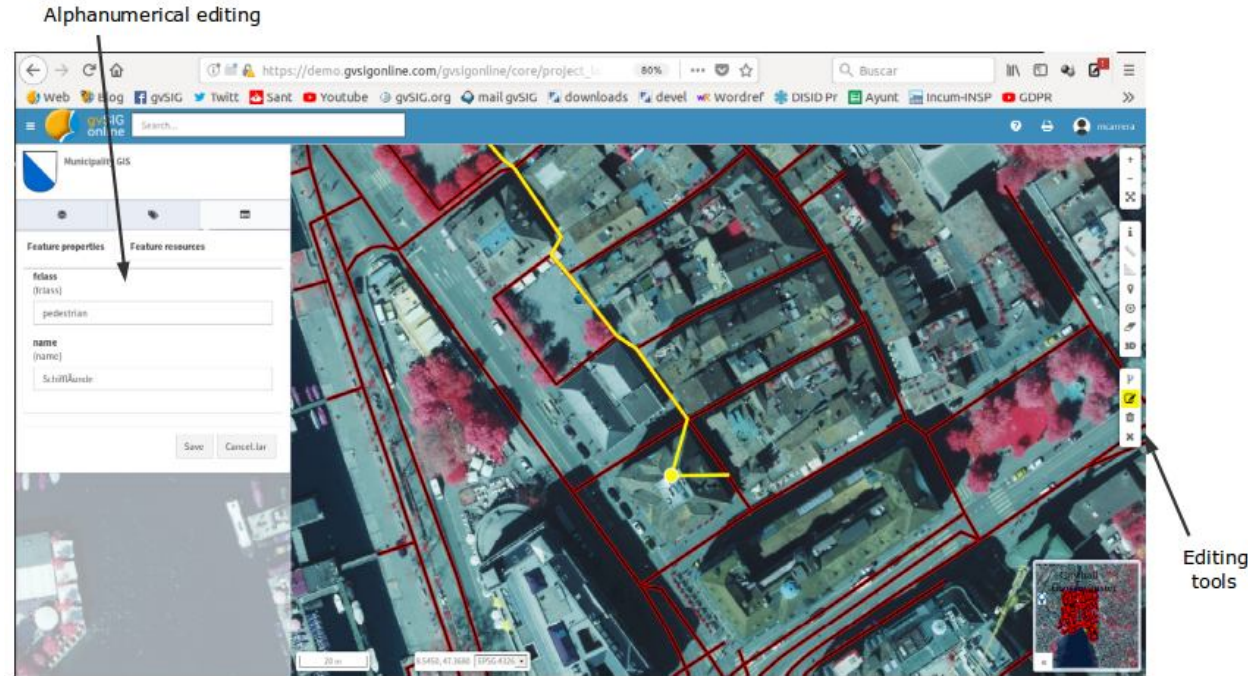
- Legend:** Points to the 'Spanish Official Cartography' logo and the layer selection menu on the left.
- Alphanumerical information:** Points to the search bar at the top.
- Browser:** Points to the layer selection menu on the left.
- Map:** Points to the main map area showing a coastal region with roads and railways.
- Toolbar:** Points to the top navigation bar.
- Control panel access:** Points to the user profile and settings area at the top right.
- Table of contents with layers and base layers:** Points to the layer selection menu on the left.
- Graphic scale:** Points to the scale bar at the bottom left of the map.
- Coordinates:** Points to the coordinate input field at the bottom left of the map.
- Locator:** Points to the locator map at the bottom right of the main map.
- Tools:** Points to the toolbar on the right side of the map.

This block shows a detailed view of the 'Transports and Infrastructures' legend. It lists the following layers with their corresponding symbols:

- Railway stations
- Main roads
- Motorways
- Airports
- Lighthouses
- Railways
- Harbours

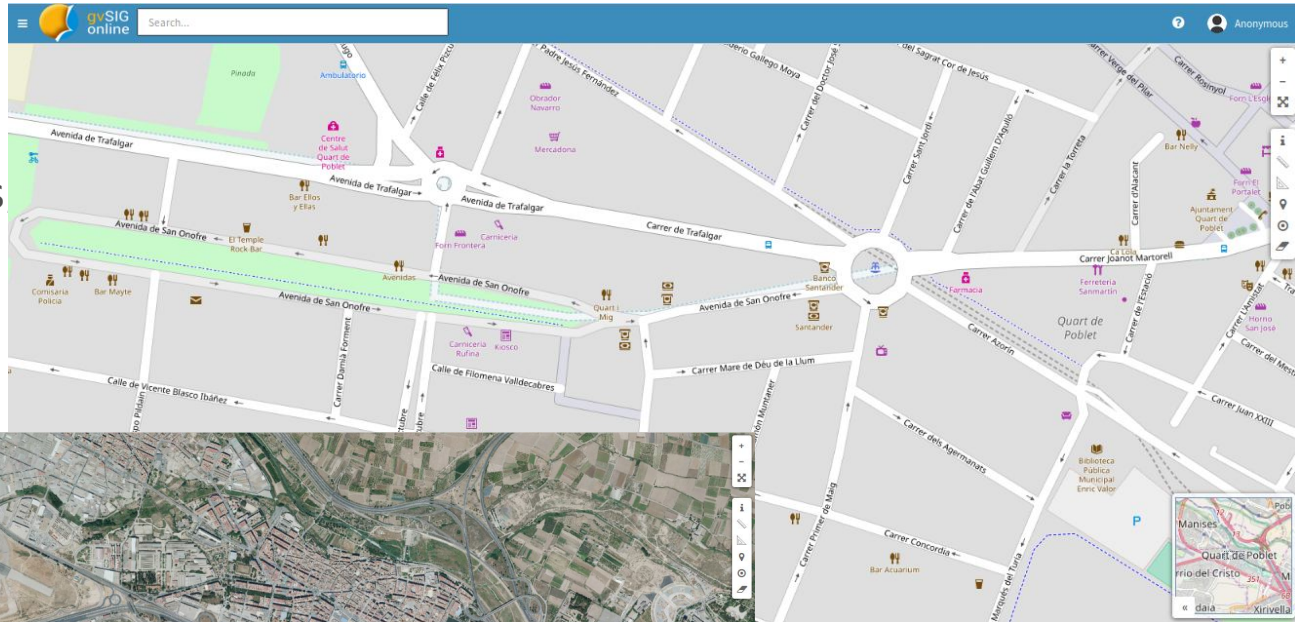
Map viewers

- Creation of geoportals in less than a minute
- Maps to be printed
- Editing tools: useful for inventories, census...
- 4D: temporary changes (e. g. cadastre at an specific date)



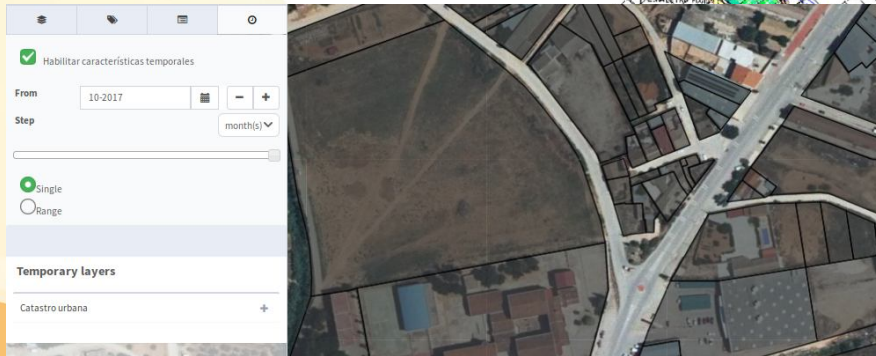
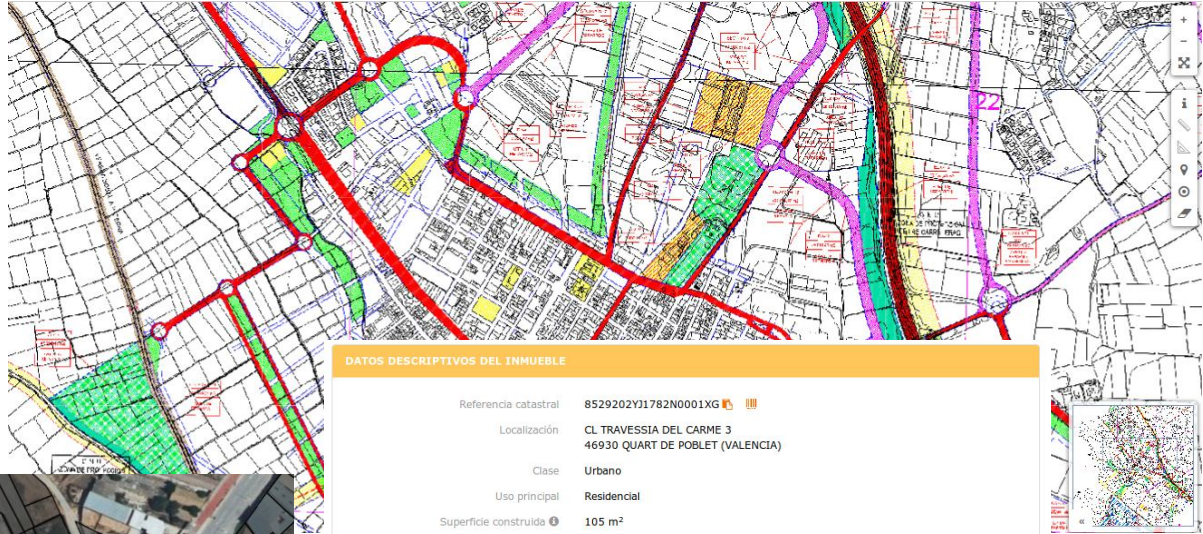
Street map

- Basic information of the municipality.
- Search for streets points of interest.
- Municipal services.



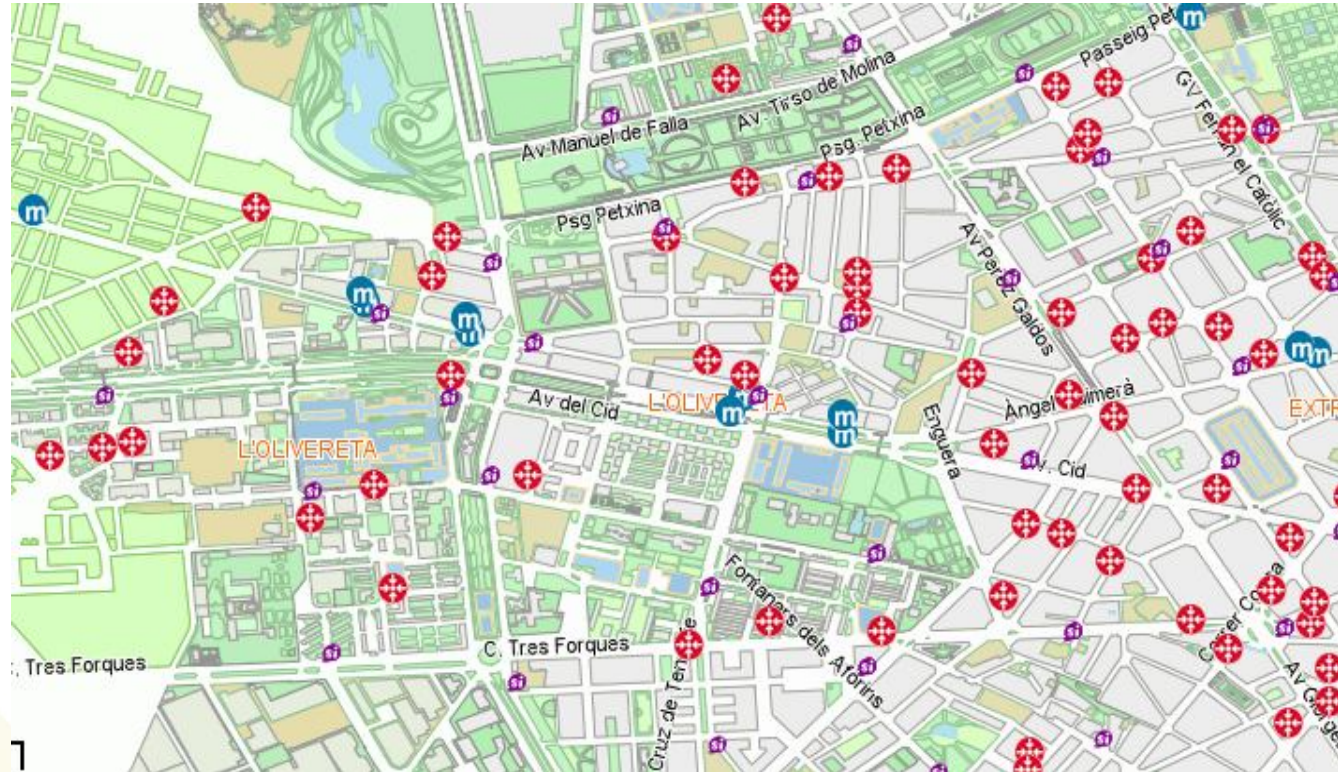
Urban planning and cadastre

- Urban information
- Cadastre
- Temporary data
- Link to cadastral management centre
- Link to document manager

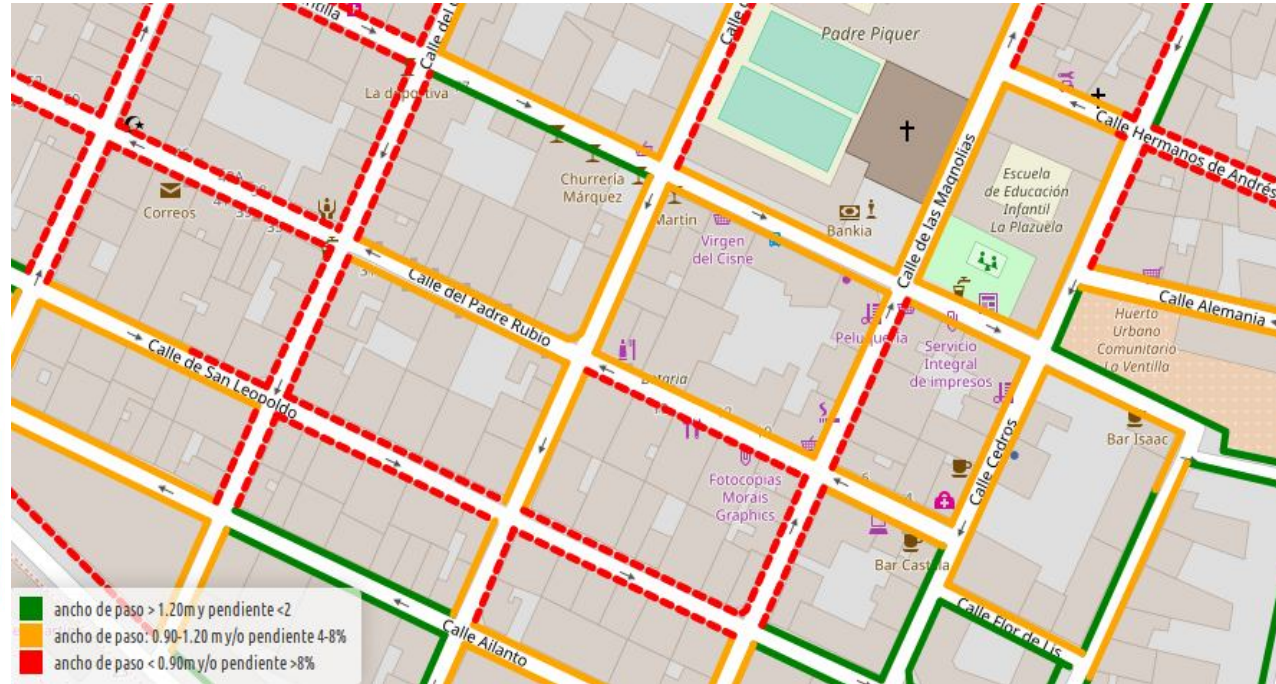


Mobility

- Bus
- Metro
- Cycle line
- Parking

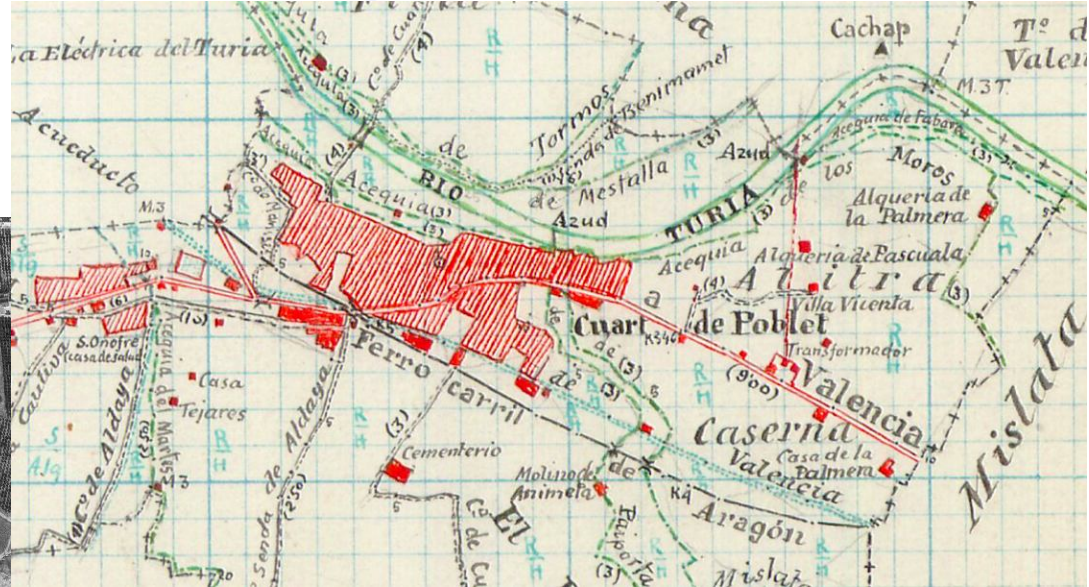


- Pavement size
- Passing size
- Slopes
- Accessibility



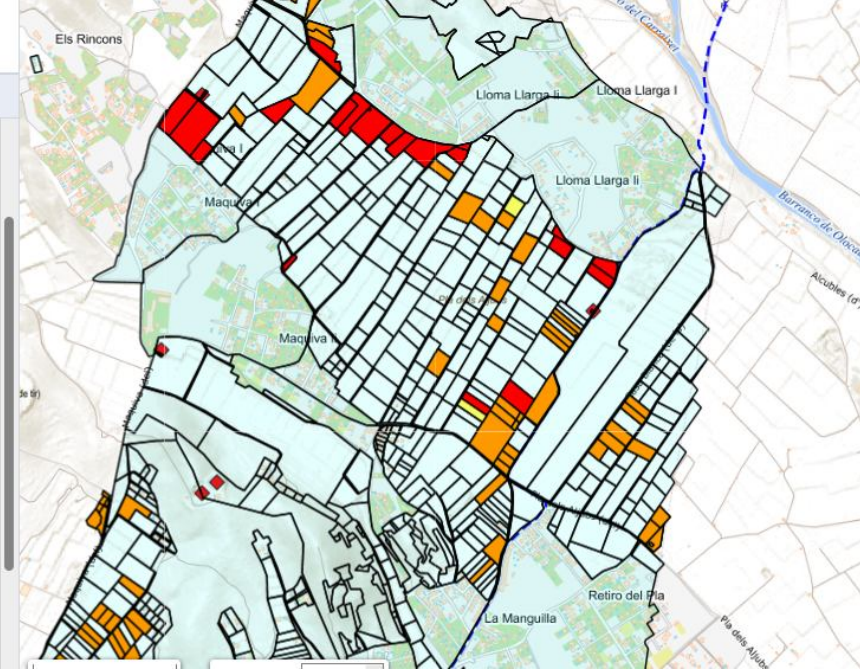
Historical cartography

- Old maps
- American flight
- ...



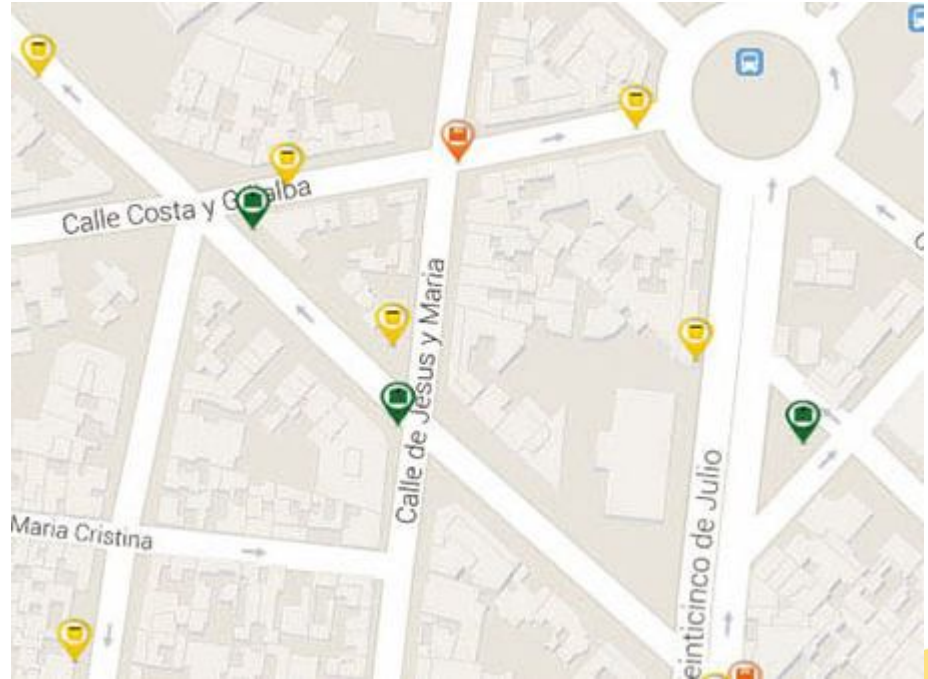
Environment

- Urban green areas
- Abandoned land
- Livestock way
- Bee-keeping



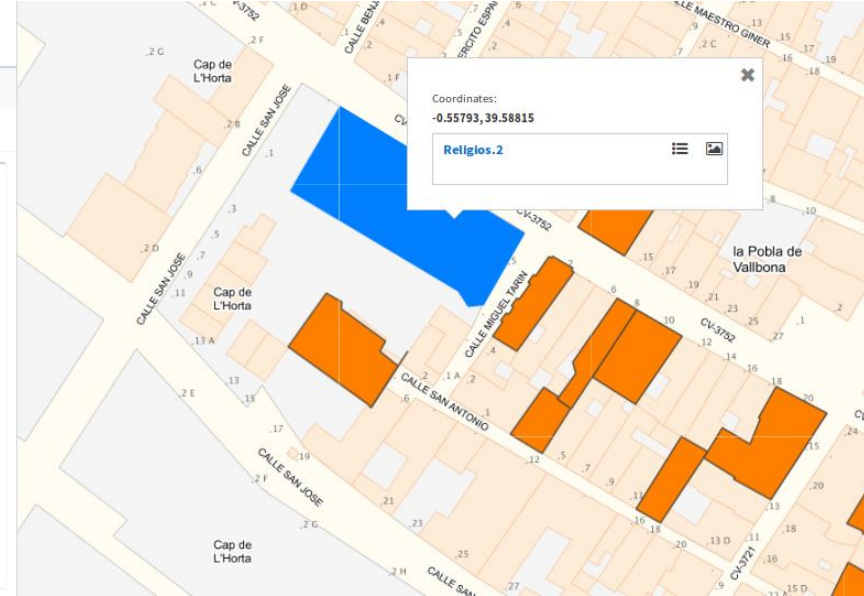
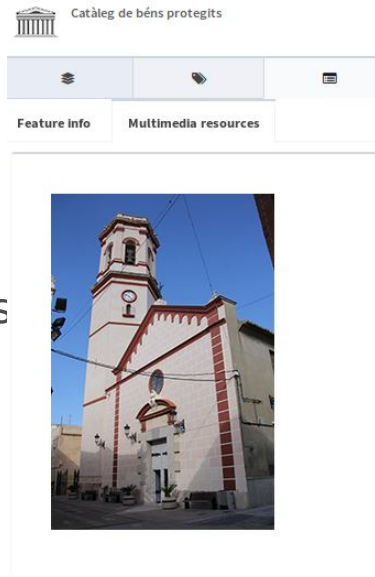
Urban waste

- Skips
- Recycling
- Clean Spot / Waste recycling site



Heritage

- Acknowledged National Historic Interest Items
- Boundary markers
- Paths
- Archaeological tasks
- Country houses, cisterns,...



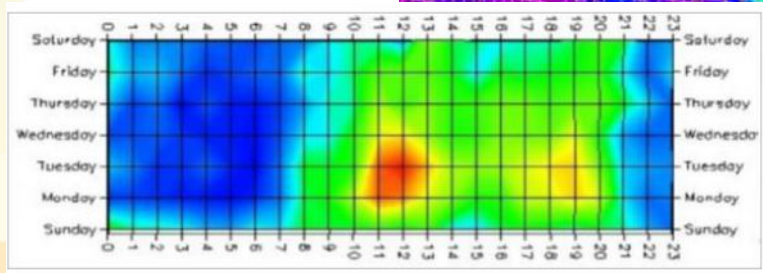
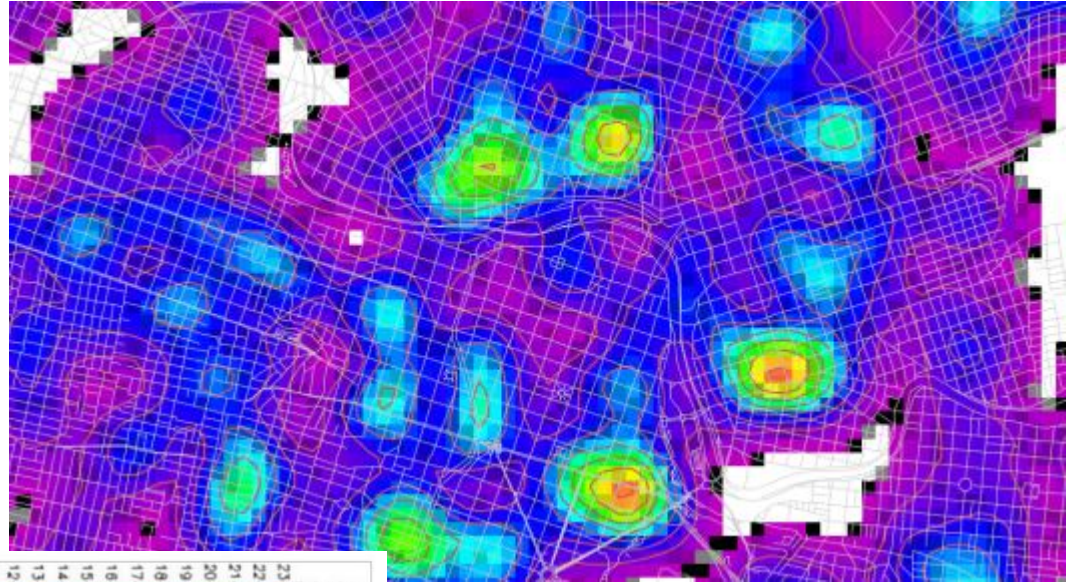
Trade and Industry

- Local business
- Industrial Parks



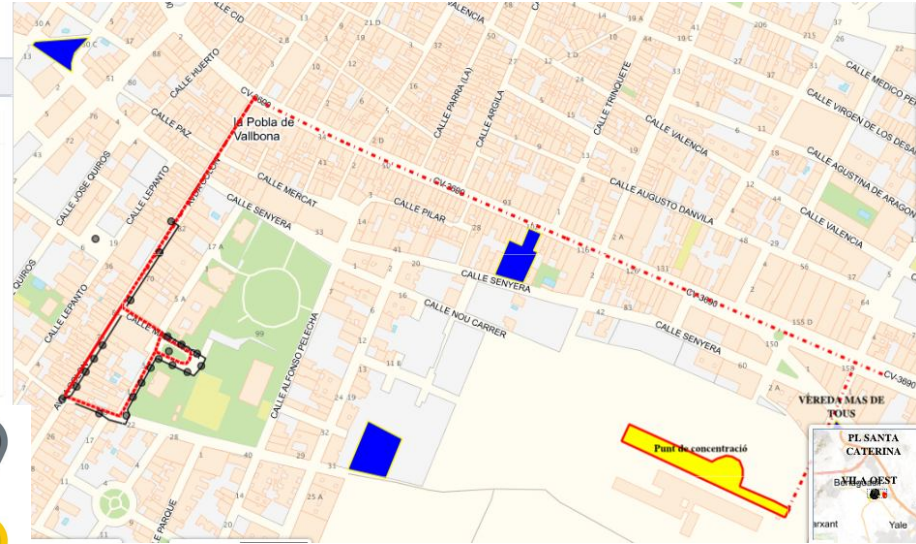
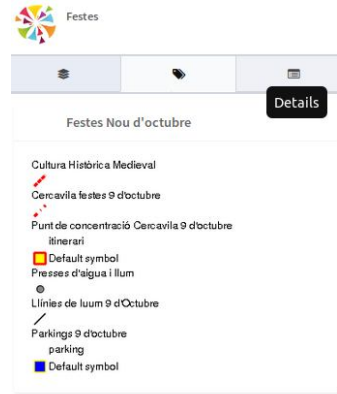
Citizen coexistence and safety

- Crime representation
- Local Police
- Emergencies



Tourism

- Tourist maps.
- Entertainment and cultural activities.
- Thematic maps: Christmas, Eastern.
- Information about closed streets.



Municipality inventory

- Street lights
- Drinking fountains
- Benches
- Vertical signs
- Maintenance / Inventory state



Inventari Geogràfic Municipal

☒ Bancs
☐ Contenedores
☒ Fonts
☐ Jocs
☒ Papeleres
☐ Panells informatius
☒ Enllumenat
☐ Edificis Públics

Fonts

descripció
Fuente de piedra

material
Piedra

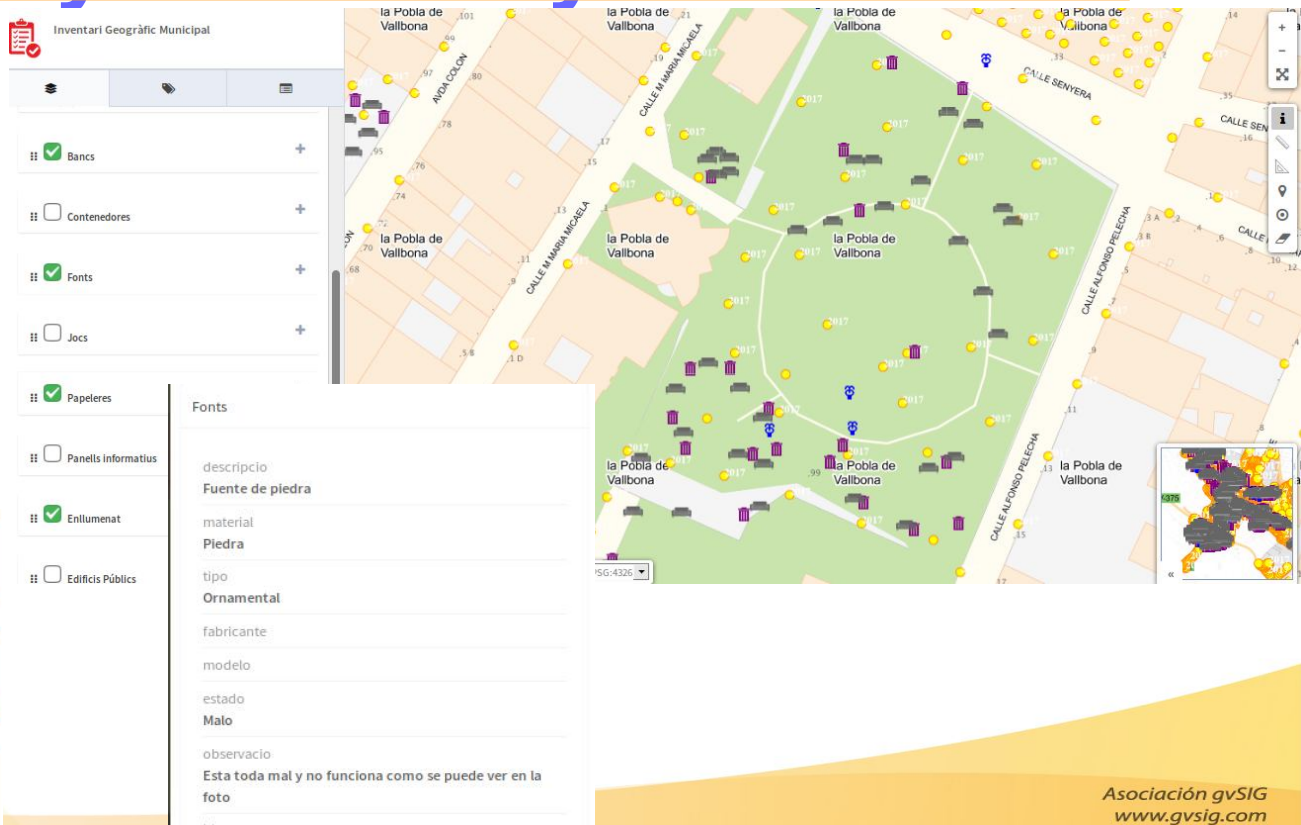
tipo
Ornamental

fabricante

modelo

estado
Malo

observacio
Esta toda mal y no funciona como se puede ver en la foto



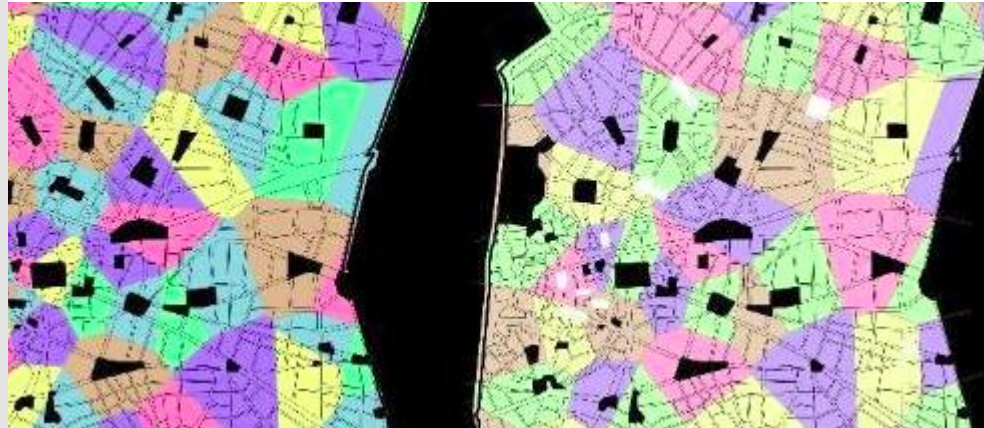
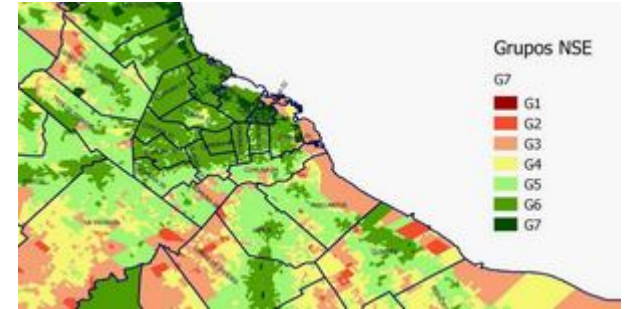
Integrations

- Sensors (Sentilo)
- Document manager
- Open Data



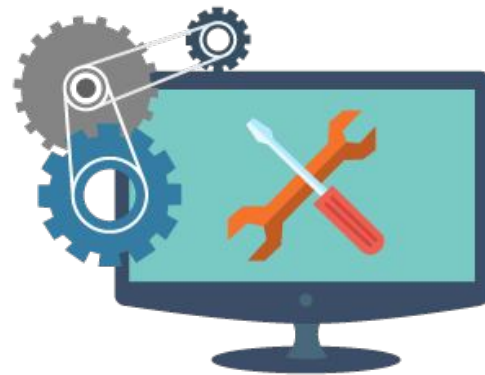
Socio-economic analysis

- Education
- Age
- Job
- Opinion surveys
- ...



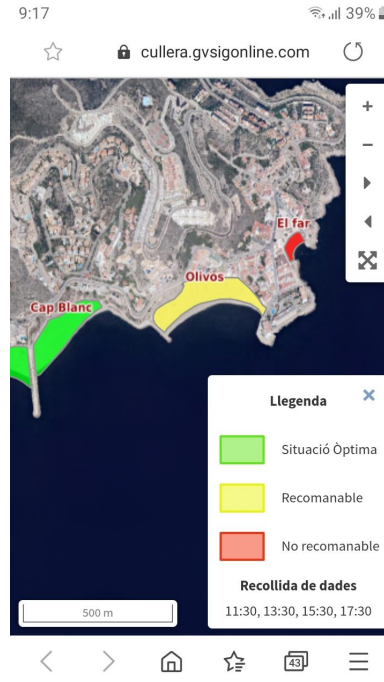
Implementation modalities

- SaaS. As a service.
 - External Hosting
 - System administration service
- On-Premise.
 - At city council servers
- On-Premise Plus.
 - At city council servers
 - System administration service
- OPEN SOURCE SOFTWARE. ANY COST OF LICENSE AND THEIR MAINTENANCE
- MAXIMUM TIME TO BE LAUNCHED: 3 MONTHS



gvSIG MApps

- Framework to create applications with “geo” component.



Contact...



Follow us on <https://www.facebook.com/gvSIG/>



Follow us on @gvsig



Join our group on <https://www.linkedin.com/groups/4478025>



Contact us at info@gvsig.com

gvSIG Blog, to be informed: <https://blog.gvsig.org/>



www.gvsig.com