



The MEF import and export format

Why a new format?

To facilitate backup, transfer and migration of

- spatial data
- metadata
- preview images
- basic privileges
- some other info

Server reference doc

Chapter 3

Metadata Exchange Format v1.0

3.1 Introduction

The metadata exchange format (MEF in short) is a special designed file format whose purpose is to allow metadata exchange between different platforms. A metadata exported into this format can be imported by any platform which is able to understand it. This format has been developed with GeoNetwork in mind so the information it contains is mainly related to it. Nevertheless, it can be used as an interoperability format between any platform.

This format has been designed with these needs in mind:

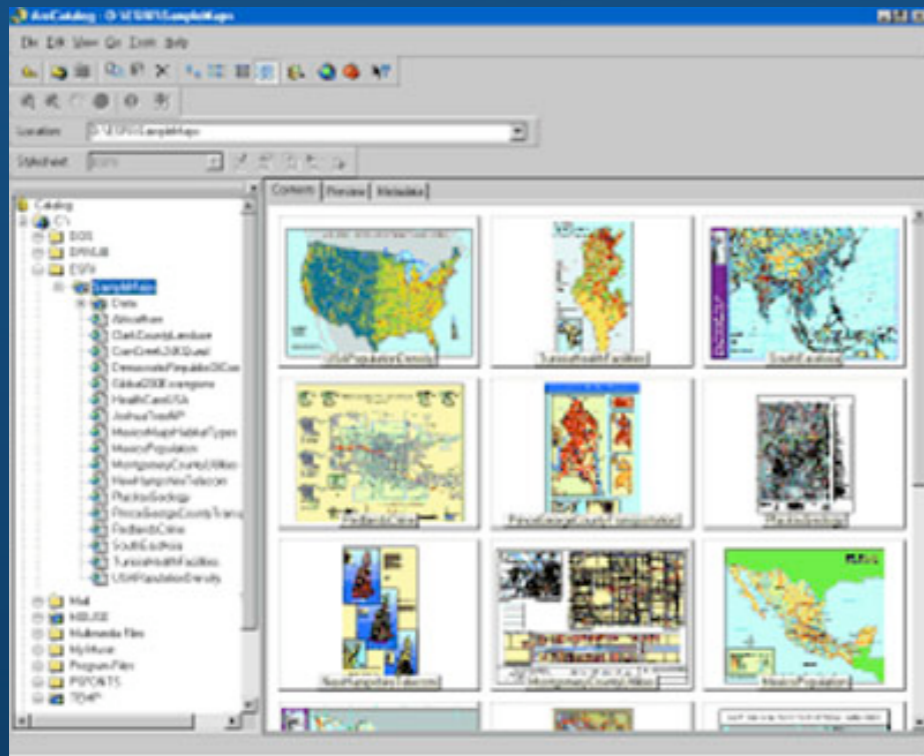
- Export a metadata record for backup purposes
- Import a metadata record from a previous backup

• Import a metadata record from a previous backup

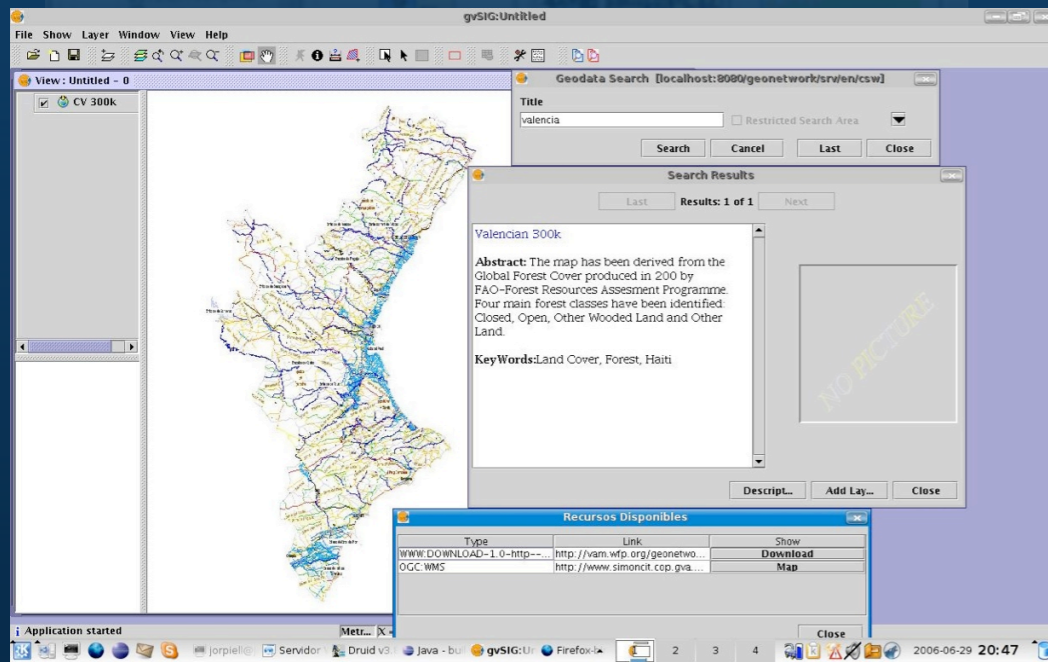
• Export a metadata record for backup purposes

Tool integration

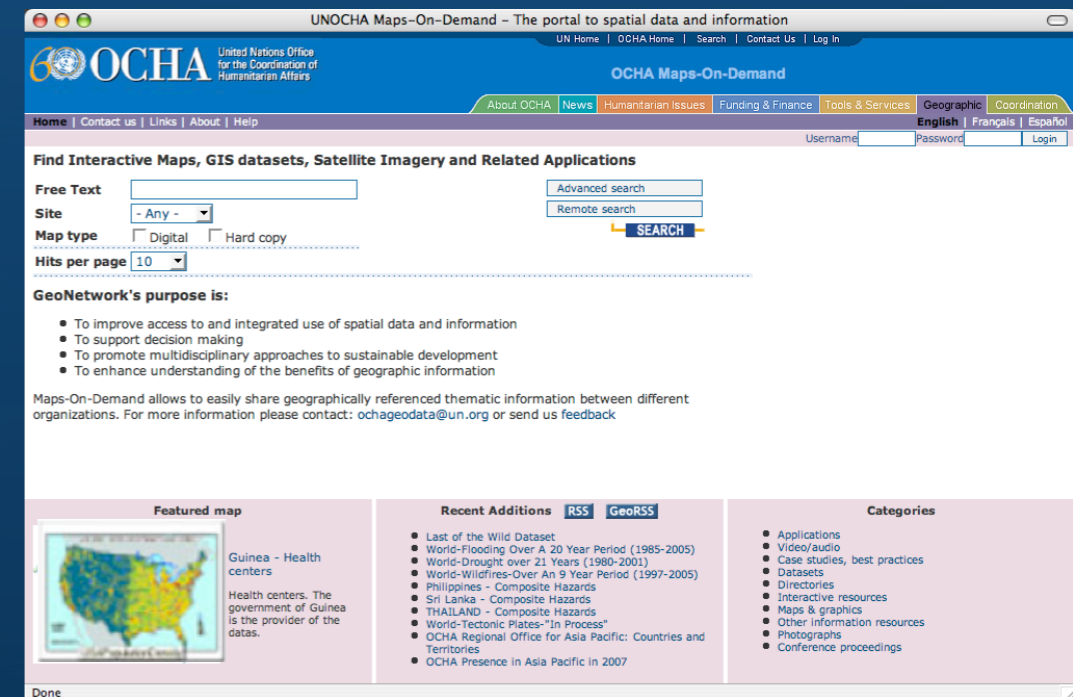
GeoNetwork



ESRI ArcCatalog



gvSIG



Export/import
metadata & data

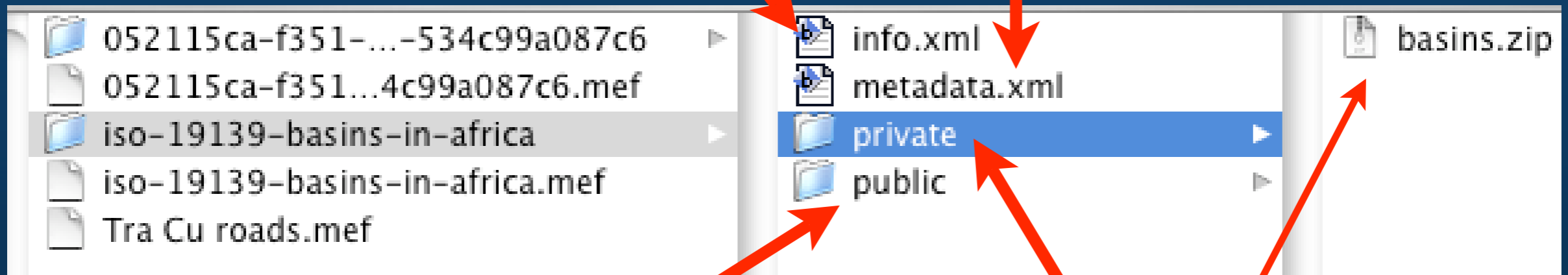
MEF content

- **simple** : both public and private are omitted.
- **partial** : only public files are provided.
- **full** : both public and private files are provided.

MEF content

info file

Metadata document



Preview images

Private data (uploaded data)

Info.xml

```
<?xml version="1.0" encoding="UTF-8"?>
<info version="1.0">
  <general>
    <createDate>2007-07-19T14:45:07</createDate>
    <changeDate>2007-07-25T11:35:09</changeDate>
    <schema>iso19139</schema>
    <isTemplate>>false</isTemplate>
    <localId>10</localId>
    <format>full</format>
  </general>
  <categories>
    <category name="datasets" />
    <category name="interactiveResources" />
    <category name="maps" />
  </categories>
  <privileges>
    <group name="sample">
      <operation name="view" />
      <operation name="download" />
      <operation name="notify" />
      <operation name="dynamic" />
      <operation name="featured" />
    </group>
    <group name="all">
```

Info.xml (continued)

```
    <operation name="dynamic" />
    <operation name="featured" />
</group>
<group name="all">
    <operation name="view" />
    <operation name="download" />
    <operation name="dynamic" />
    <operation name="featured" />
</group>
<group name="intranet">
    <operation name="view" />
    <operation name="download" />
    <operation name="dynamic" />
    <operation name="featured" />
</group>
</privileges>
<public>
    <file name="thumbnail.gif" changeDate="2007-07-19T15:27:10" />
    <file name="thumbnail_s.gif" changeDate="2007-07-19T15:01:54" />
</public>
<private>
    <file name="basins.zip" changeDate="2007-07-25T11:43:13" />
</private>
</info>
```


Available services in GeoNetwork

- `../geonetwork/srv/en/mef.export`
(takes uuid, format & skipUuid parameters)
- `../geonetwork/srv/en/mef.import`
(takes mefFile in POST request)