

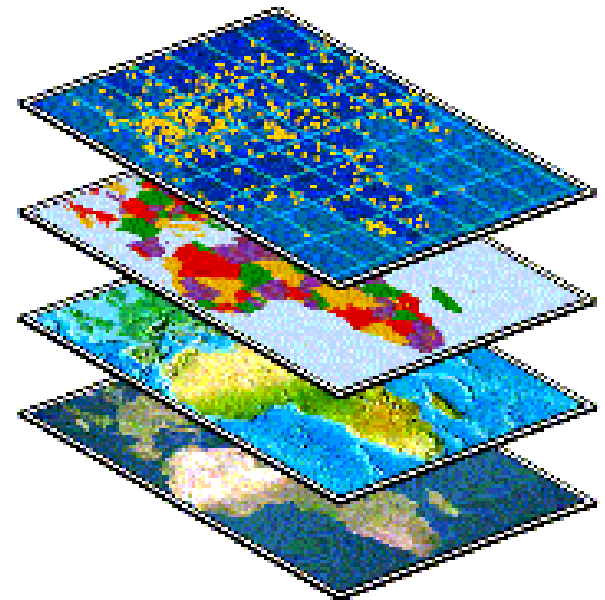


**Chamber of Commerce and Industry (CCI) for Munich and Upper Bavaria**

## Up to date Presentation an Process Optimization with OpenGIS – Status and Perspective for the work of the Chambers of Commerce and Industry –

### Today's Agenda

- What is a CCI?
- GIS-Requirements of a CCI
- Some Examples
- Next steps



## Portrait Chamber of Commerce and Industry (CCI) Munich and Upper Bavaria

- Self-administering body under public law for companies of industry, trade and services
- One of 80 Chambers of Commerce and Industry in Germany with about 320.000 membership companies
- Main tasks are sovereign functions, service for companies and the representation of their interests



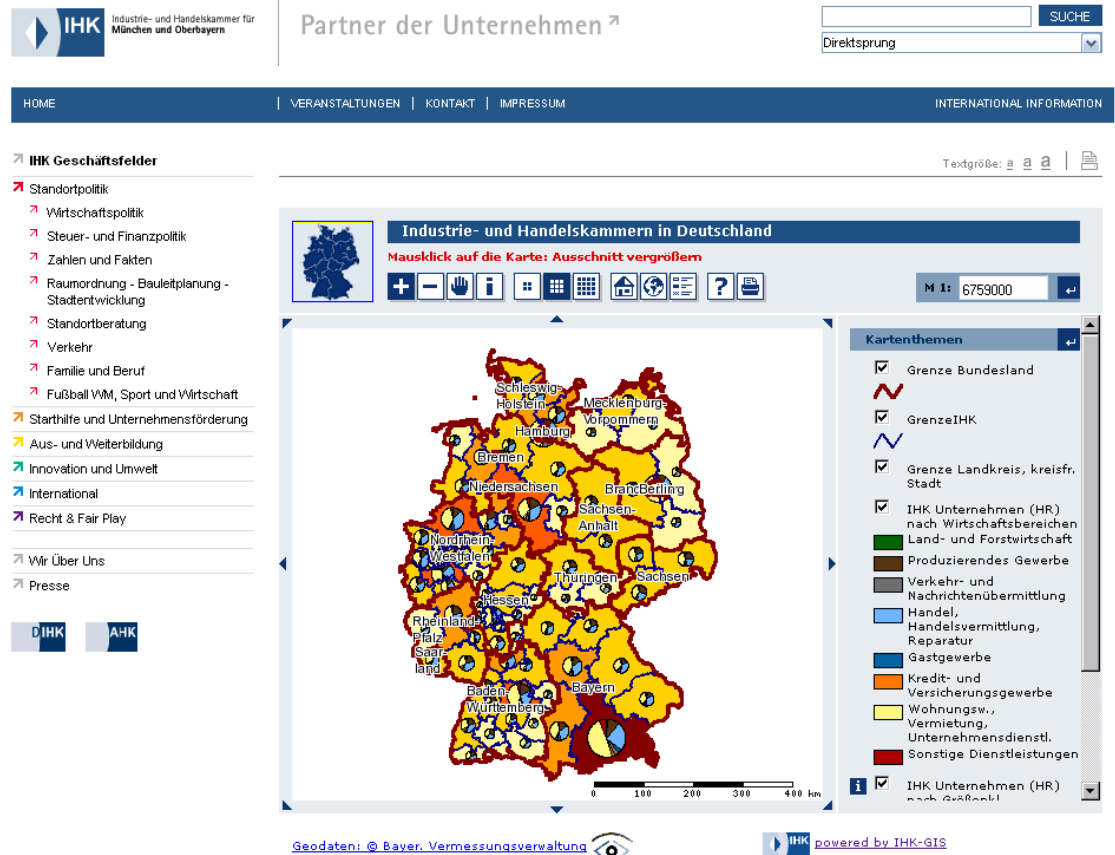
# CCI functions & services (georelevant)

## ■ Sovereign functions

- Responsible for public interests of economy in country-, regional- and Town planning

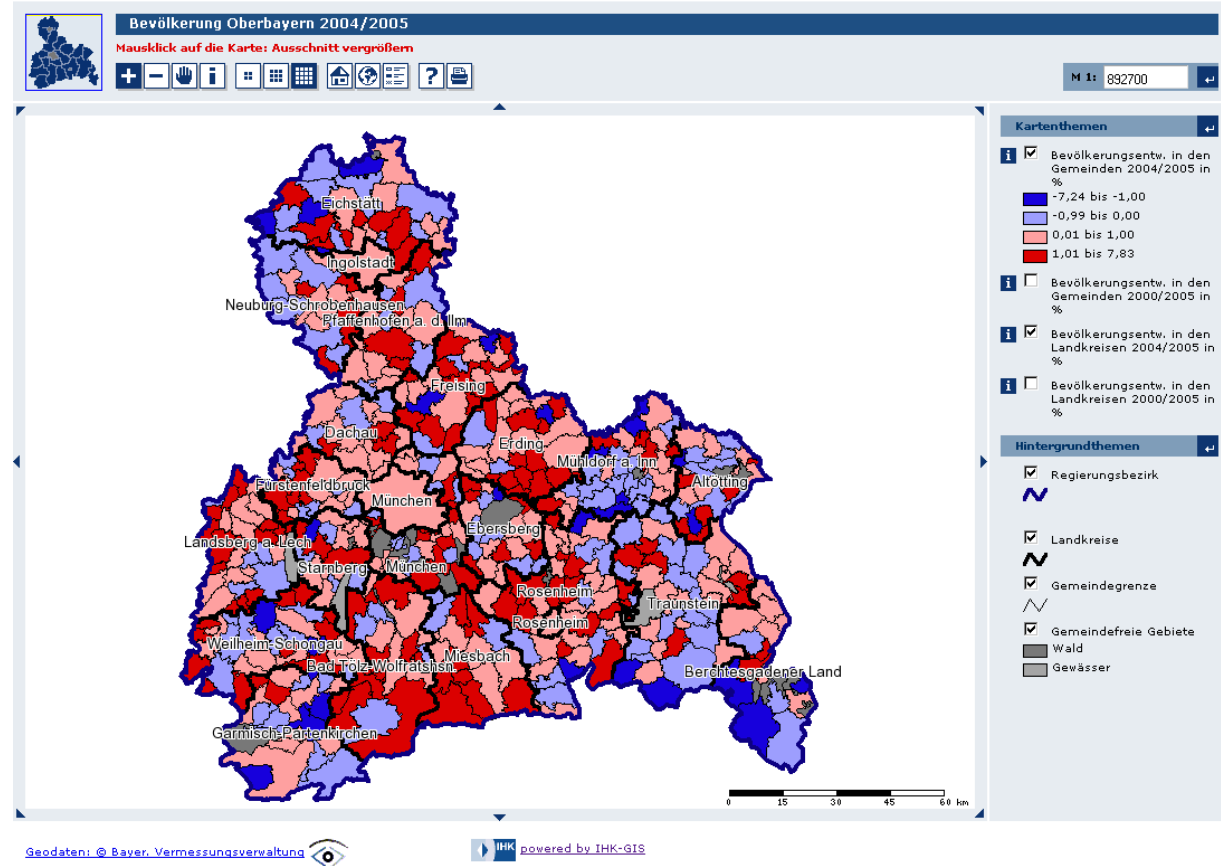
## ■ Service functions

- Site consultation
- Business and economic promotion



# GIS-Requirements from the point of eGovernment and the CCI

- Standardised and Modular
- Adaptable and Extendible
- Interoperable and Integrable
- Robust and High available

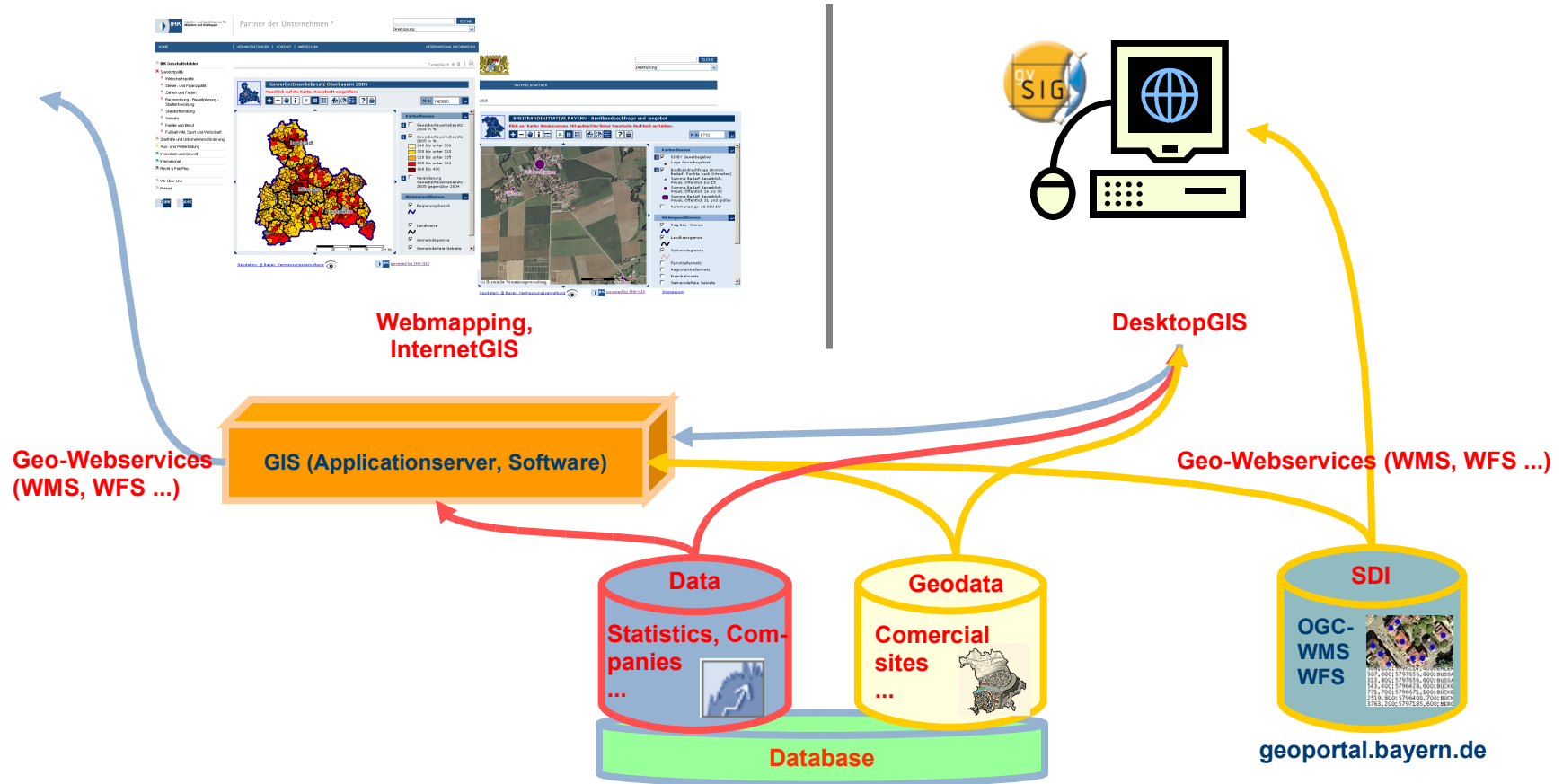


## Why OpenGIS at a CCI?

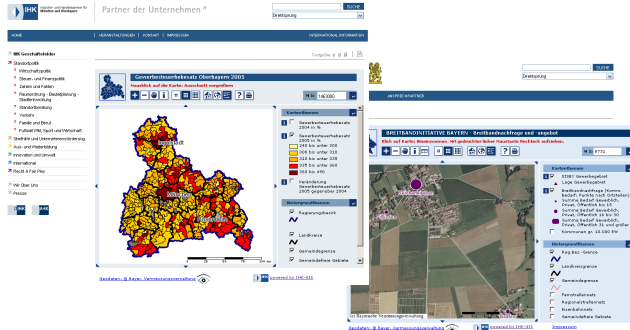
- OpenGIS made it affordable to implement GIS in the work process
- OpenGIS can be customised to specific IT-Architectures
- OpenGIS can be made to measure and is extensible for CCI specific work
- Open standards can reduce the dependencies to service firms and software
- Investment in know-how not only in licences



# What are the main fields in GIS at the CCI?



# Which functions for what topic and process in the CCI?



**Webmapping,  
InternetGIS**

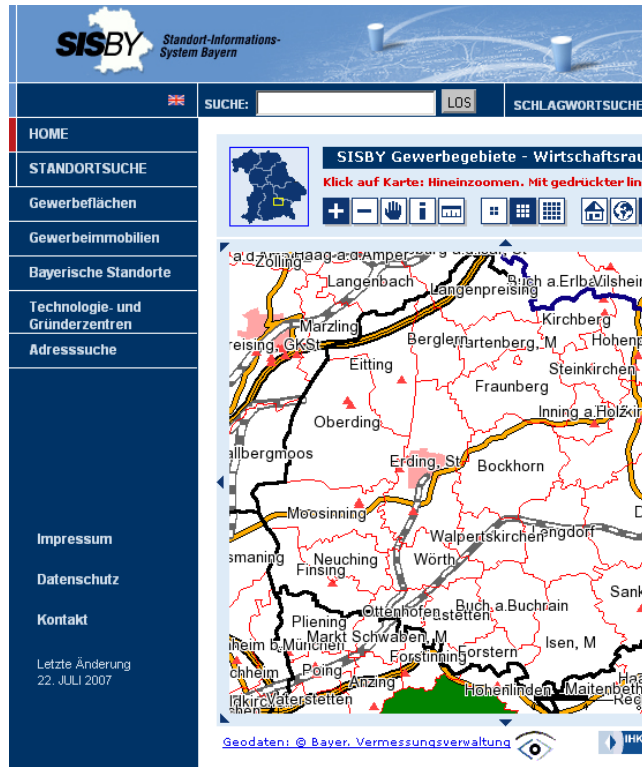


**DesktopGIS**

- Inter-, Intra- and Extranet
- Browser-based
- Tailored functions
- Focus on Viewing (Zoom, Pan, Info)
- „Mass maps“
- Presentation

- Intranet
- Java-based
- Functions variable, adoptable
- Full GIS Functions
- Complex, individual thematic maps
- Publish tool for InternetGIS

# InternetGIS – Multiuse of Geodata in different CCI Websites



**SISBY** Standort-Informations-System Bayern

SUCHE:  LOS SCHLAGWORTSUCHE

HOME

STANDORTSUCHE

Gewerbeflächen

Gewerbeimmobilien

Bayerische Standorte

Technologie- und Gründerzentren

Adressuche


Impressum

Datenschutz


Kontakt

Letzte Änderung 22. JULI 2007

Geodaten: © Bayer. Vermessungsverwaltung

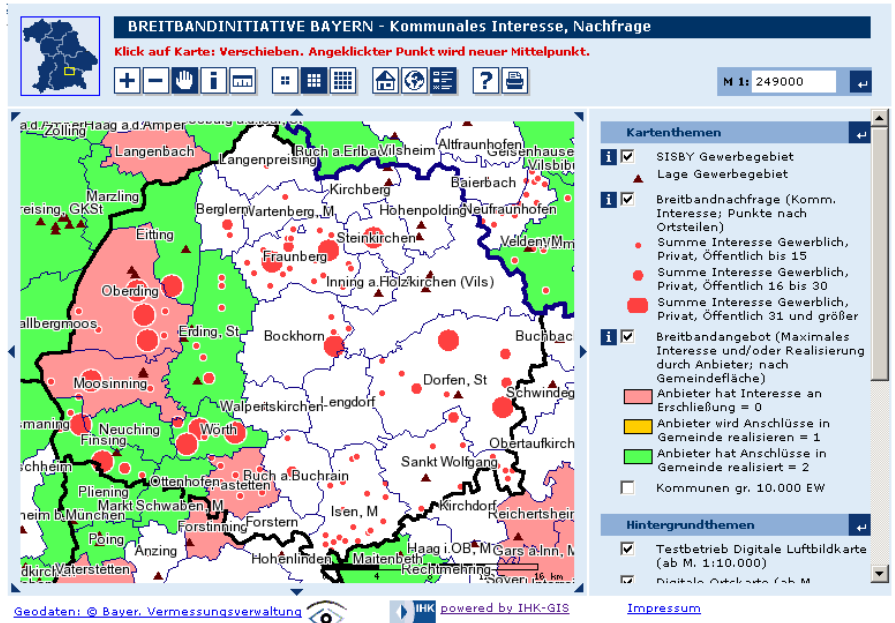


Bayerischer Industrie- und Handelskammertag BIKK



BREITBAND-INITIATIVE BAYERN

HOME IHK-ANSPRECHPARTNER KONTAKT IMPRESSUM



**BREITBANDINITIATIVE BAYERN - Kommunales Interesse, Nachfrage**

Klick auf Karte: Verschieben. Angeklickter Punkt wird neuer Mittelpunkt.

M 1: 249000

**Kartenthemen**

- ☒ SISBY Gewerbegebiet
- ☒ Lage Gewerbegebiet
- ☒ Breitbandnachfrage (Komm. Interesse; Punkte nach Ortsteilen)
  - Summe Interesse Gewerblich, Privat, Öffentlich bis 15
  - Summe Interesse Gewerblich, Privat, Öffentlich 16 bis 30
  - Summe Interesse Gewerblich, Privat, Öffentlich 31 und größer
- ☒ Breitbandangebot (Maximales Interesse und/oder Realisierung durch Anbieter; nach Gemeindefläche)
  - Anbieter hat Interesse an Erschließung = 0
  - Anbieter wird Anschlüsse in Gemeinde realisieren = 1
  - Anbieter hat Anschlüsse in Gemeinde realisiert = 2
  - Kommunen gr. 10.000 EW

**Hintergrundthemen**

- ☒ Testbetrieb Digitale Luftbildkarte (ab M. 1:10.000)
- ☒ Digitale Ortskarte (ab M. 1:10.000)


Geodaten: © Bayer. Vermessungsverwaltung

powered by IHK-GIS


Impressum

# InternetGIS – Multiuse of Geodata and WMS


**BREITBANDINITIA**  
Klick auf Karte: Verschieben



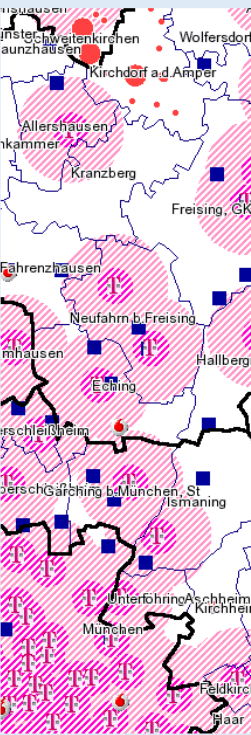
**BREITBANDINITIA**  
Klick auf Karte: Hineinzoomen




**SISBY DFK**  
Klick auf Karte: Hineinzoomen. Mit gedrückter linker Maustaste Rechteck aufziehen.




M 1: 2297




Geodaten: © Bayer. Vermessungsverwaltung




Geodaten: © Bayer. Vermessungsverwaltung



Geodaten: © Bayer. Vermessungsverwaltung



Geodaten: © Bayer. Vermessungsverwaltung



Geodaten: © Bayer. Vermessungsverwaltung

**Kartenthemen**

- ☒ SISBY Gewerbegebiet
- ☐ Breitbandnachfrage (Komm. Interesse; Punkte nach Ortsteilen)
- ☐ GE und GI nach ATKIS
- ☒ WMS GI GE
- ☐ Kommunen gr. 10.000 EW

**Hintergrundthemen**

- ☒ Testbetrieb Digitale Flurkarte
- ☐ Testbetrieb Digitale Luftbildkarte (ab M. 1:10.000)
- ☐ Digitale Ortskarte (ab M. 1:10.000)
- ☒ Topografische Karte (ab M. 1:50.000 bis M. 1:10.000)
- ☒ Reg. Bez. -Grenze
- ☒ Landkreisgrenze
- ☒ Gemeindegrenze
- ☐ Fernstraßennetz
- ☐ Regionalstraßennetz
- ☐ Eisenbahnnetz
- ☐ Gemeindefreie Gebiete

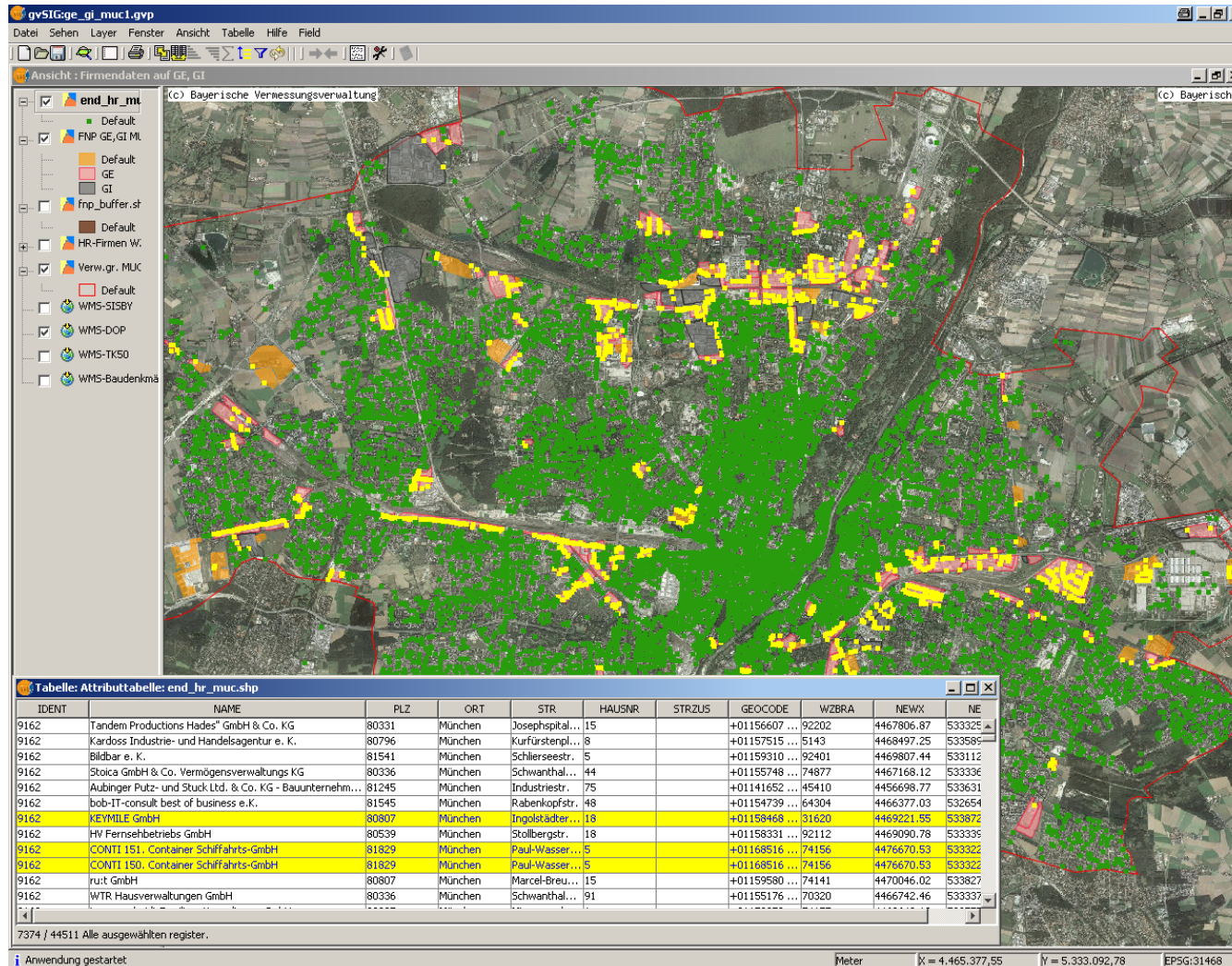
Abfrageergebnis anzeigen ☐ In eigenem Fenster

Geodaten: © Bayer. Vermessungsverwaltung

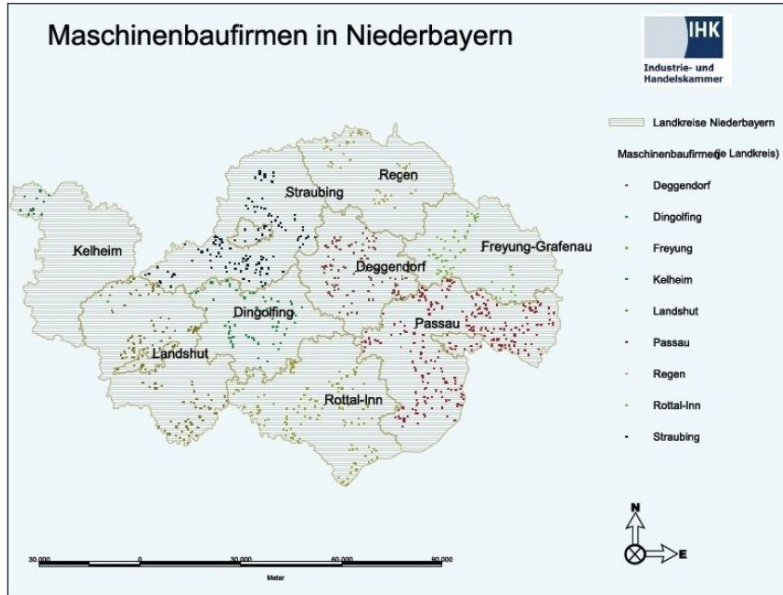
powered by IHK-GIS

Impressum

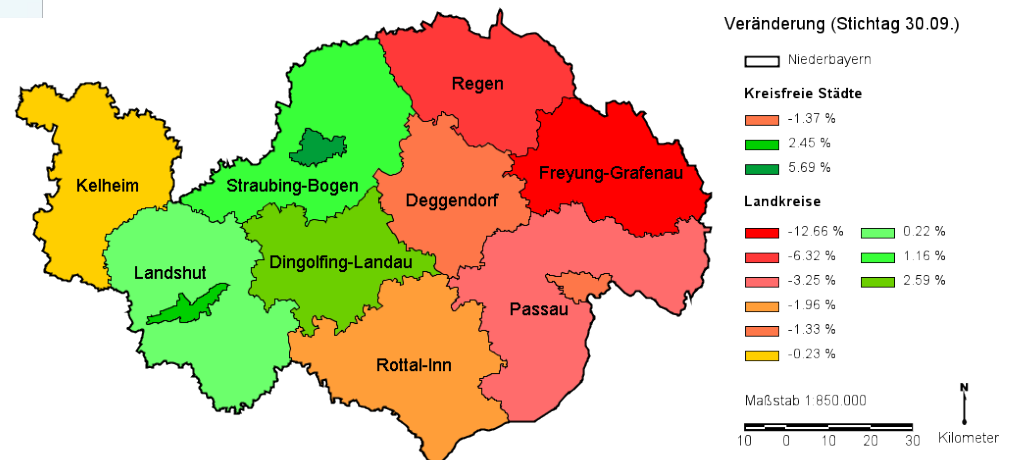
# DesktopGIS GVSig – Companies in Munich



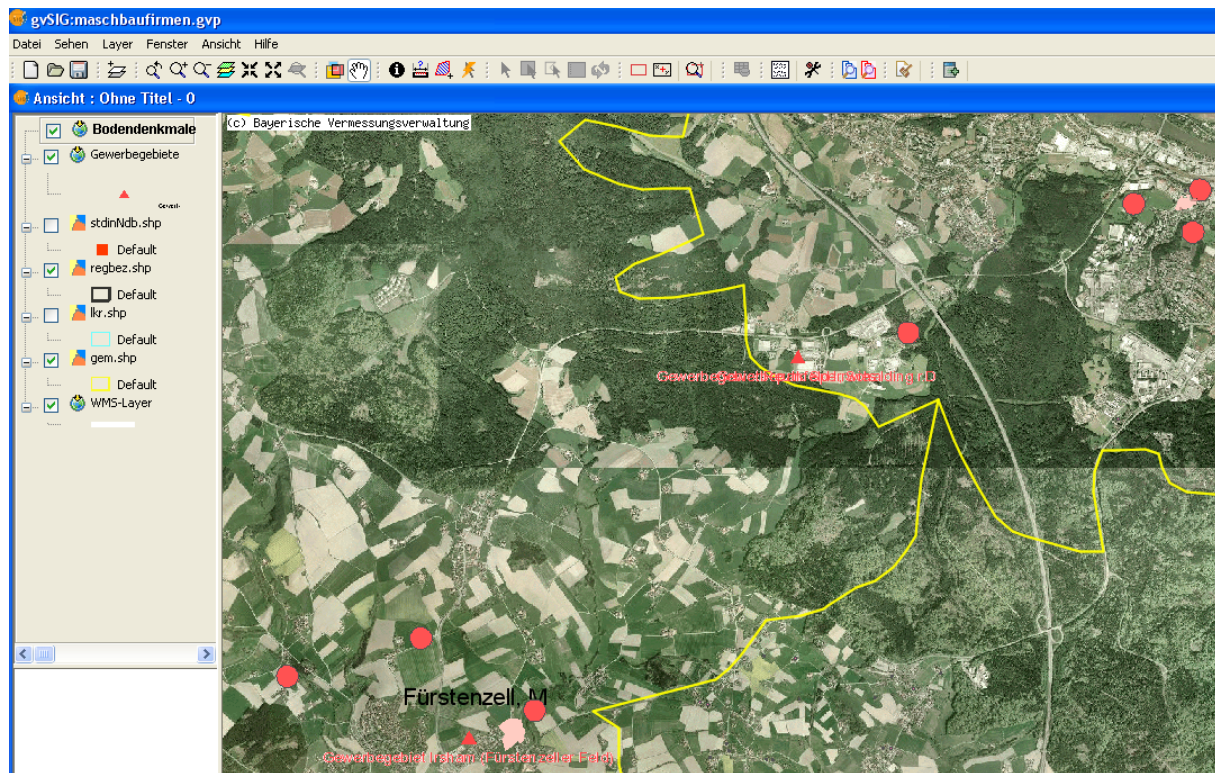
# DesktopGIS GVSig – Thematic maps Lower Bavaria



Veränderung der sozialversicherungspflichtigen Beschäftigten in Niederbayern



# Visualization and Request (WMS, WCS und WFS), Search (Catalog Service) und Localization (Gazetteer) of Geodata

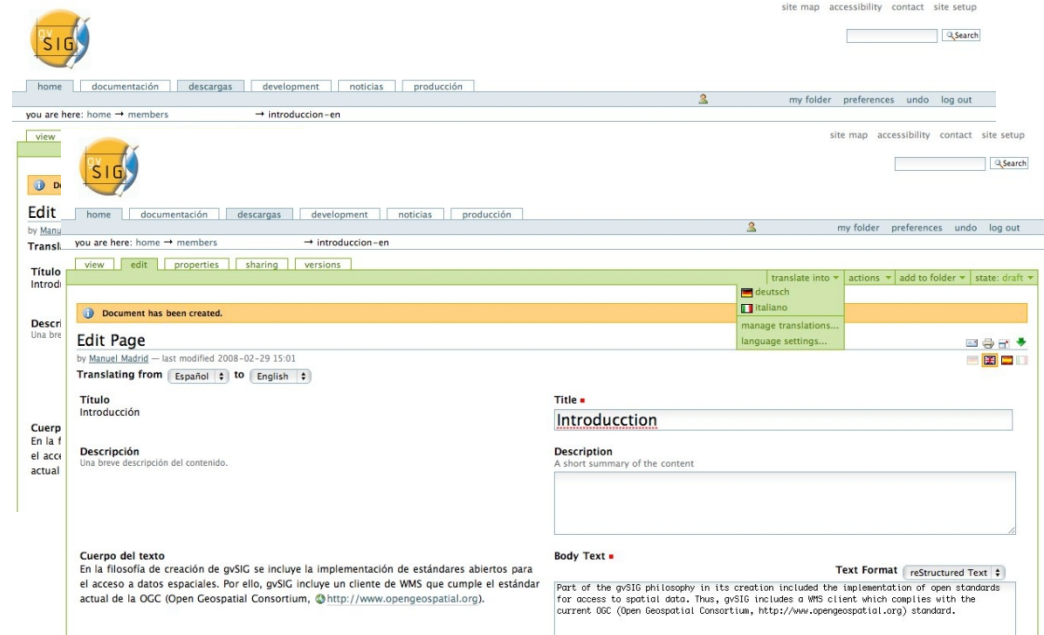


## SDI Bavaria:

- Digital Orthophoto (Bayerische Vermessungsverwaltung )
- Commercial Sites (CCI)
- POIs (Bayerisches Landesamt für Denkmalpflege)
- Protected areas , ...

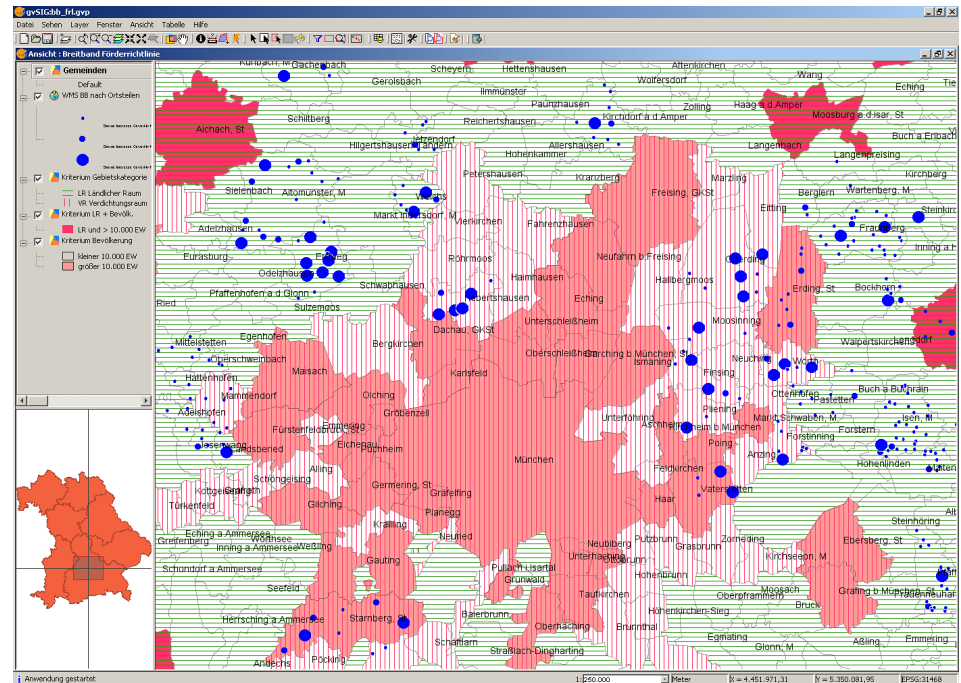
## DesktopGIS gvSig – ...

- 2007 – First tests and singular PC-Installation at the CCI Munich
- 2008: Further tests and integration into the Software-Distribution at the CCI Munich
  - Next CCI „on board“ course at the CCI Passau Lower Bavaria
- Bugs and Userproblems were fixed by the german community and spanish developers
- Version 1.1.2 fully translated by the german community
- gvSIG goes international: Web-Portal for multi-translation
- First gvSIG Guidebook in german (> 400 pages)



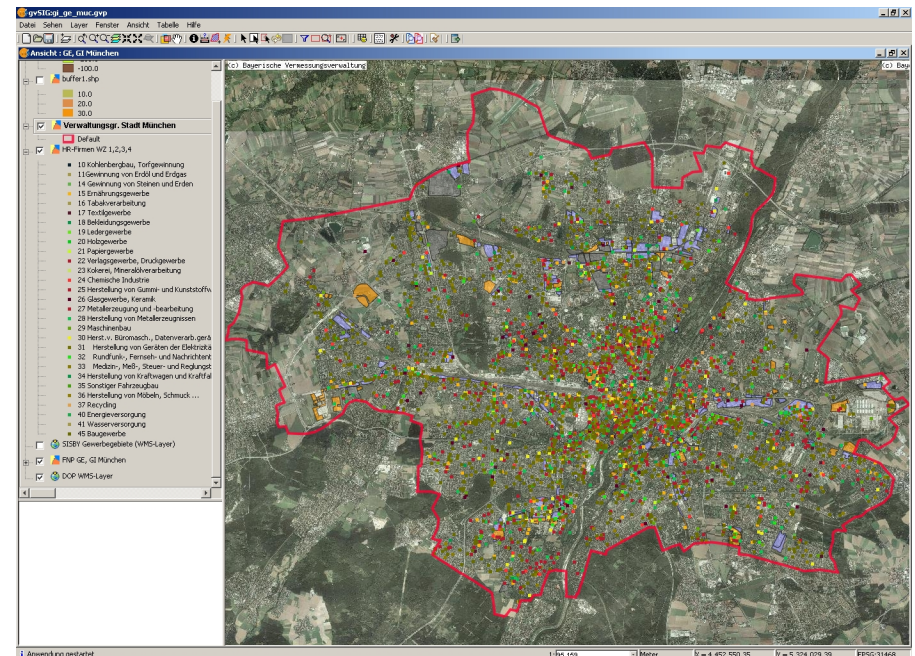
## DesktopGIS gvSig – Our wishes ...

- Professional Support in Germany
- Import and Export of Excel-sheets
- Diagramas ...
- Integration of tables in the layout
- Export of Layout in PNG
- Relative directory path for project



## DesktopGIS gvSig – Our contribution ...

- Kick-off – E-Government Project for **all** german CCIs for SDI and SDI-Components
- Further integration of GVSig at the CCIs in Bavaria
- Software development for the demands of the CCI Munich
- Support for a first german GVSig User-Conference in Munich



---

# OpenGIS: Contact at the CCI Munich

## Andreas Fritzsche



Industrie- und Handelskammer für  
München und Oberbayern

Unit: Site Consultation, Statistics, Spatial and Town Planning  
Dep. Economics, Industry, Trade, Services  
[fritzsche@muenchen.ihk.de](mailto:fritzsche@muenchen.ihk.de)  
Fon ++ 49.89.5116.785

Thank you for your attention!