



gvSIG

the free GNU/GPL-licensed Geographic Information System
of the Generalitat de la Comunitat Valenciana



PROJECT PART-FINANCED
BY THE EUROPEAN UNION
EUROPEAN REGIONAL
DEVELOPMENT FUND
"A way to build Europe"

gvSIG is a **desktop tool oriented to manage geographic information**. It is characterized by a user-friendly interface, with a quick access to the most usual raster and vector formats. In the same view it includes local files as well as remote data through SDI standards, geographic databases, etc.

gvSIG can perform many different kinds of analysis with raster and vector data and with the addition of the SEXTANTE project, gvSIG gets as a really powerful and easily extensible geographic analysis framework.

gvSIG can also create layouts for maps and reports with the most common elements such as north arrows, scales and so on.

Formats supported in reading mode:

- Vector data: shp, gml, kml, dgn v7, dxf, dwg (2004, 2000, R14, R13 and R12)
- Raster: ecw, tiff, jpg, png, gif, MrSID, img, jpeg2000, bmp, dat (Envi), lan, gis, img (Erdas), pix, aux, (PCI Geomatics), adf (ESRI), mpr, mpl (Ilwis), map (PC Raster), asc

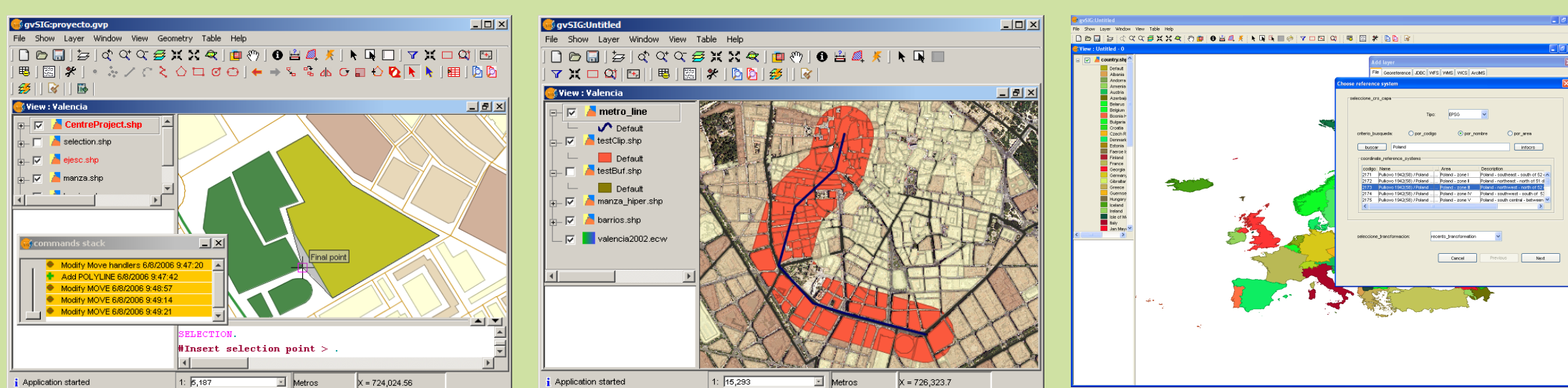
Formats supported in writing mode

- Vector data: shp, gml, kml, dxf, Postgis, Oracle Locator
- Raster: GeoTIFF, ECW (only in Linux kernel 2.4), JPEG, JPEG2000

Main characteristics

- Development language: Java
- Multiplatform: Windows, Linux, Mac
- Adheres to the guidelines of the European Union - Inspire.
- Free license (GNU/GPL).
- Modular, scalable, powerful.
- Simple interface: user friendly.
- International (Spanish, Valencian, English (UK), English (USA), Basque, Gallego, French, Italian, Portuguese (PT), Portuguese (BR), German, Czech, Polish, Romanian, Russian, Greek, Serbian, Swahili, Turkish and Mandarin).

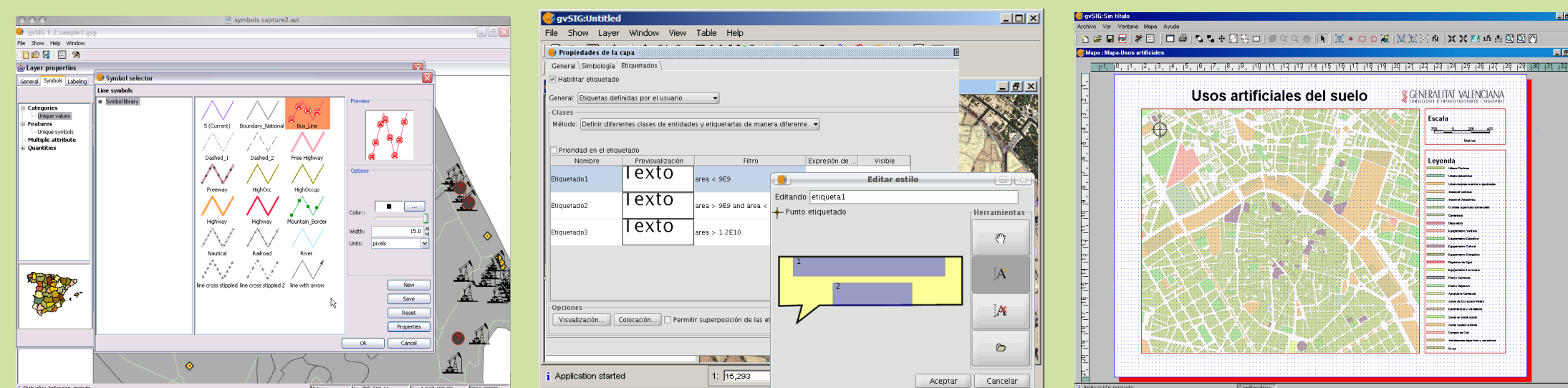
GIS Client



Edition

Geoprocessing

Reprojection



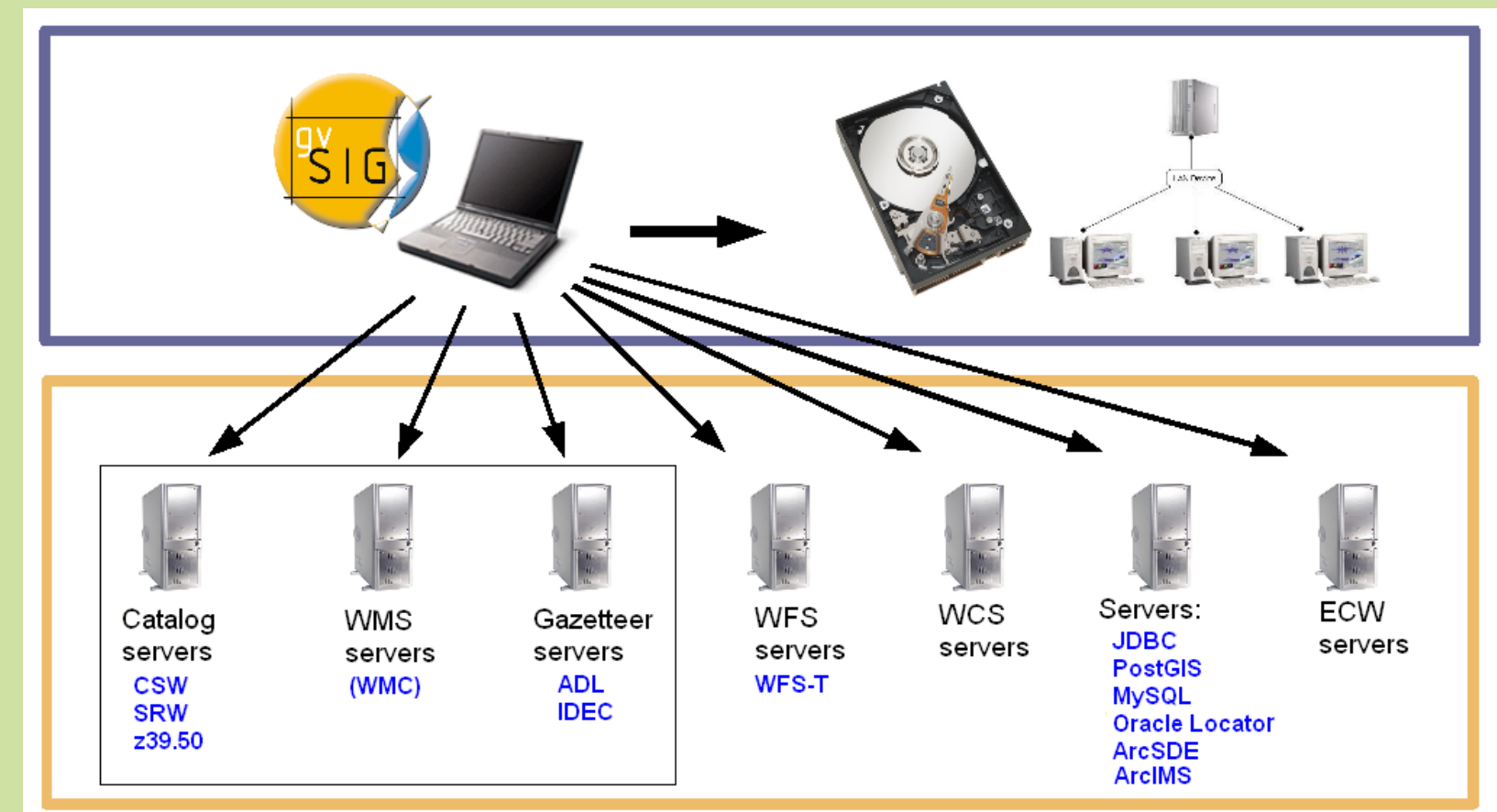
Advanced symbology

Advanced labelling

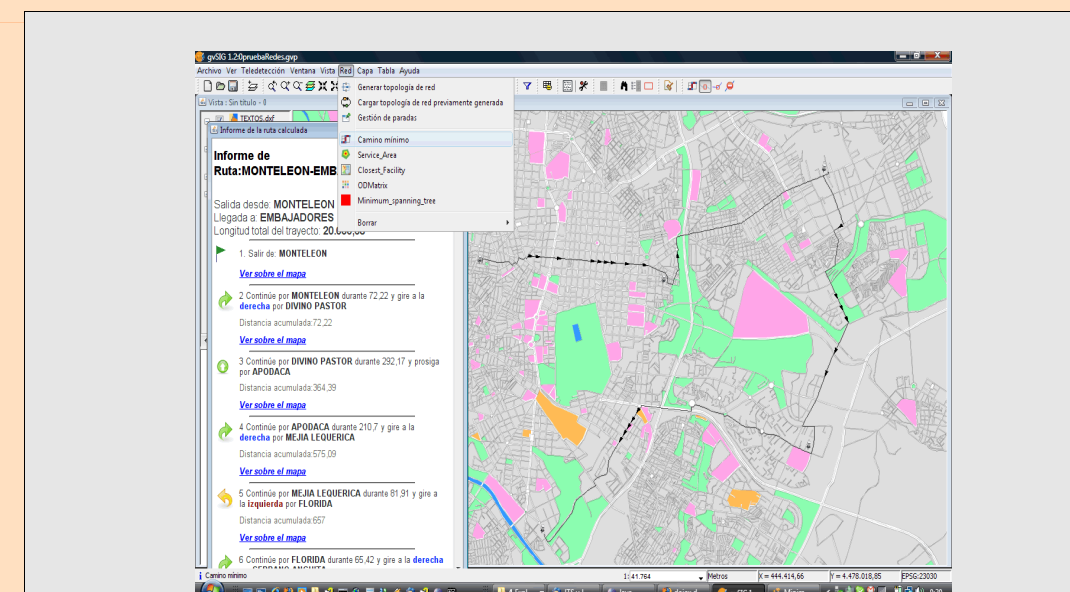
Map constructor

SDI Client

- Display and query services (WMS, WCS, WFS and WFS-T servers)
- Searching services (Catalogue client)
- Location services (Gazetteer client)



Advanced functionalities



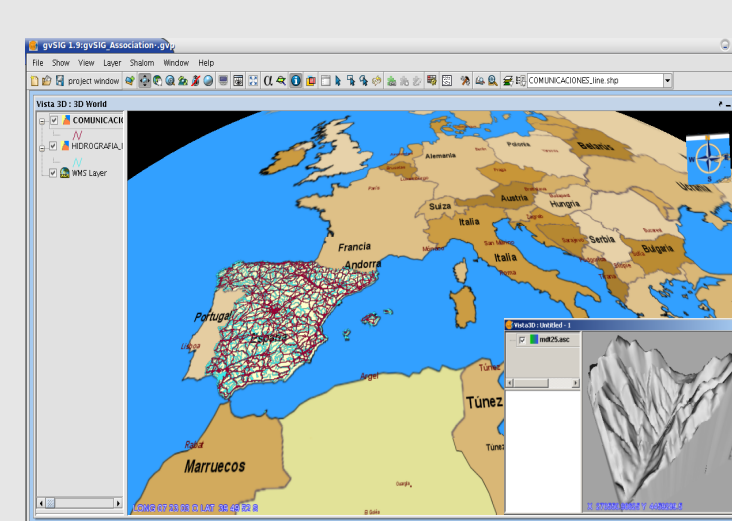
Network pilot

Optimal path calculation, topology, more geoprocessing...



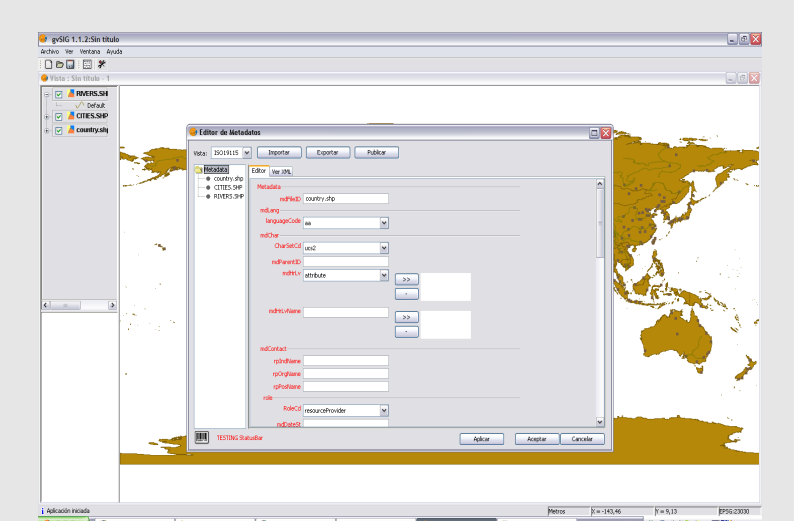
Mobile devices

Integration of gvSIG into mobile devices: telephony, PDA...



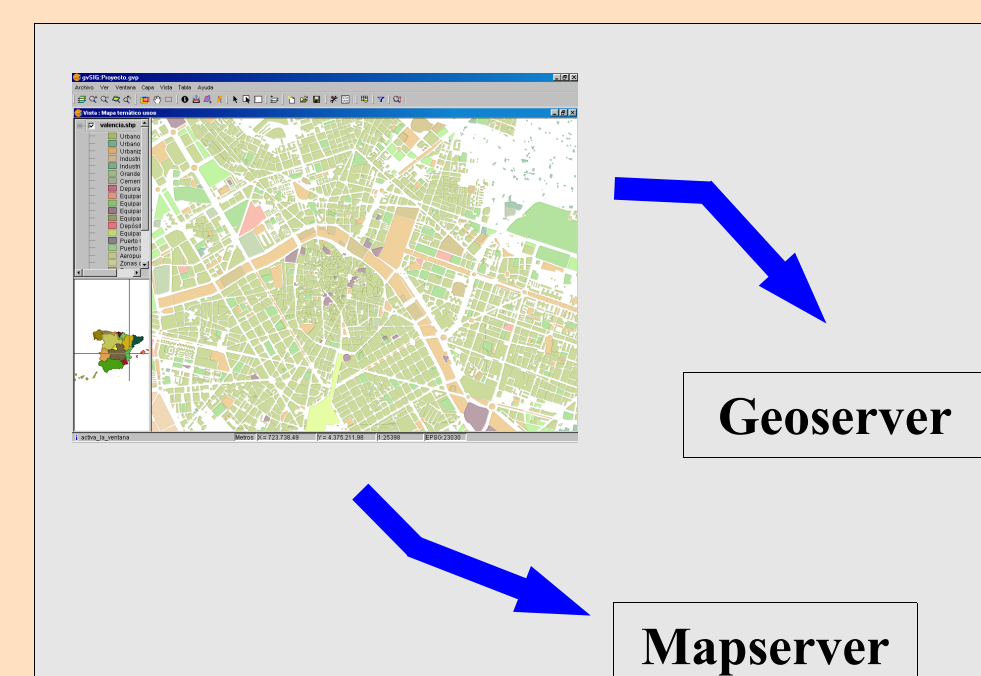
3D

3D viewing and labelling, navigation tools...



Metadata

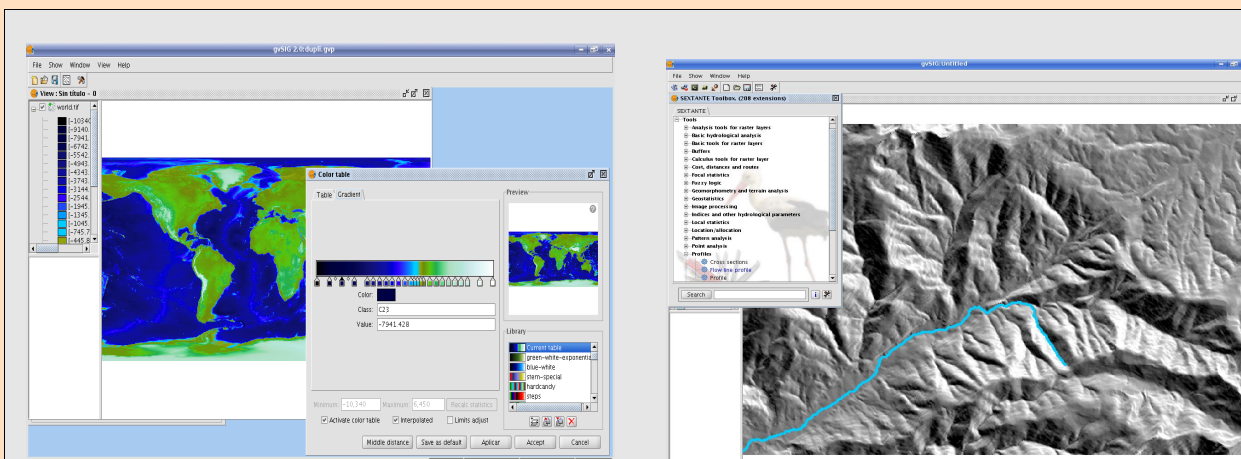
Automatic extraction, edition, and metadata publishing



Geoserver

Mapserver

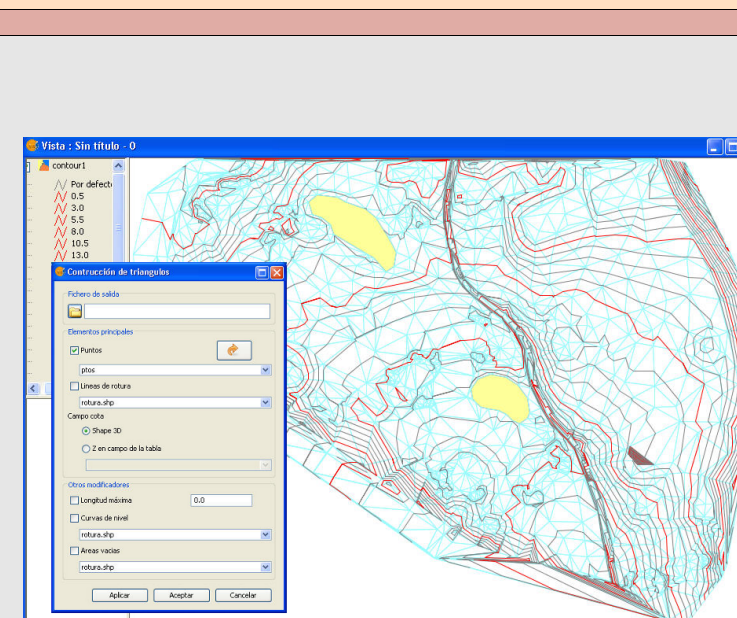
Publishing extension



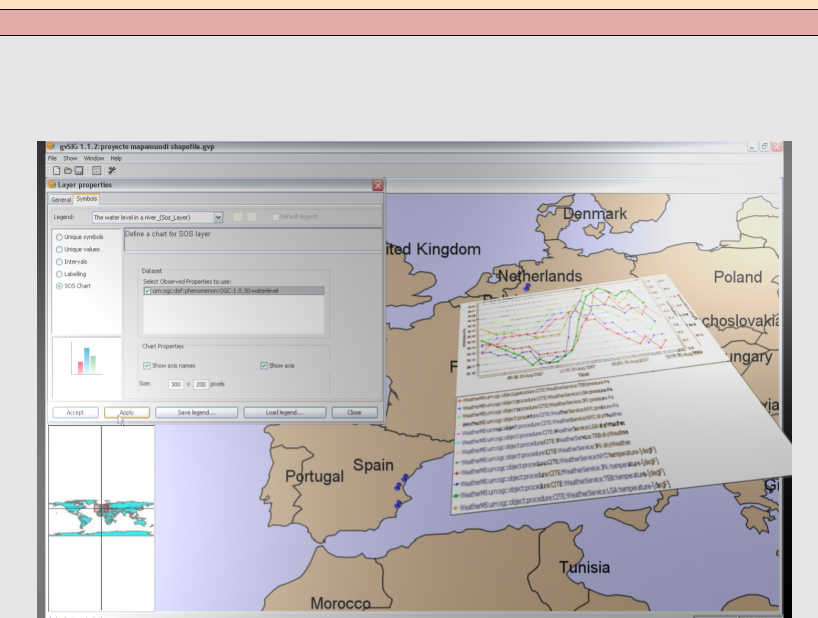
Raster pilot

Georeferencing, Histogram view, image transparency, bright and contrast...

+ SEXTANTE proj.
Functions oriented to geographical analysis and hydrology field...
(<http://www.sextantegis.com>)



Civil Engineering



Sensors