

A public transport GIS for the Algerian Departement of Transportation.

Context and objectives

Context of the project :

- ▶ Updating and easing organization of bus service network in 13 Algerian cities.



The GIS features, designed for the non-specialists :

- ▶ Mapping of the bus network and map production (`.pdf`)
- ▶ Network update (bus line drawing, bus stop positioning)
- ▶ Running bus network socio-economic impact analysis



Main features

A CUSTOMIZED INTERFACE FOR NON GIS SPECIALISTS

- ▶ Devoted menu and context menu : extension packaging.
- ▶ Simplification of the graph data capture : less geometric edition tools and nodes modifying tools merged.
- ▶ Information form easily readable and editable for each object : use of the navTable plug-in (list box, colour code).
- ▶ Automatic synchronisation of lines and stations : snapping and nearest point analysis.

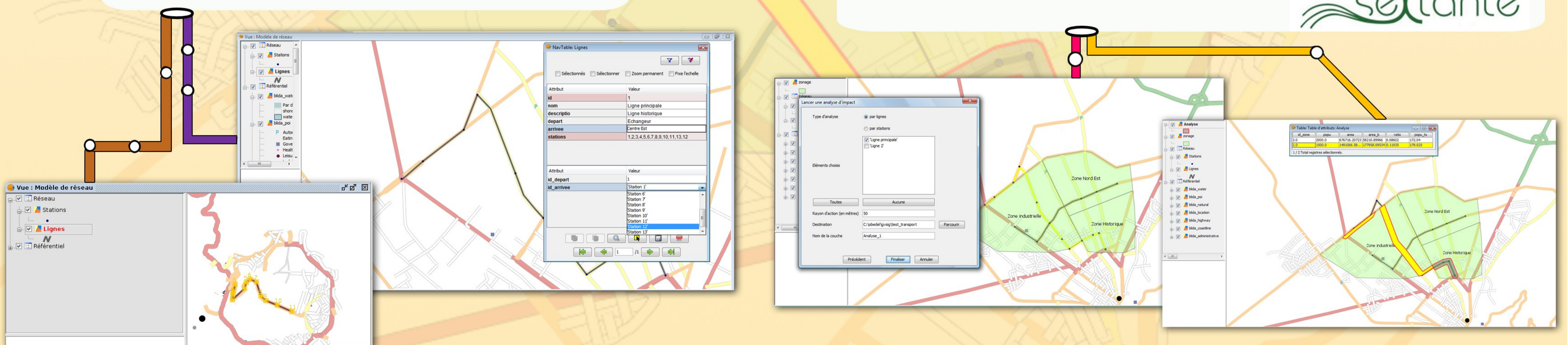
CREATE THE NETWORK

It's possible to create and modify the network thanks to the digitalisation of bus lines and bus stops and to do filling of information form.

ANALYSE THE IMPACT

It gives an estimation of the bus network socio-economic impact thanks to a range of influence computed around lines and stations.

powered by

Olivier BEDEL - François LEPRINCE

Phone : 00332 99 222 570 - Fax : 00332 99 321 276 - Email : alkante@alkante.com

