

## Summary

The project has been developed with **Free Software**.

**Server side:** Mapserver , Geoserver and TileCache, following the recommendations of OGC (Open Geospatial Consortium).

**Data:** PostgreSQL + PostGIS 7 database, and the graph is generated from GTFS files supplied by EMT (buses) and Metro.

**Routing service:** Based in OpenTripPlanner project.

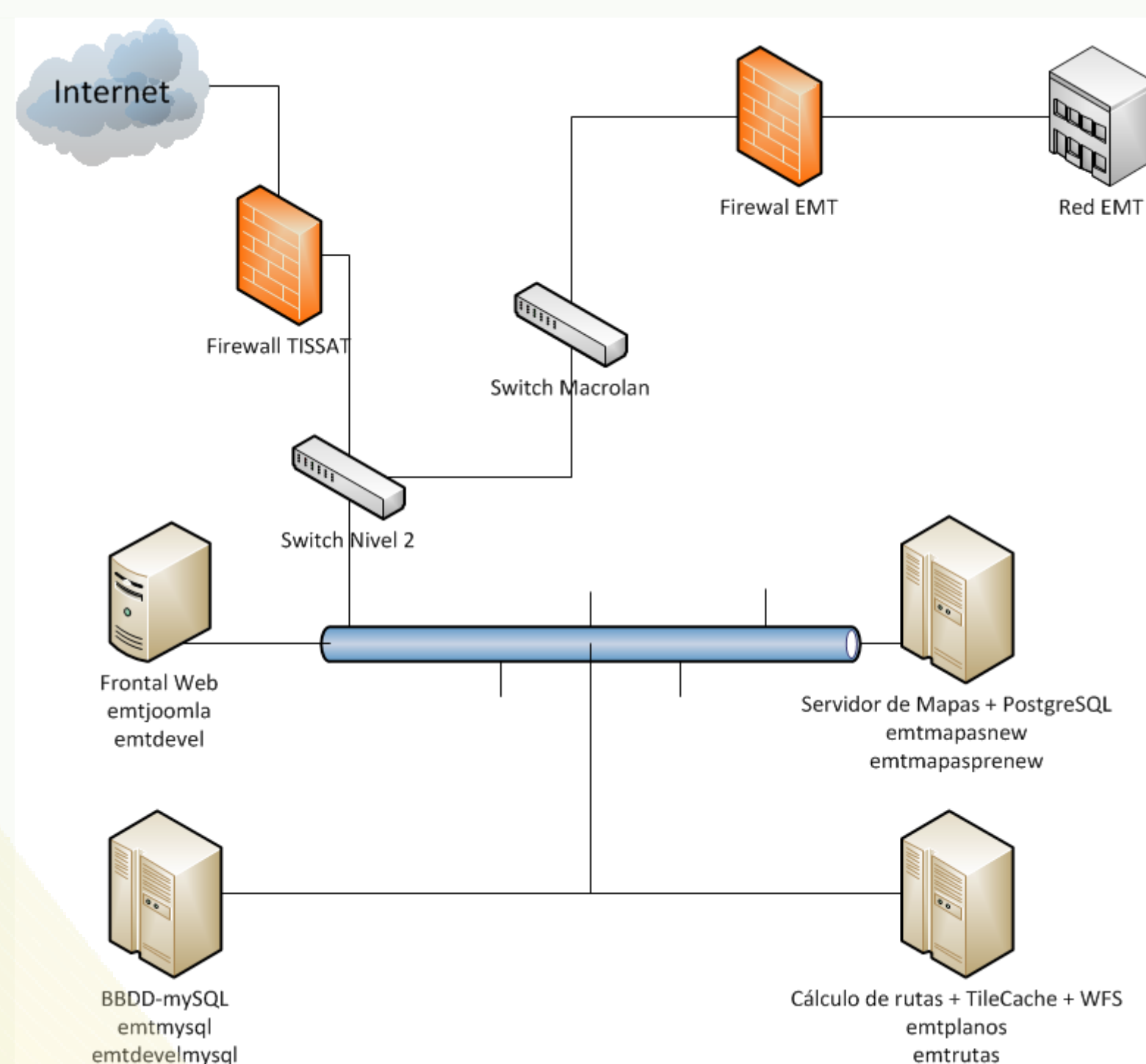
**Client side:** ExtJS + OpenLayers.

**Other:** gvSIG (check topology and incorporate data).

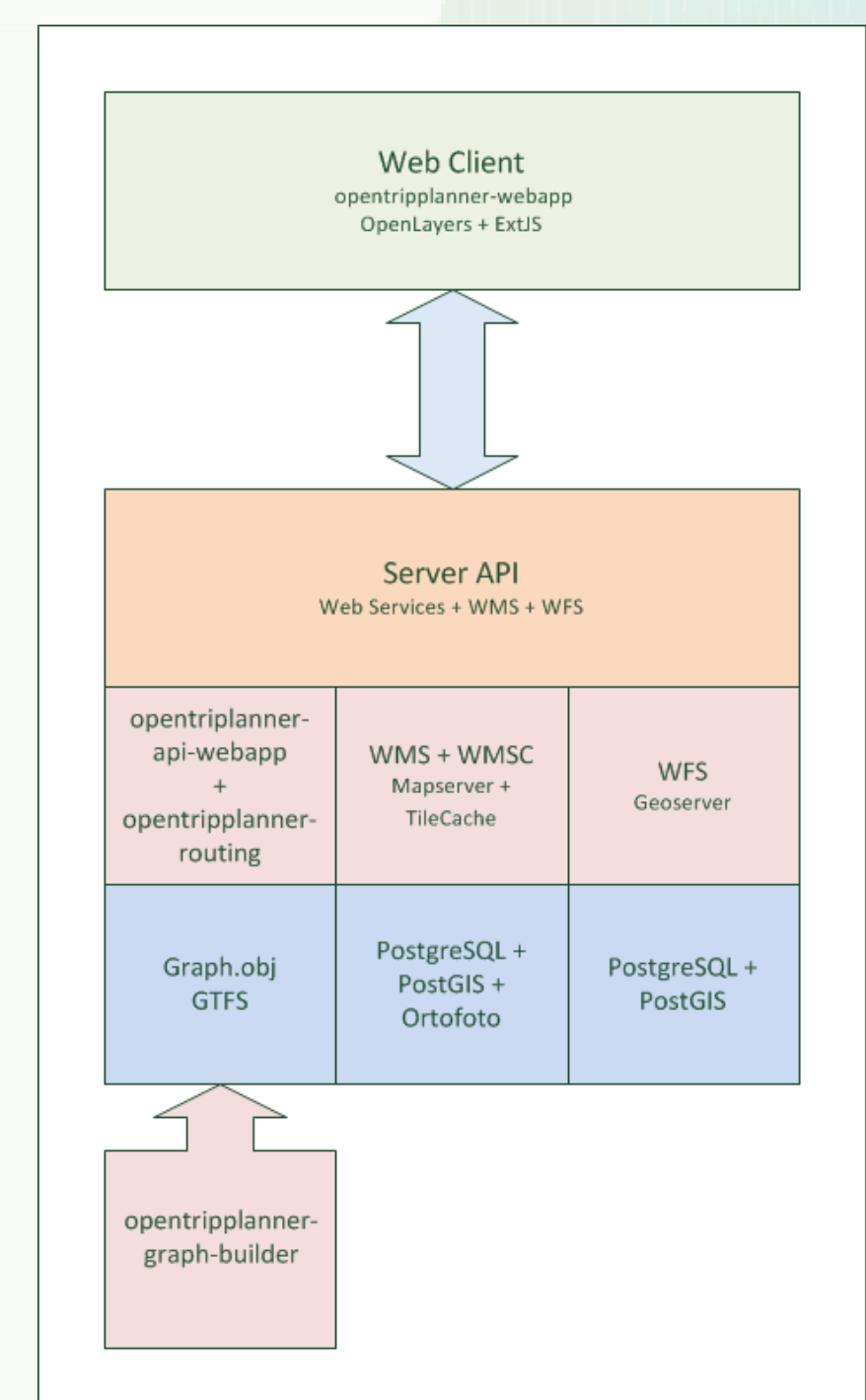
## Main characteristics

- Multimodal trip planner, offering several alternatives.
- Real time information
- Multi language
- Printing capabilities
- Added information (timetables, points of interest, nearest points, etc)
- Integration with OGC Services (the background map is a WMS service, and the bus lines and points of interest and stops come from a WFS service).

## Architecture

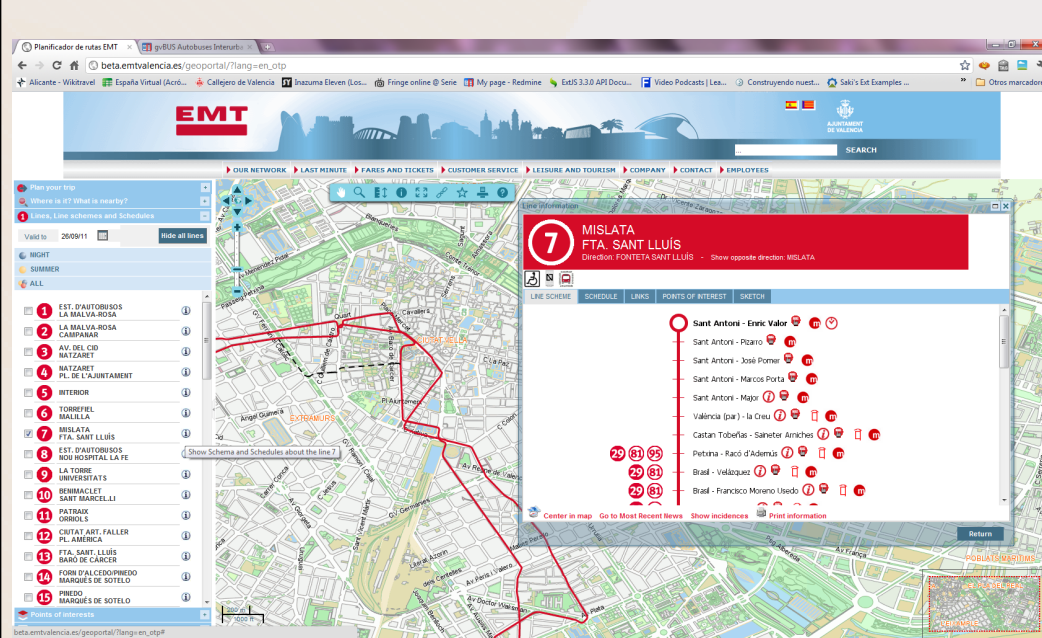


## Dataflow



## Advanced functionalities

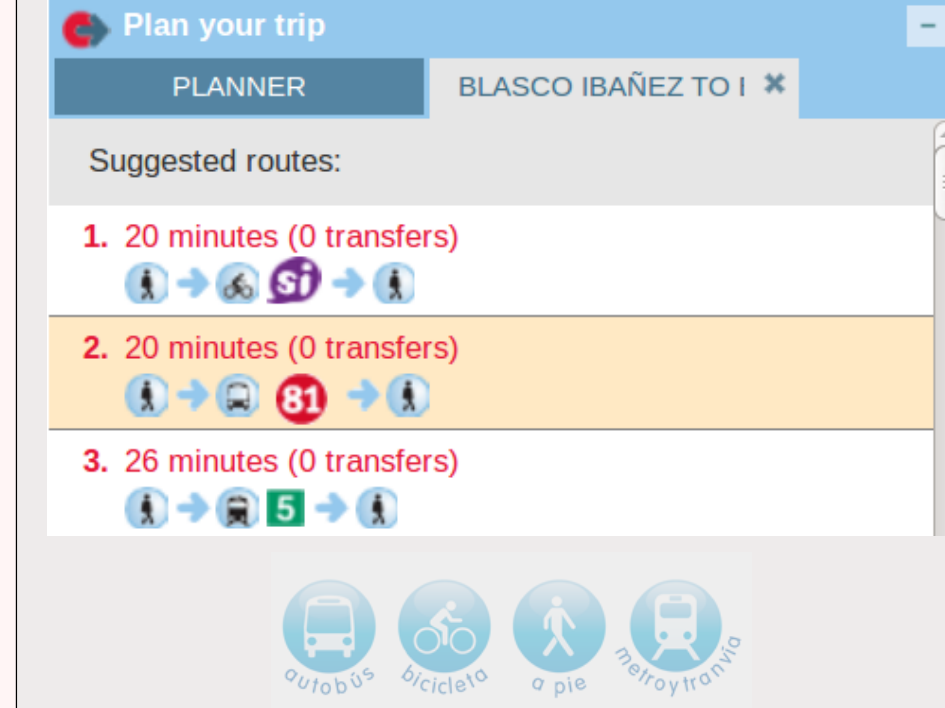
### Modern interface



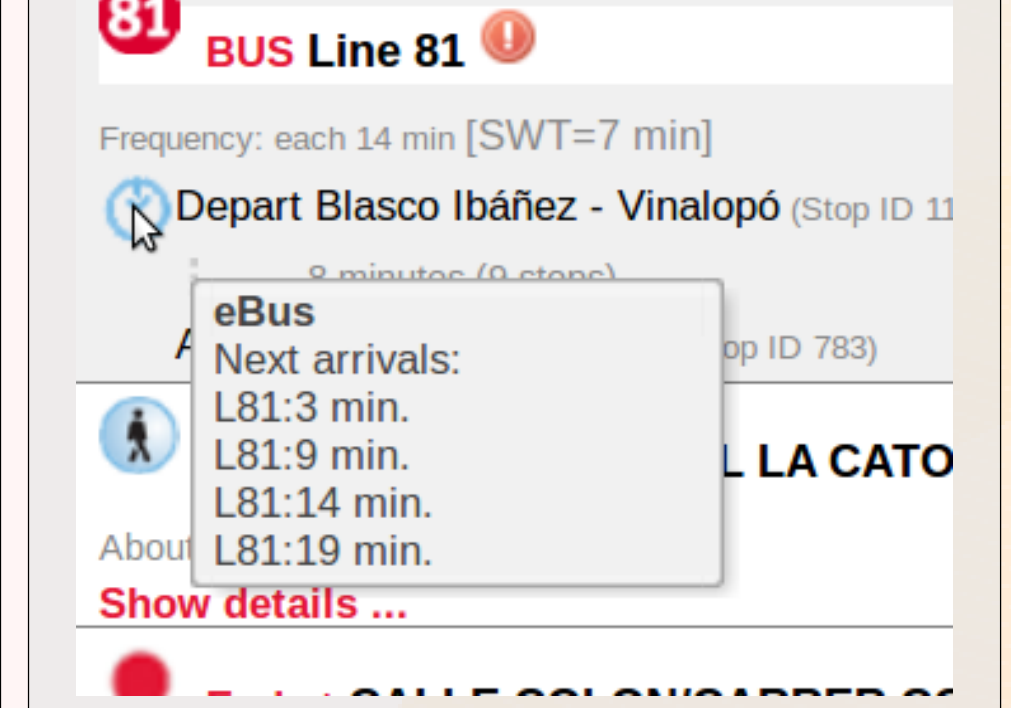
### Mobile devices



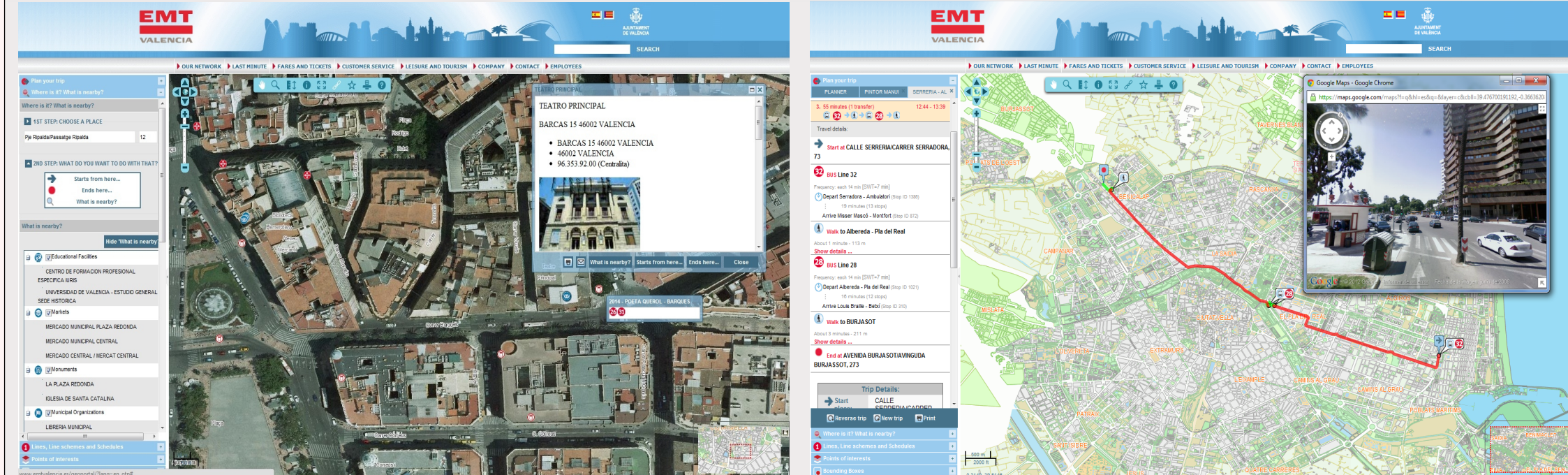
### Multimodal



### Real Time



### Fast and powerful



### More Information

