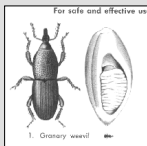


Bringing GIS to the masses using gvSIG

The use of free and open source GIS in community outreach UNH Cooperative Extension

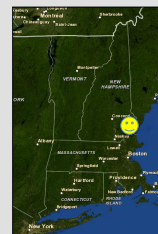
Cooperative Extension across USA

- > Exists in every state in the United States
- > Outreach component of "Land Grant" Schools tasked with bringing university to the people
- > Traditionally based on agriculture, but topics have changed with emerging needs
- > Different areas based on state needs/funding



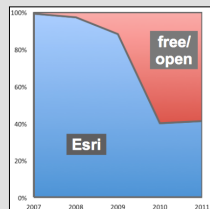
UNH Cooperative Extension GIS/GPS

- > University of New Hampshire (Durham, NH)
- > Housed in Natural Resources program team
- > Started 1998 using ArcView 3.x (now 10.1)
- > Laptop teaching cluster starting in 2000
- > Original focus on natural resource professionals, teachers, planning boards



Shift to emphasis on free/open

- > GIS is too expensive! (boring & limiting idea)
- > Some schools are Mac only
- > Towns, businesses concerned about licensing
- > Needed a way to get people started with GIS



Open/free focused workshops

GIS on Pennies a Day - December 2007 to January 2010

1 day: GIS basics, tour of free GIS options, hands on with online mapping, Google Earth
14 workshops | 127 participants

GIS 101: Learning to map in the digital age - March 2010 to present

3 hrs: GIS basics, tour of online mapping, free GIS options, Google Earth
15 workshops | 153 participants

GIS on Pennies a Day: Test Drive - January 2010 to present

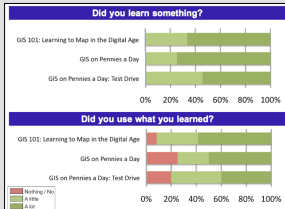
3 hrs: GIS key concepts, hands-on with free GIS
17 workshops | 168 participants

Workshop audience & impact

typical participants

Education	Private
Antioch University New England	Archives
Hinsdale Middle School (NH)	Brickstone Land Use Consultants, LLC
Keene State Regional Middle School (NH)	Cam Research Lab, Inc.
Lebanon Regional School (VT)	Geologic, Inc.
Union Regional School (VT)	Geospatial Environmental Management
Plymouth State University	Independent Archaeological Consulting, LLC
South Maine Laboratory	Rob Wildlife Consulting
The Putney School (VT)	New England Forestry Consultants
University of New Hampshire	Paul Kierling Consulting
Government	Seventh Generation Forestry
Greenham Conservation Commission (NH)	Tobias Dorman Landscape Architect, LLC
Haverhill Water Department (NH)	Vander-Heyden Land Surveying
Nonprofit	
Holderness Conservation Commission (NH)	
Pelham Forestry Commission (NH)	
Salisbury Conservation Commission (VT)	
Environmental	
NH Department of Environmental Services	
Society for the Protection of NH Forests	
Square Lake Association	
Town of Lamontville (MA)	
Town of Hooksett (NH)	
Unity Historical Society (NH)	
UNH Coastal Response Research Center	

workshop outcomes



Other venues for open source GIS

more mind reach

geospatial technology | extension.org

bit.ly/Map-A-Syst

Collaborative team providing research-based content and individual assistance on geospatial technologies

UNH Cooperative Extension

GIS on Pennies a Day: Test Drive - gvSIG

GIS on Pennies a Day: Test Drive - MapWindow

gisworkshops.org

GIS and GPS training materials available for free download to help people learn on their own schedule

Lake Basin Action Network

lakebasin.org

International hands-on in-person training for lake watershed and managers using geospatial technologies



Shane Bradt | Extension Specialist in Geospatial Technologies | UNH Cooperative Extension

shane.brادت@unh.edu | 1-603-862-4277 | <http://gisworkshops.org> | <http://twitter.com/gisworkshops> | <http://facebook.com/gisworkshops>